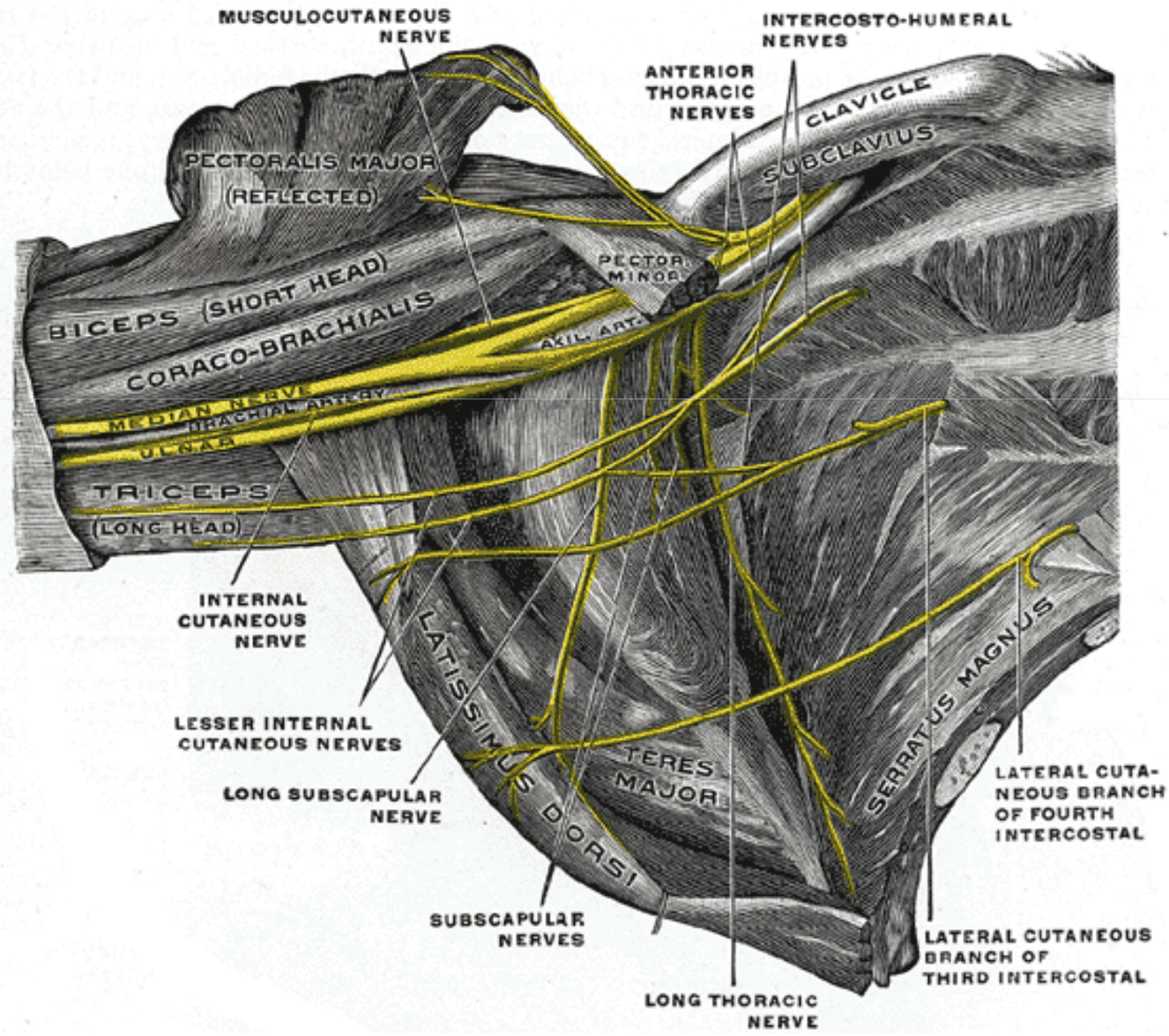


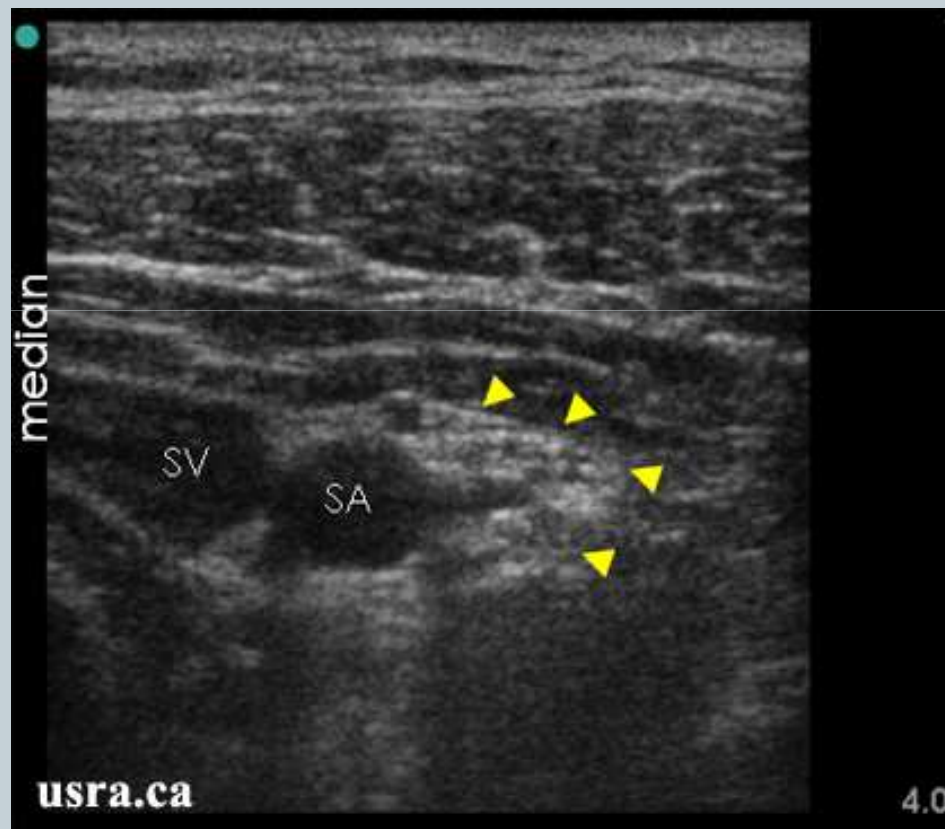
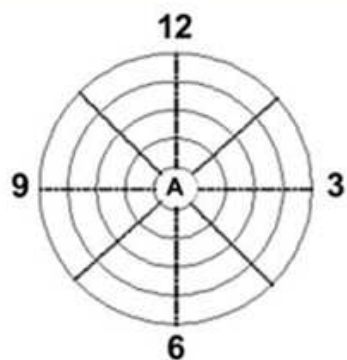
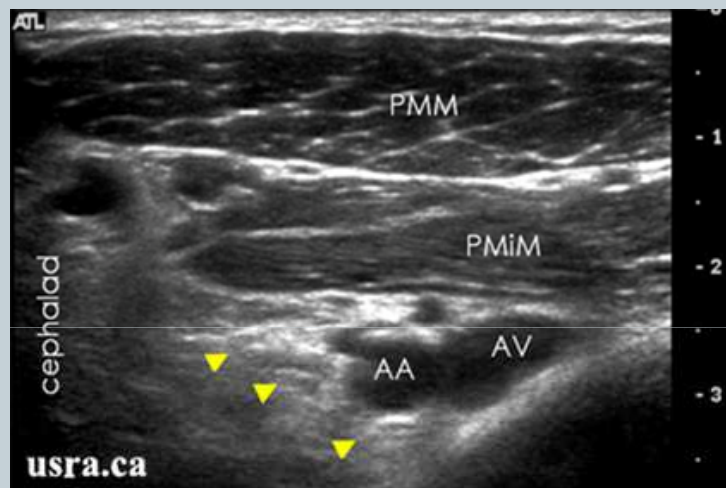
Ultrazvuková anatomie brachiálního plexu infraklavikulárně



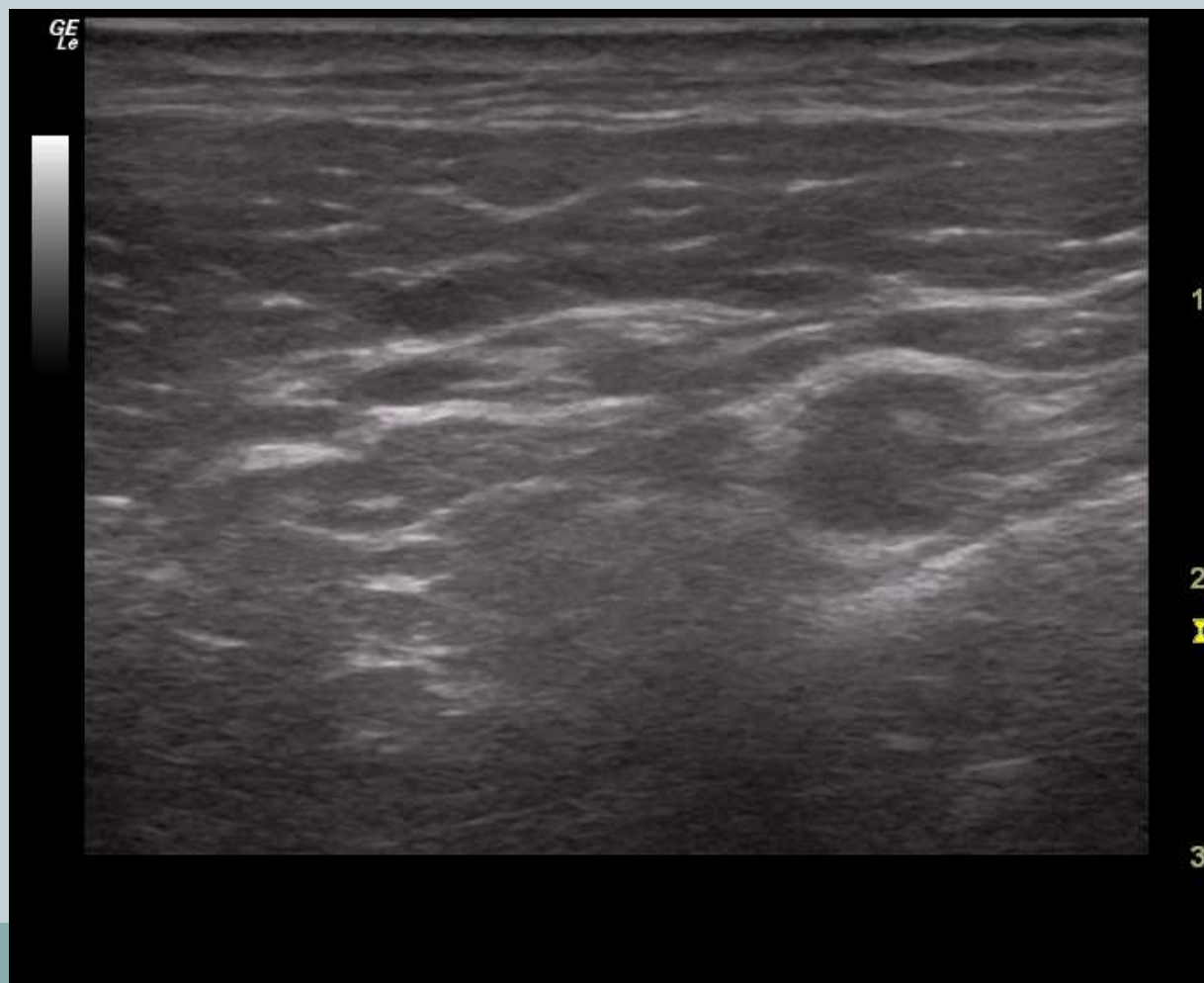
MILAN JELÍNEK
BRNO



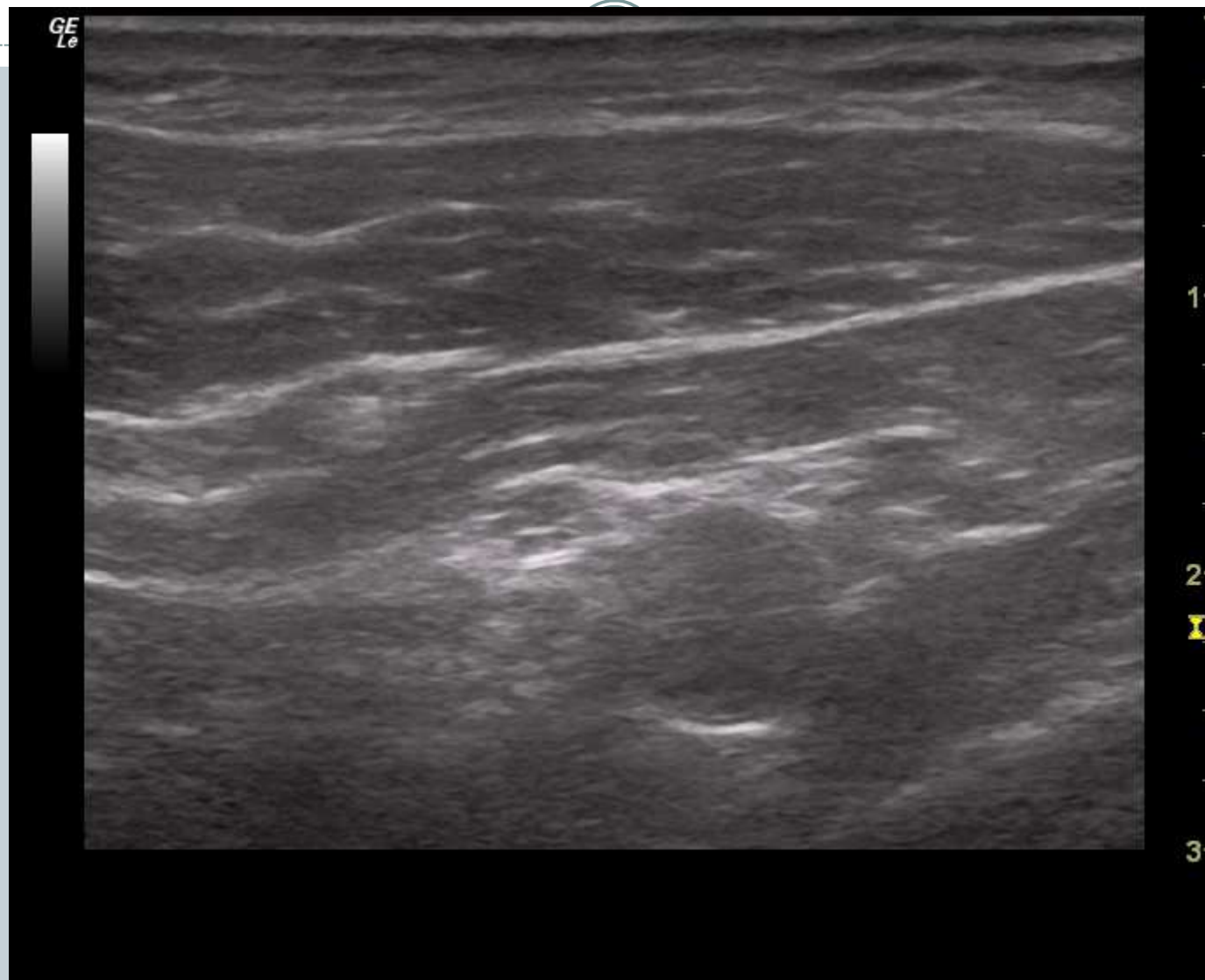
Infraklavikulární blok-UZ



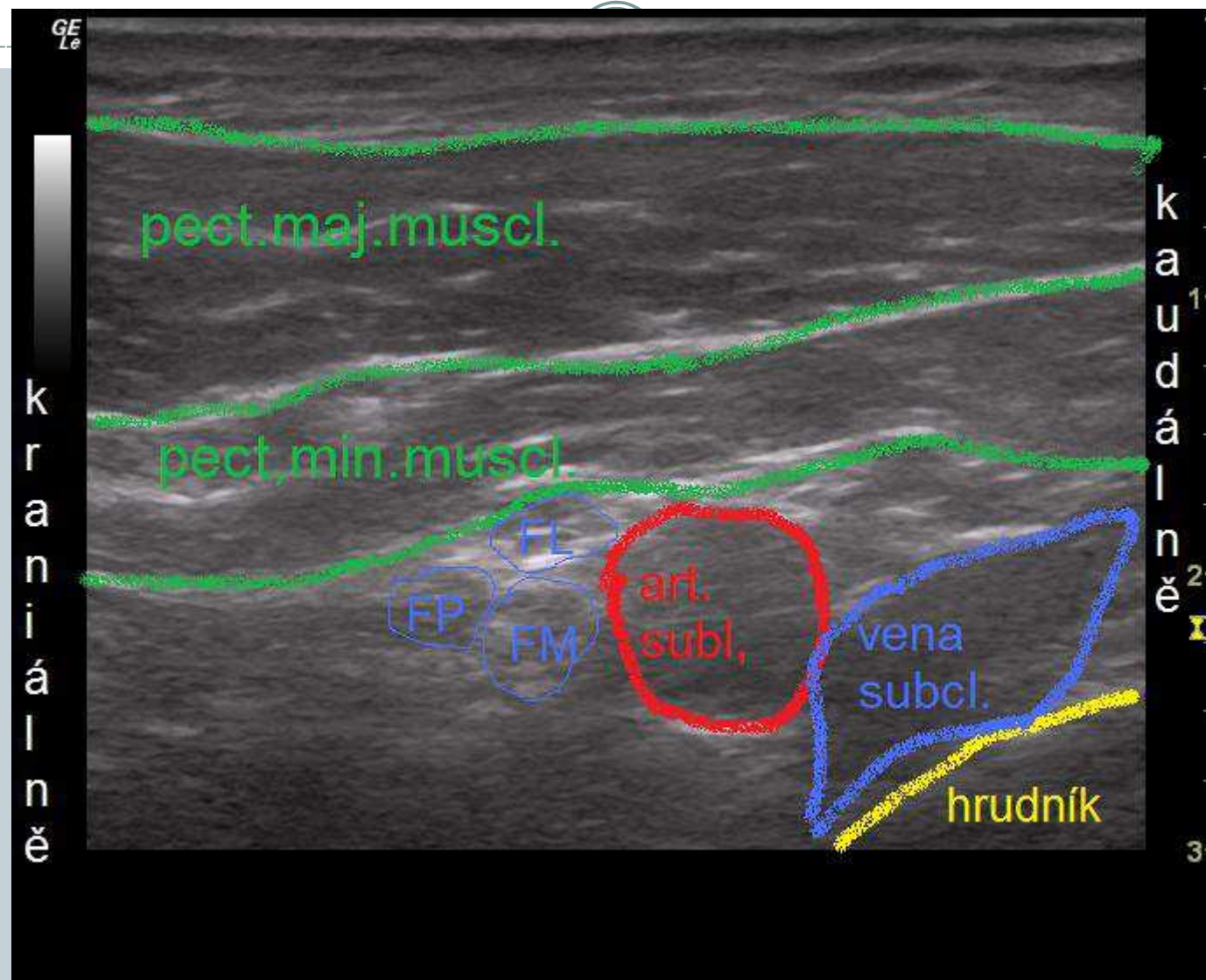
Infraklavikulární blok-UZ-poloha ruky podél těla



Infraklavikulární blok-UZ-upažení ruky



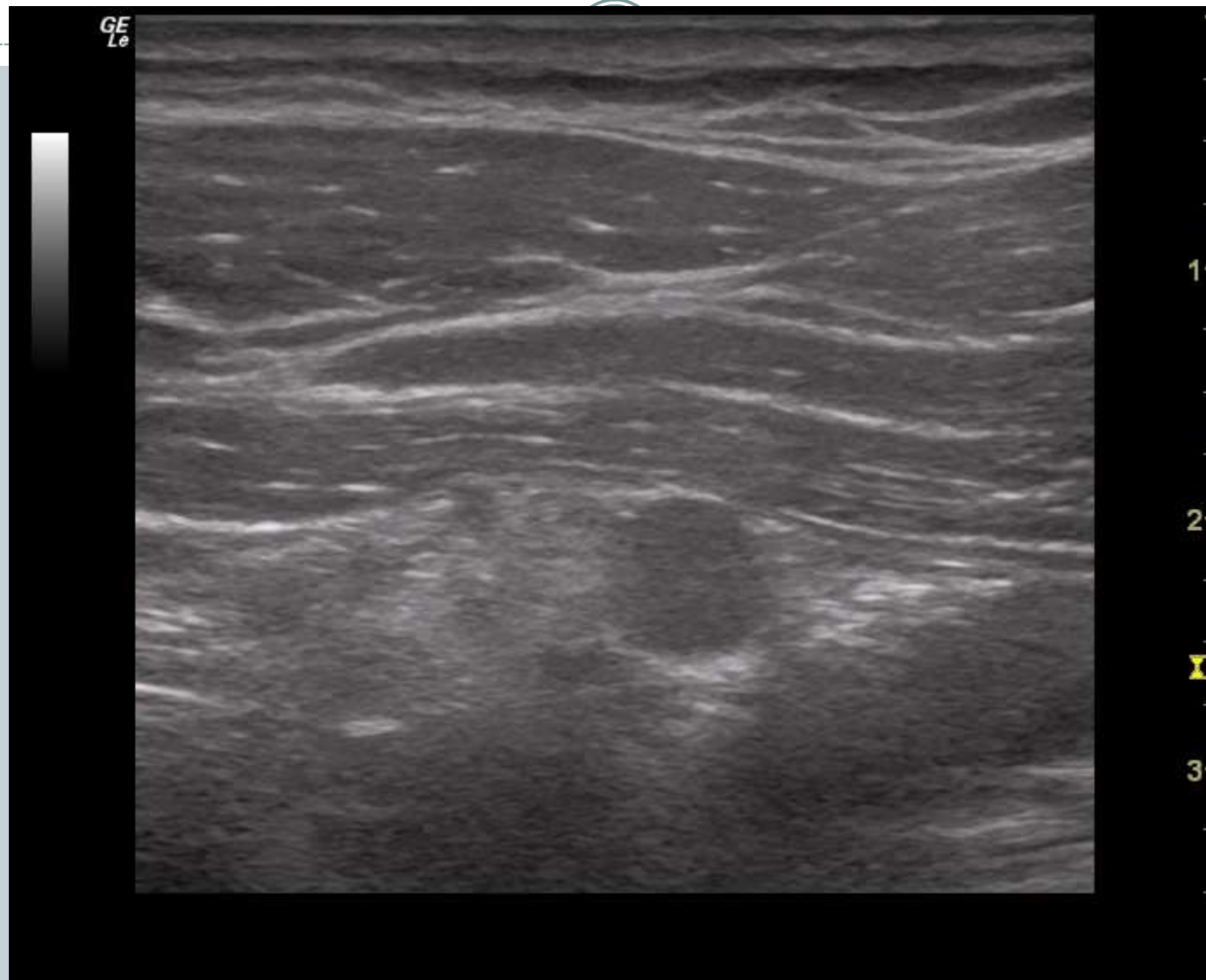
Infraklavikulární blok-UZ-upažení ruky



Infraklavikulární blok-UZ-těsně pod klíčkem



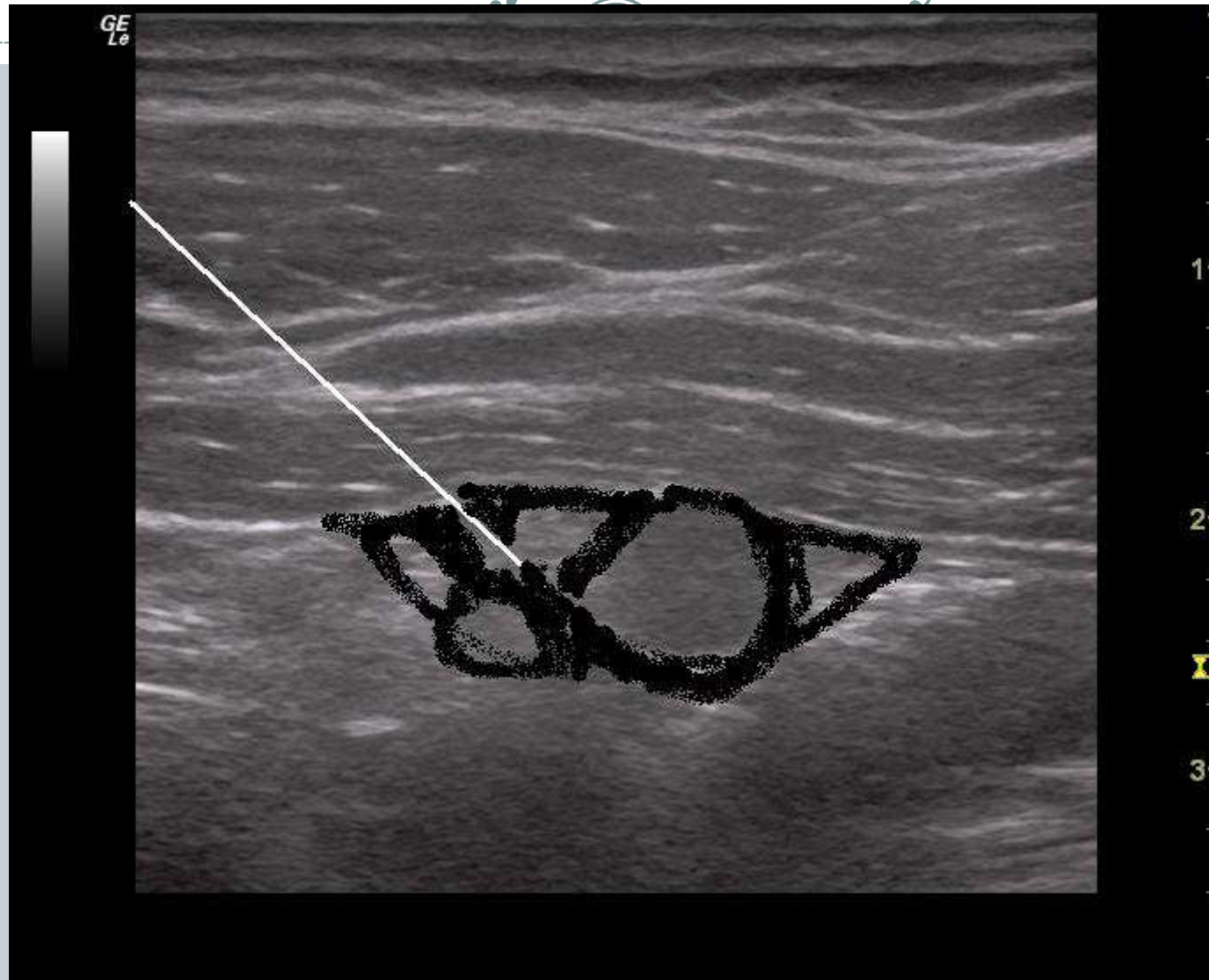
Infraklavikulární blok- UZ-subcoracoideálně



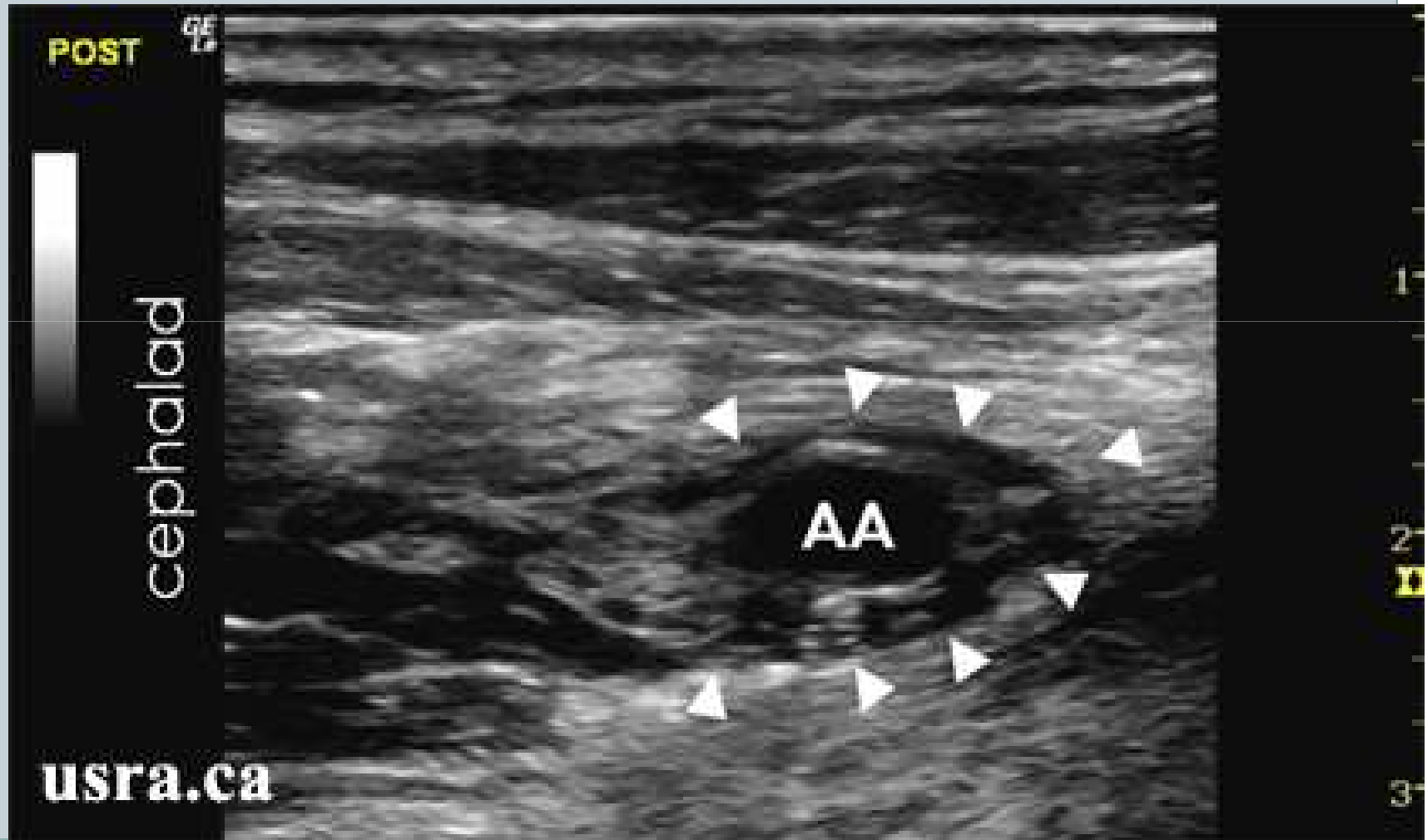
Stimulační jehla-první bolus



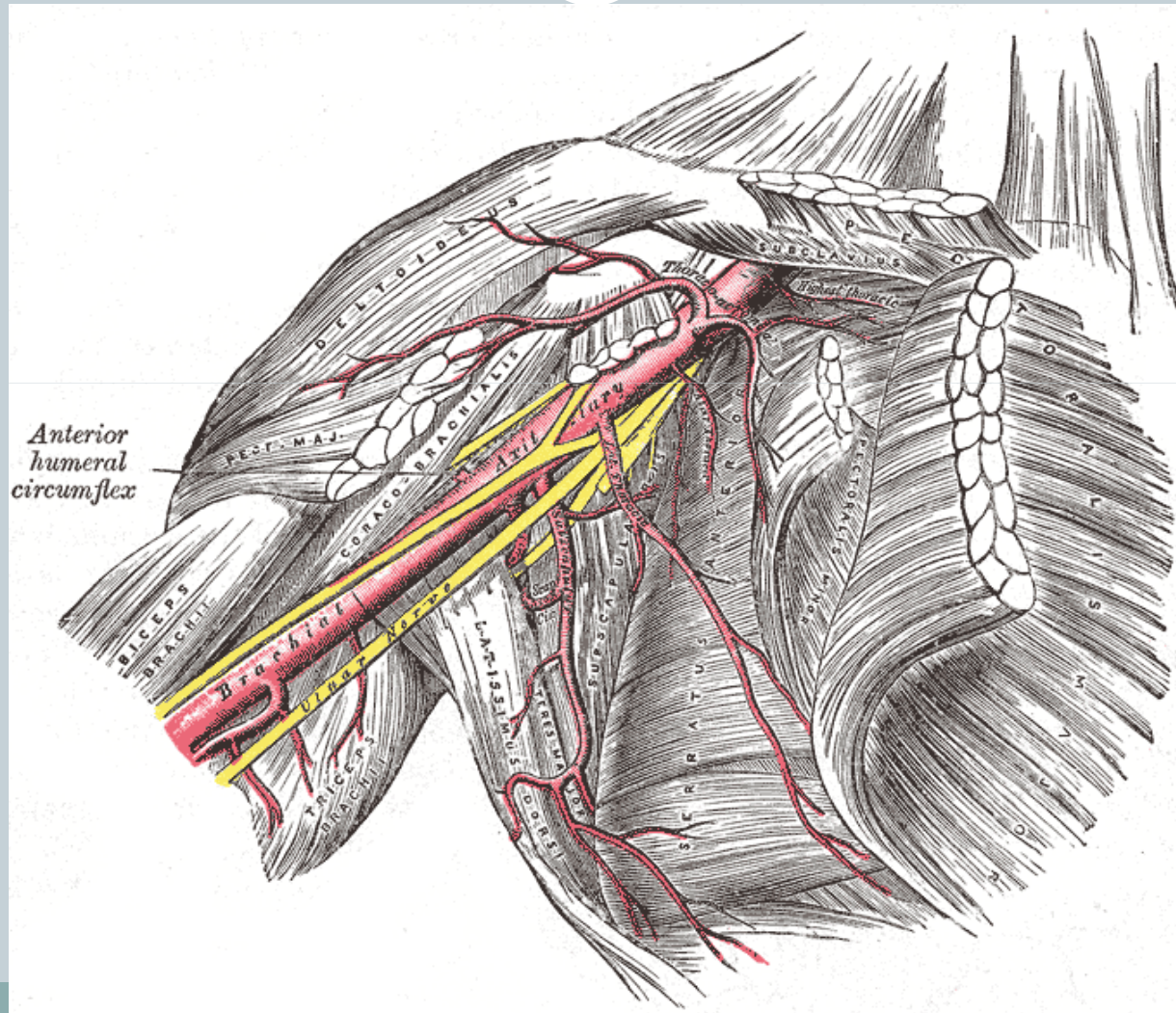
Stimulační jehla-druhý bolus



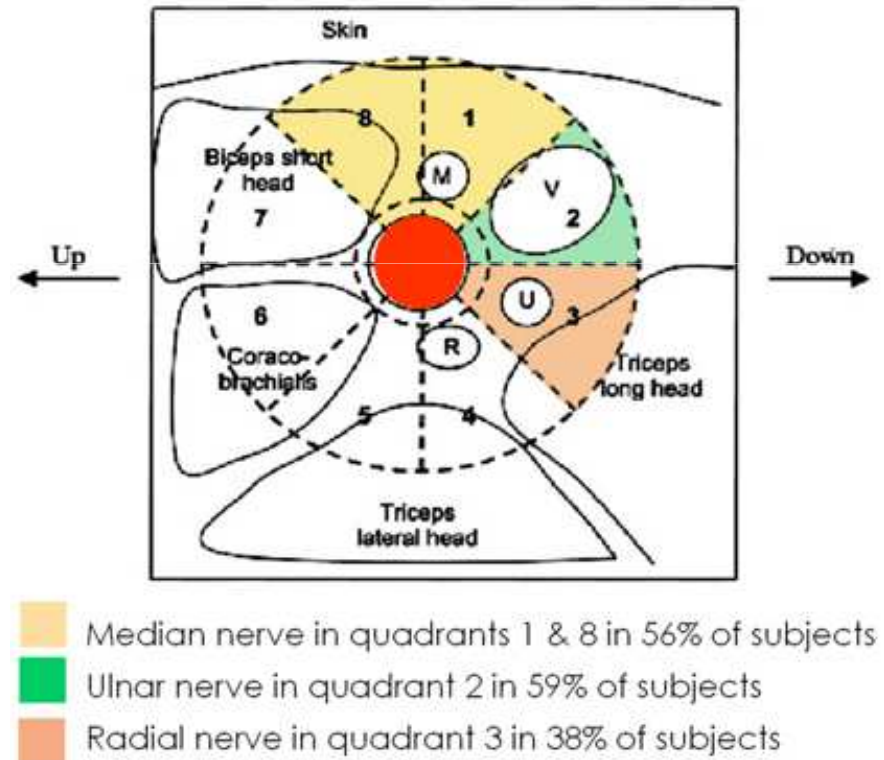
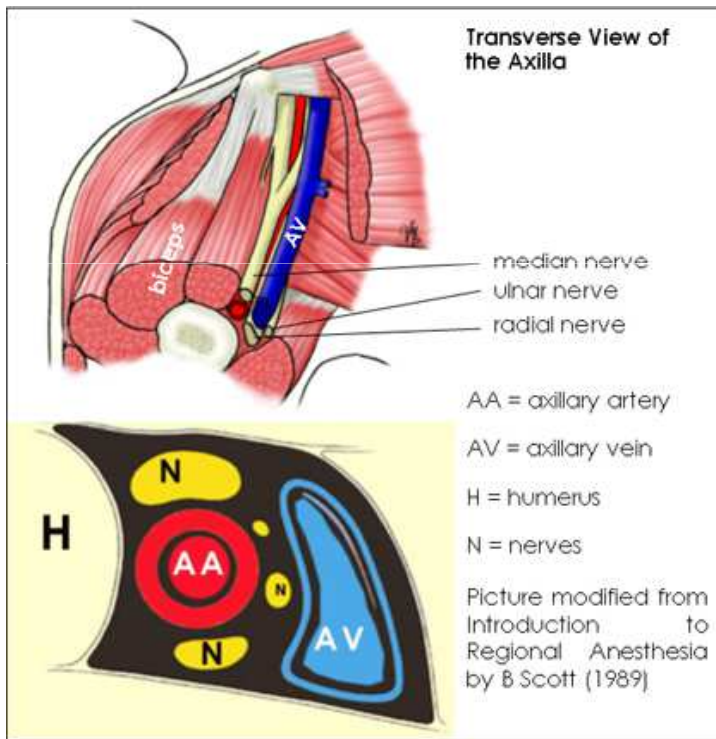
Infraklavikulární blok-UZ



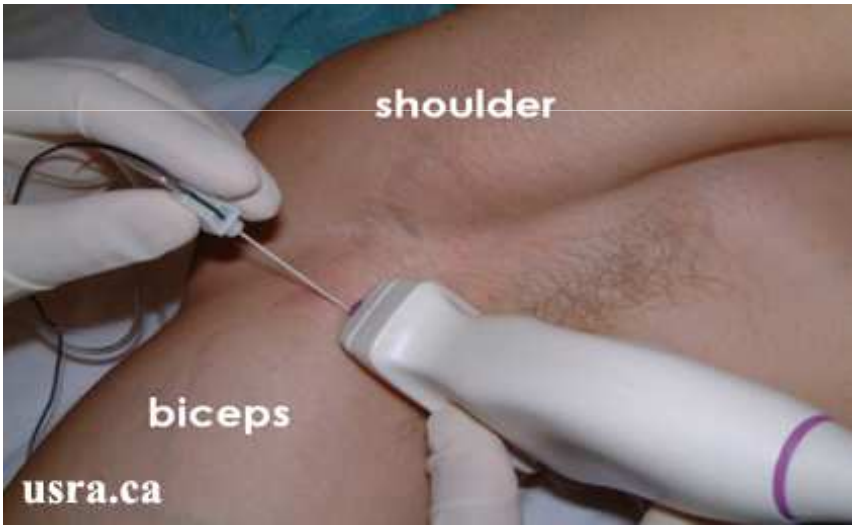
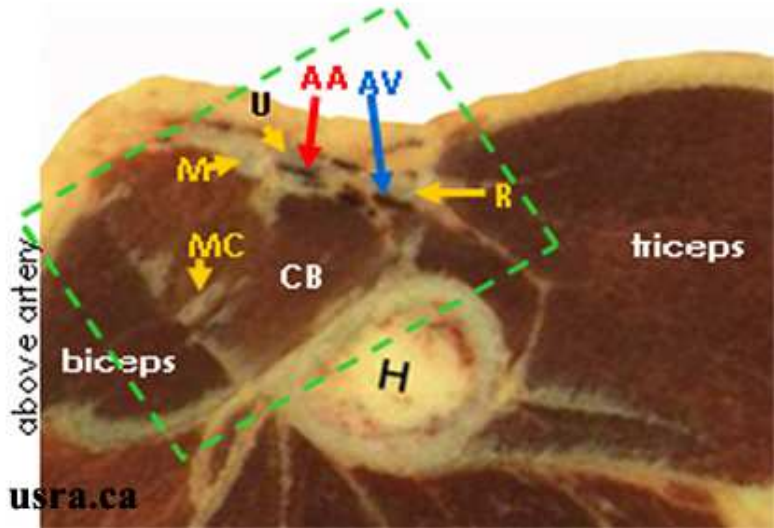
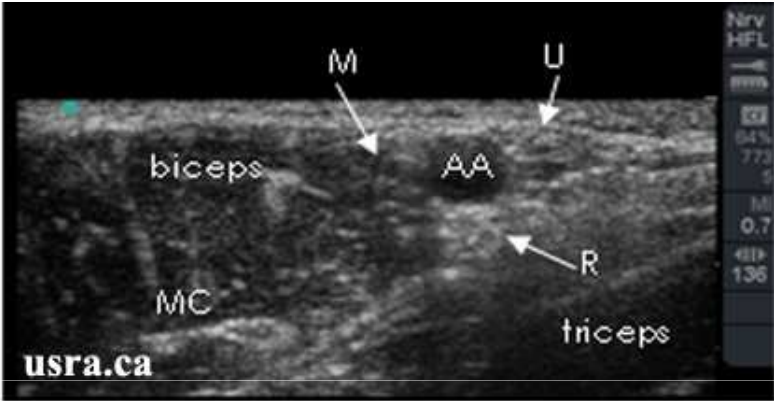
Brach plexus axilárně



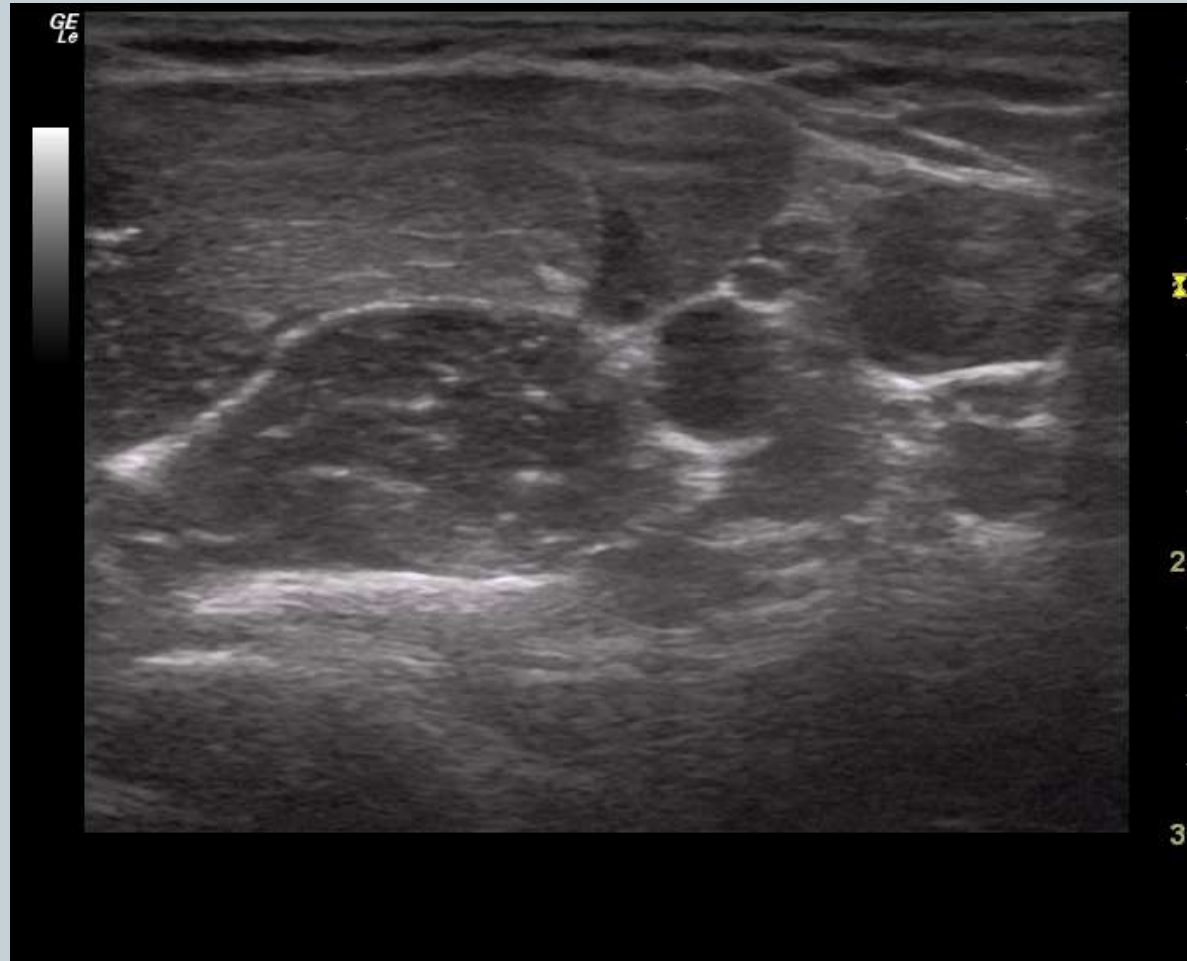
Axilární blok



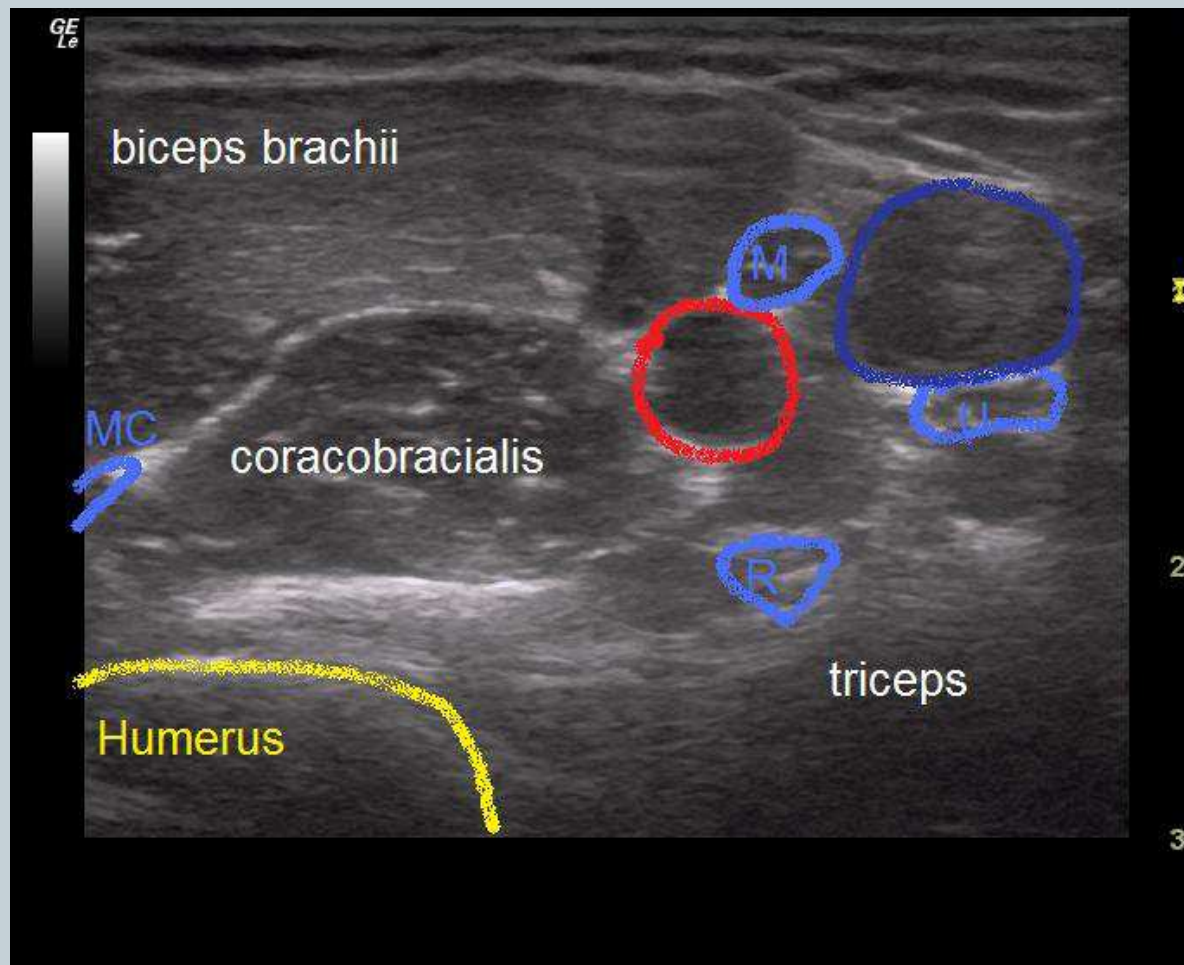
Axilární blok



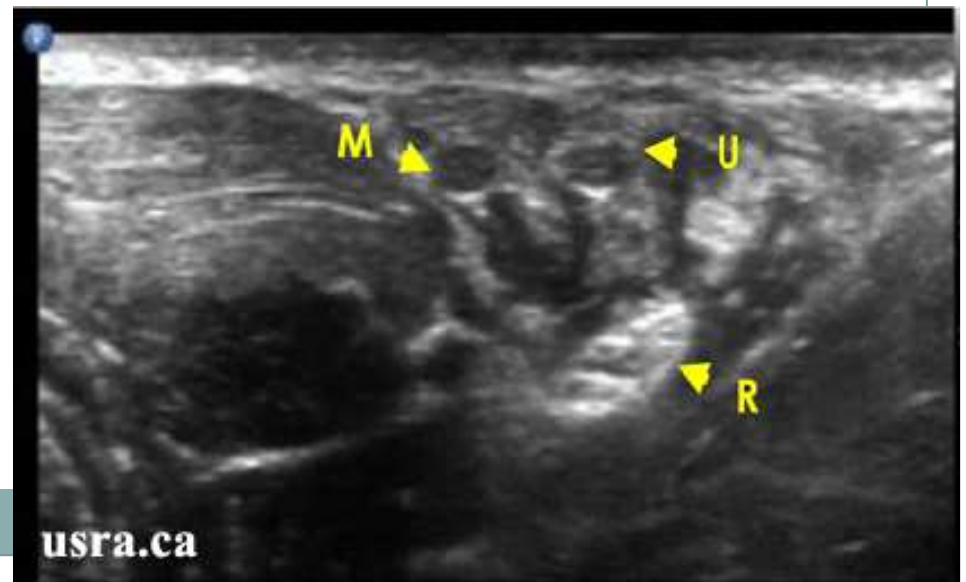
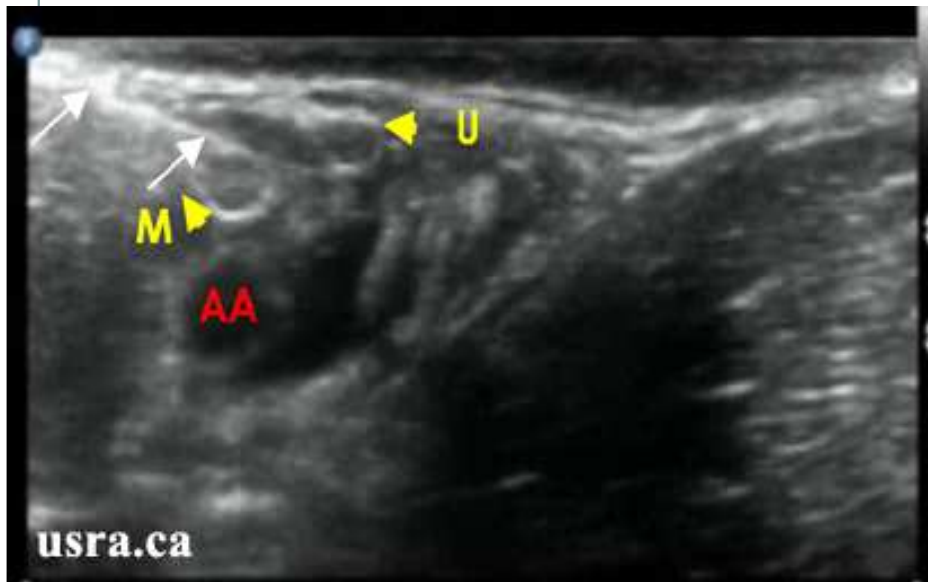
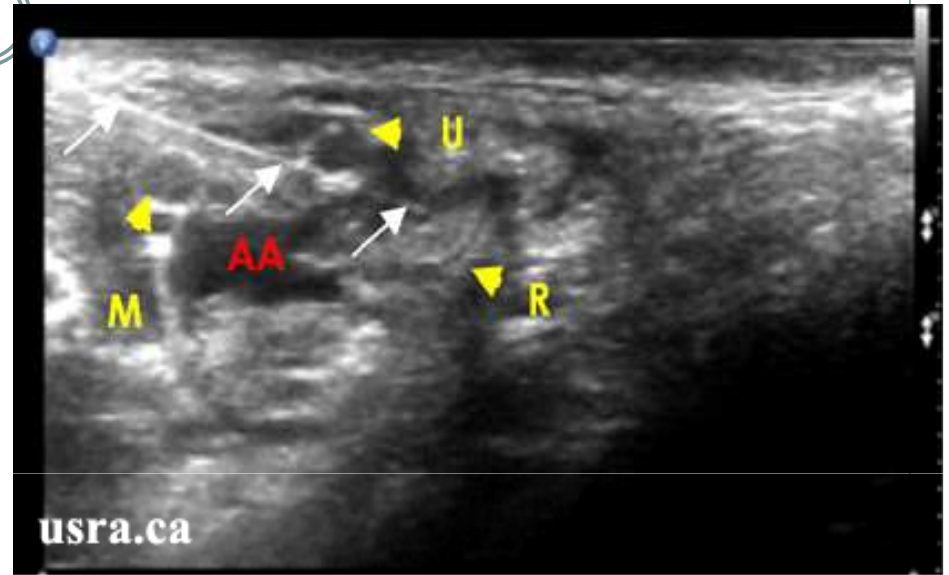
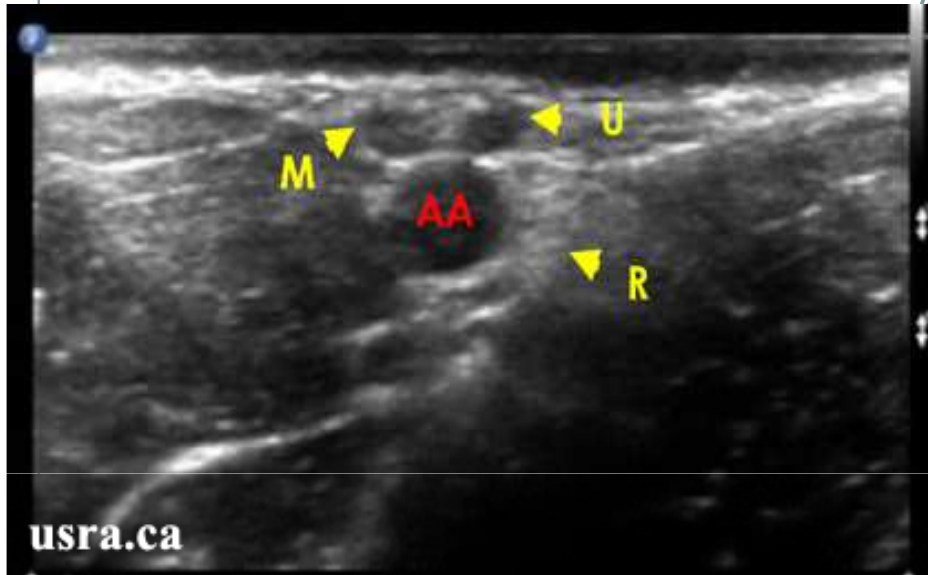
Nervy axilární



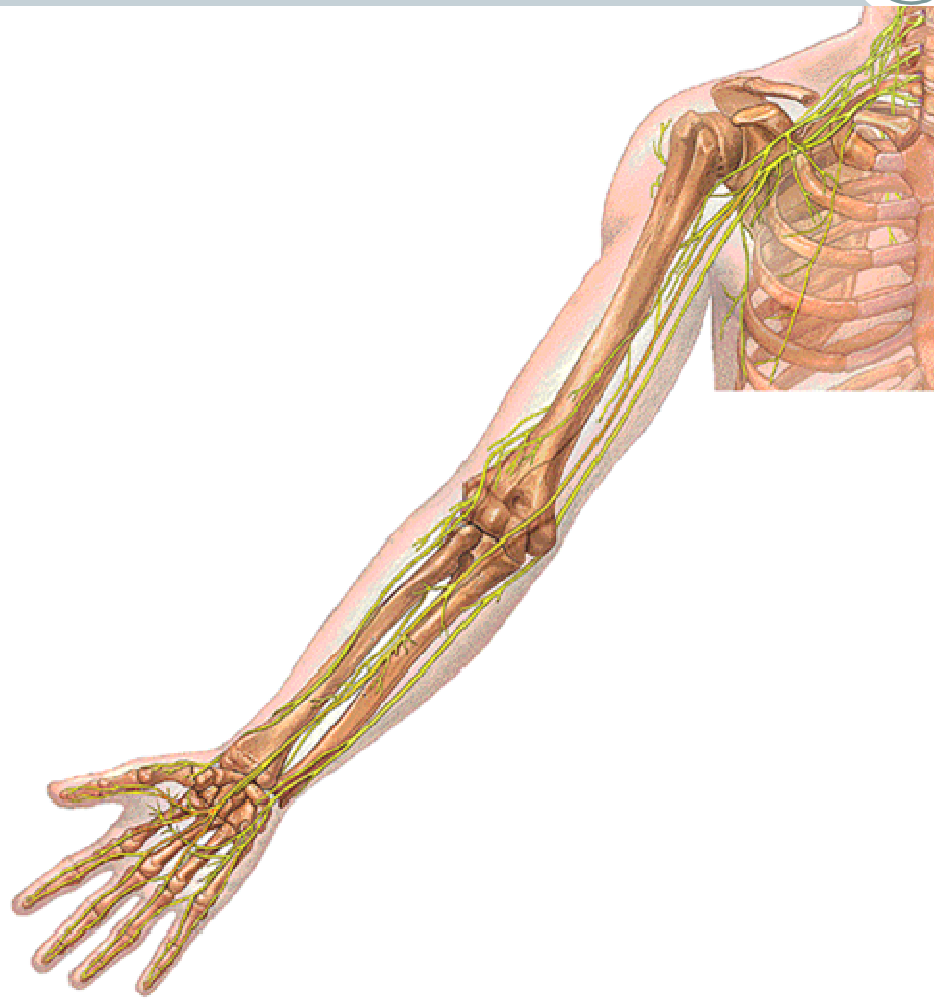
Nervy axilárně



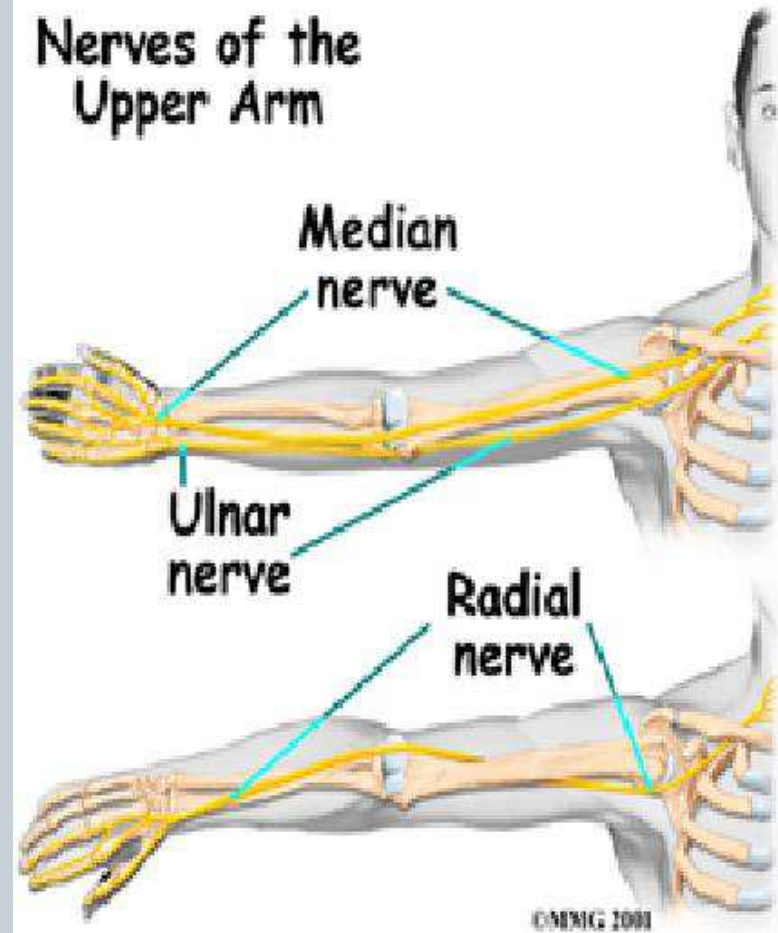
Axilární blok



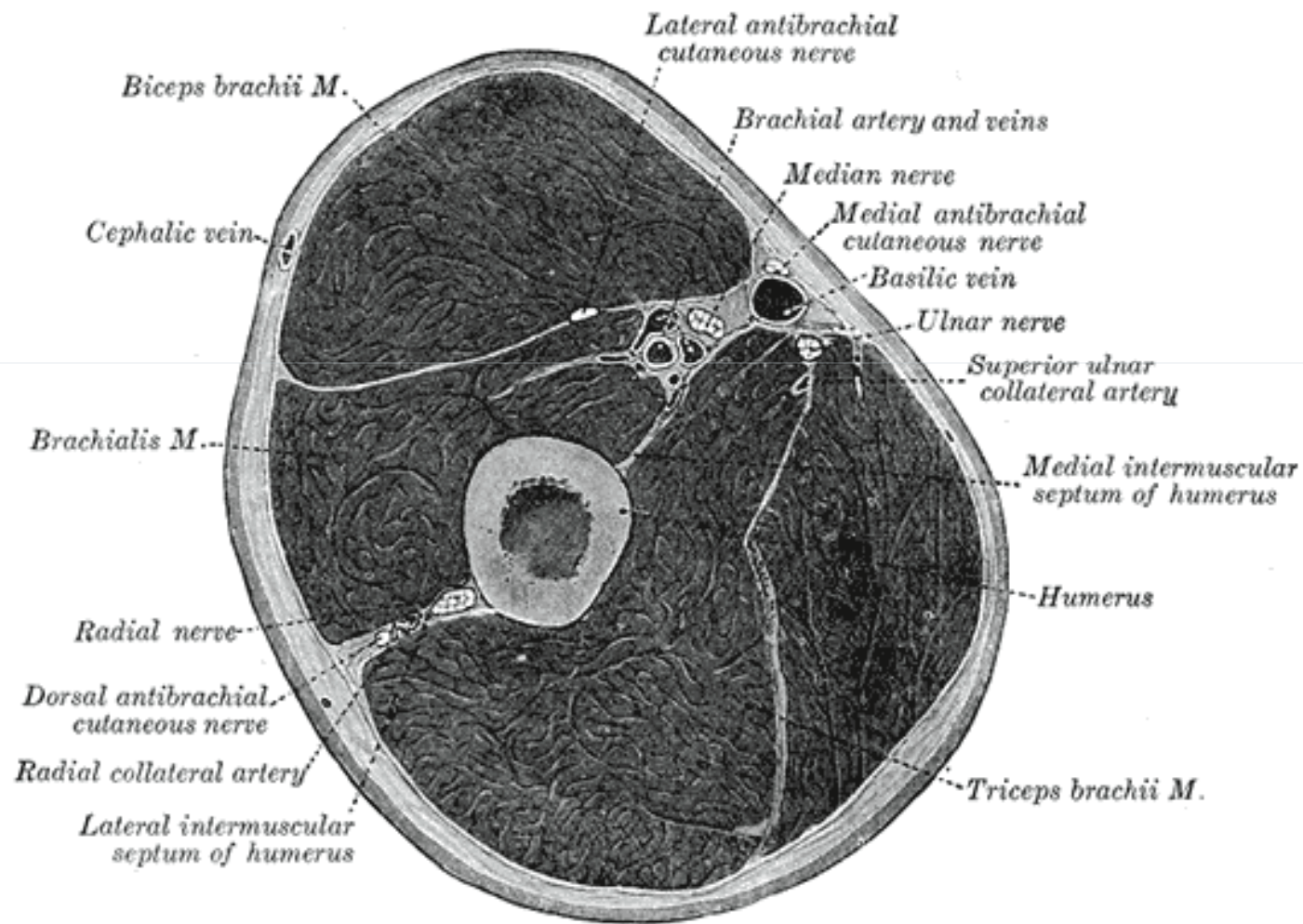
Průběh nervů na HK



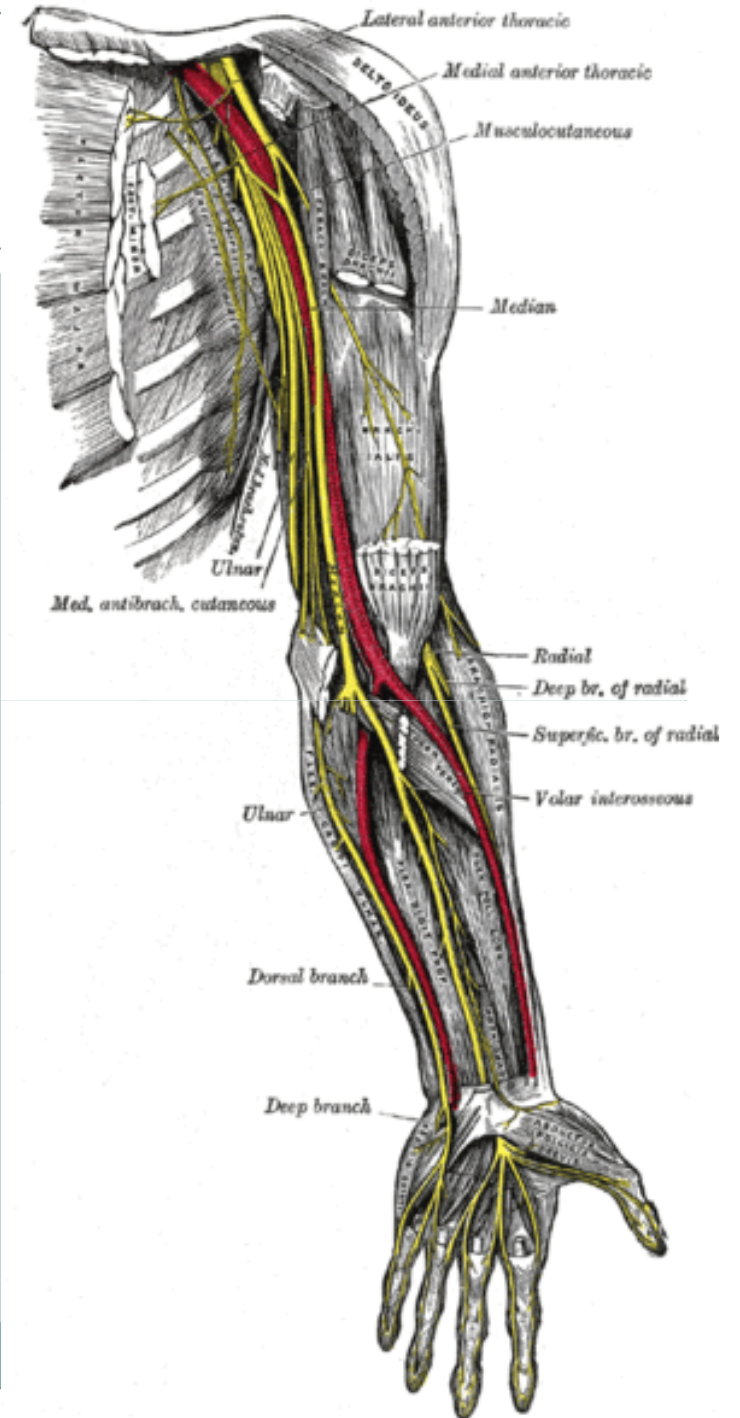
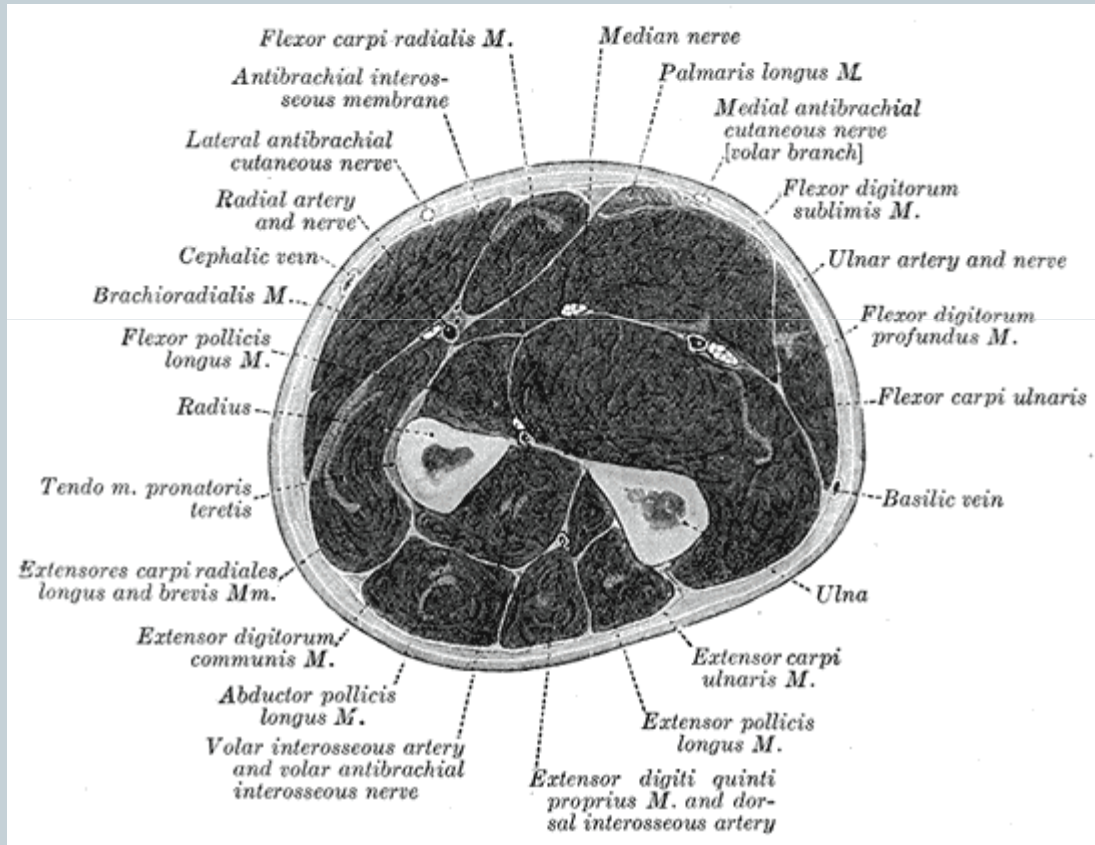
Nerves of the Upper Arm



Brach. plexus – distální paže



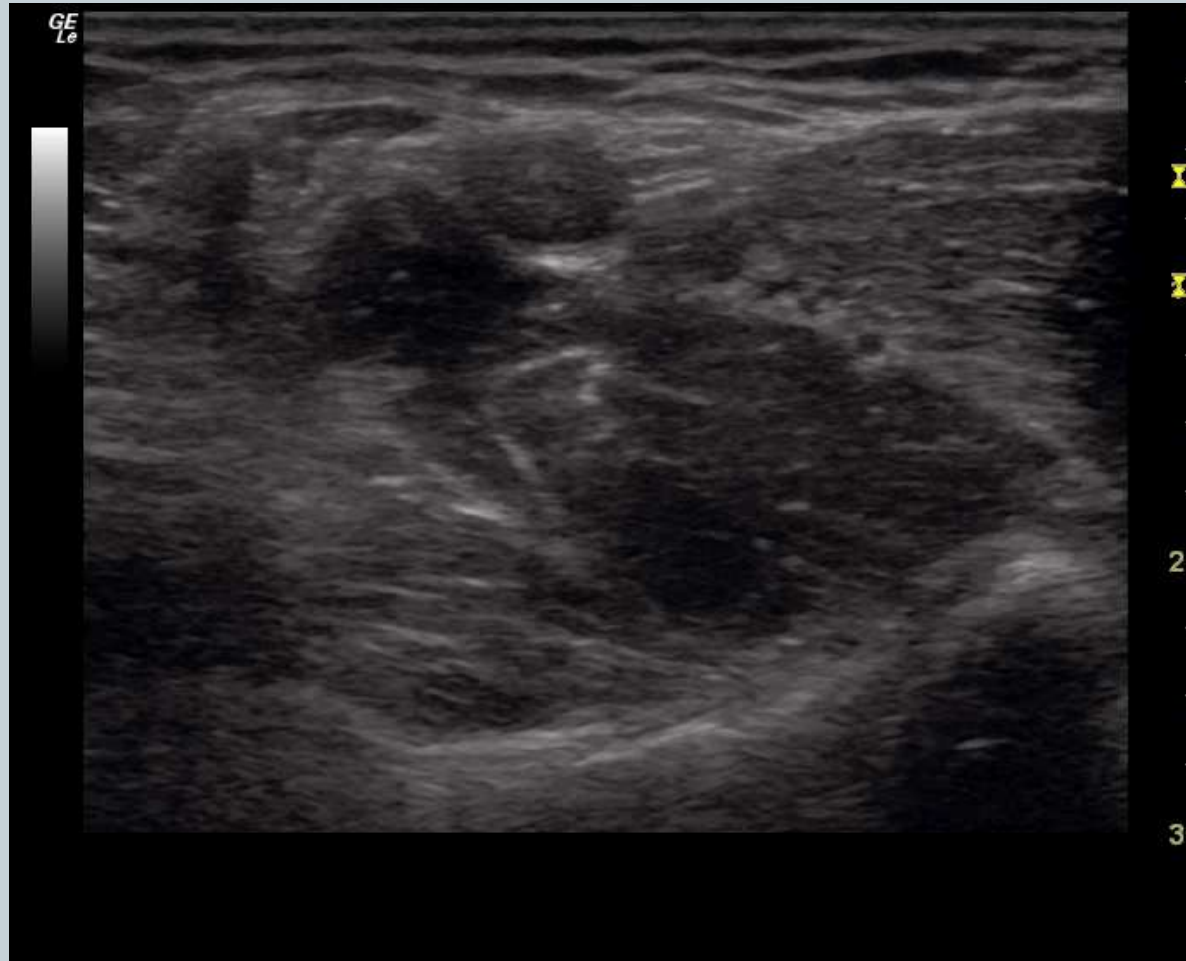
N. medianus+n. ulnaris



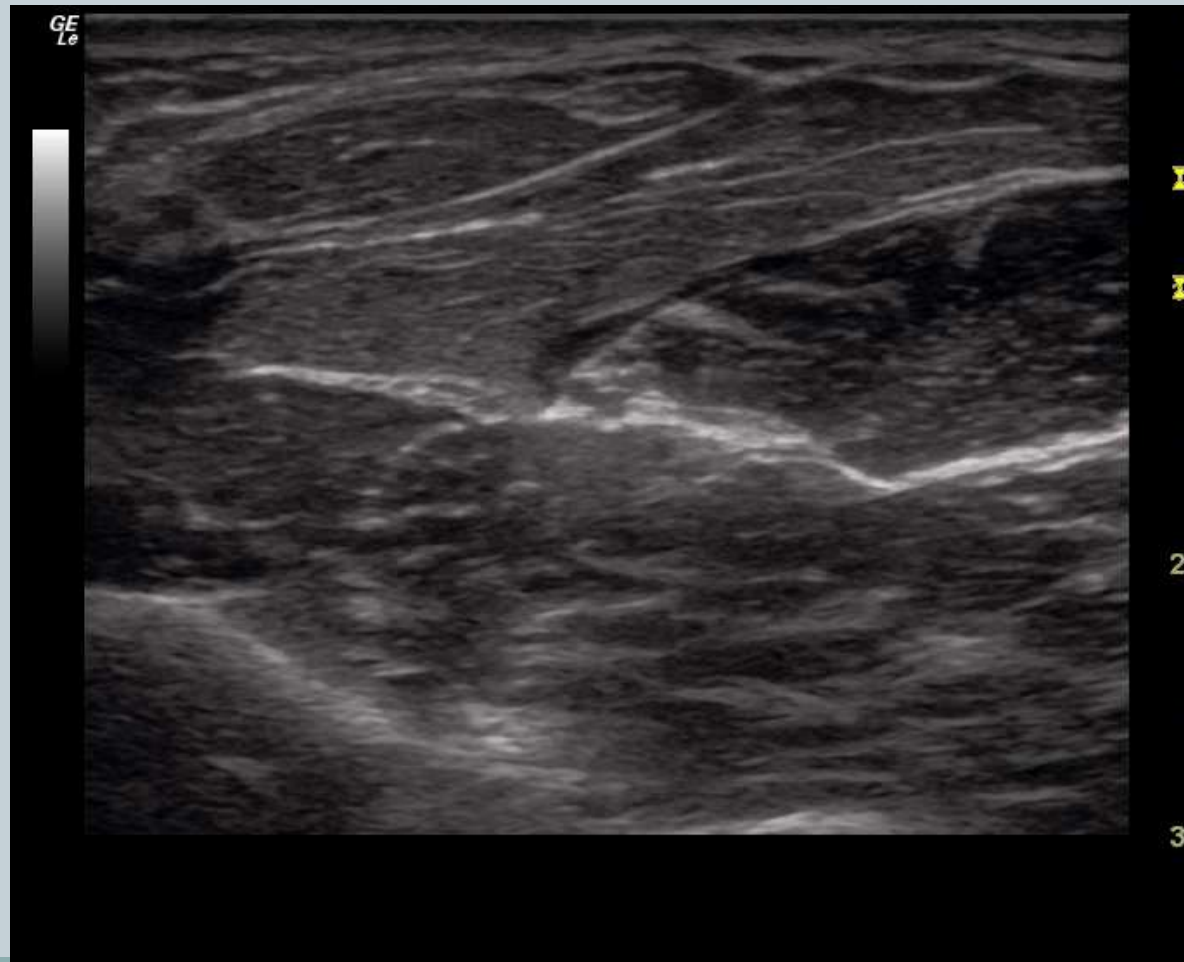
N.medianus paže



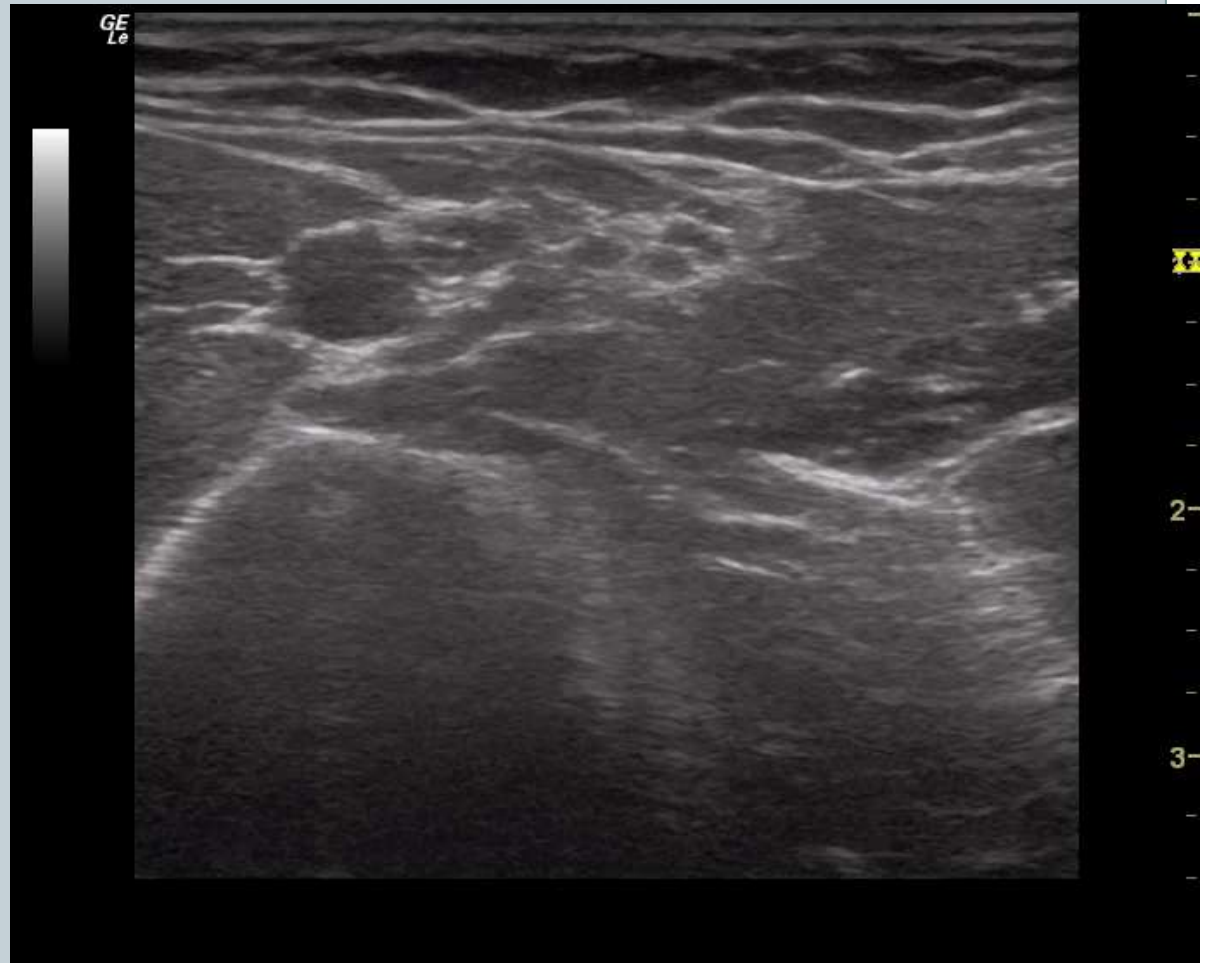
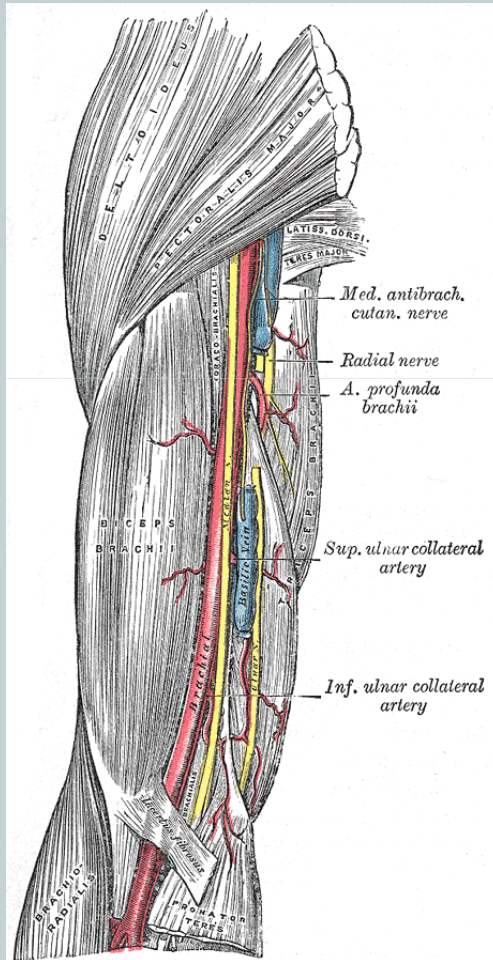
N. medianus-loket



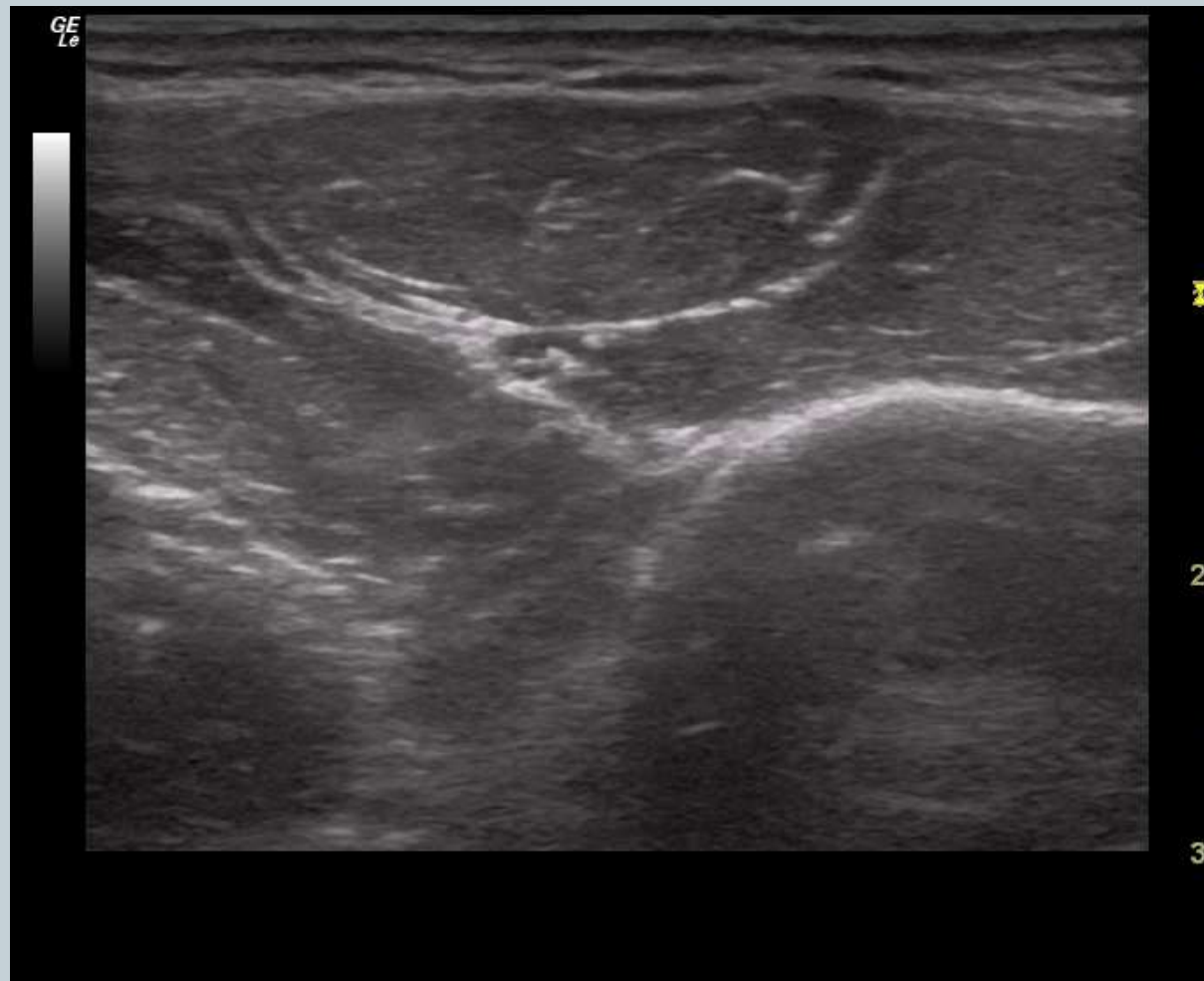
N. medianus-dist.předloktí



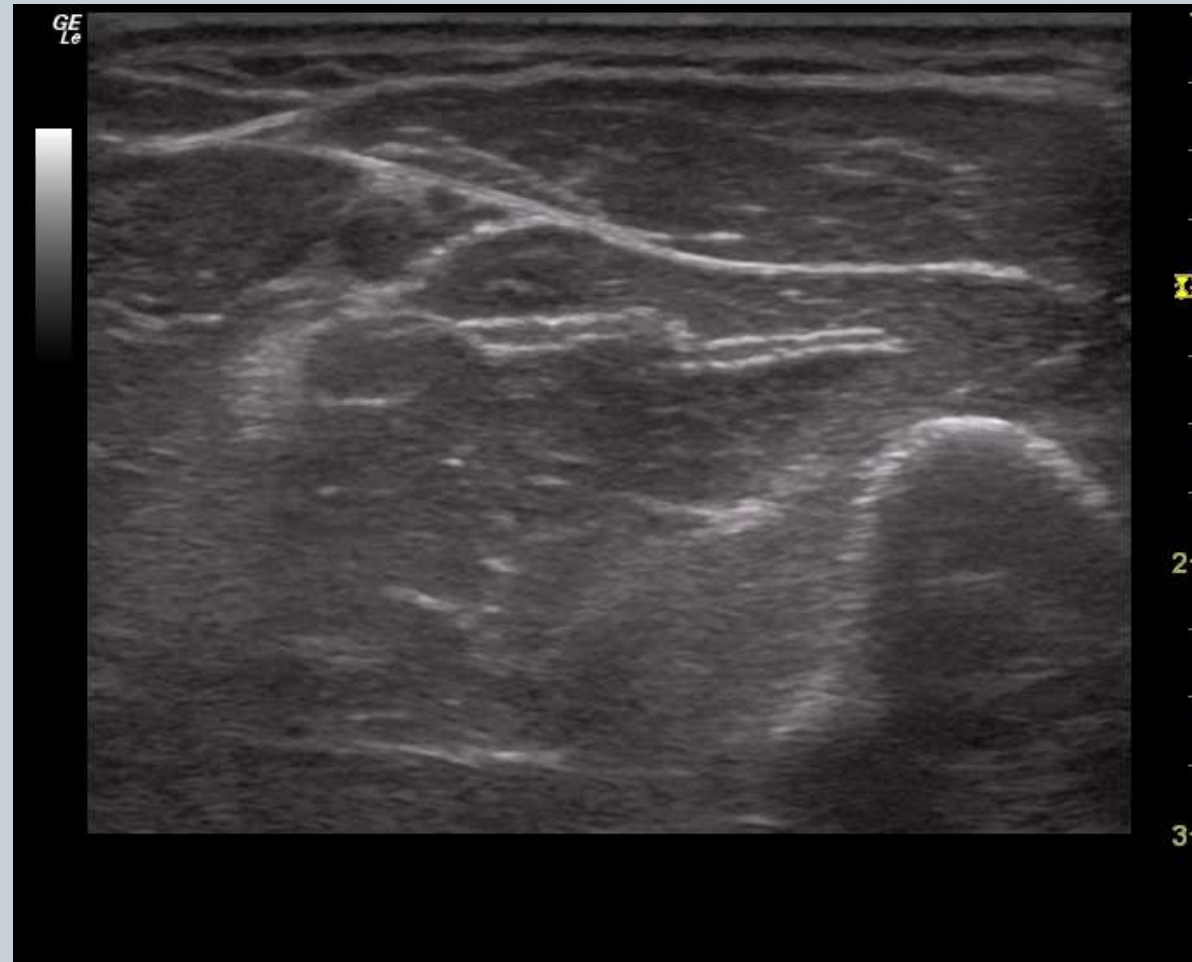
N. ulnaris-paže



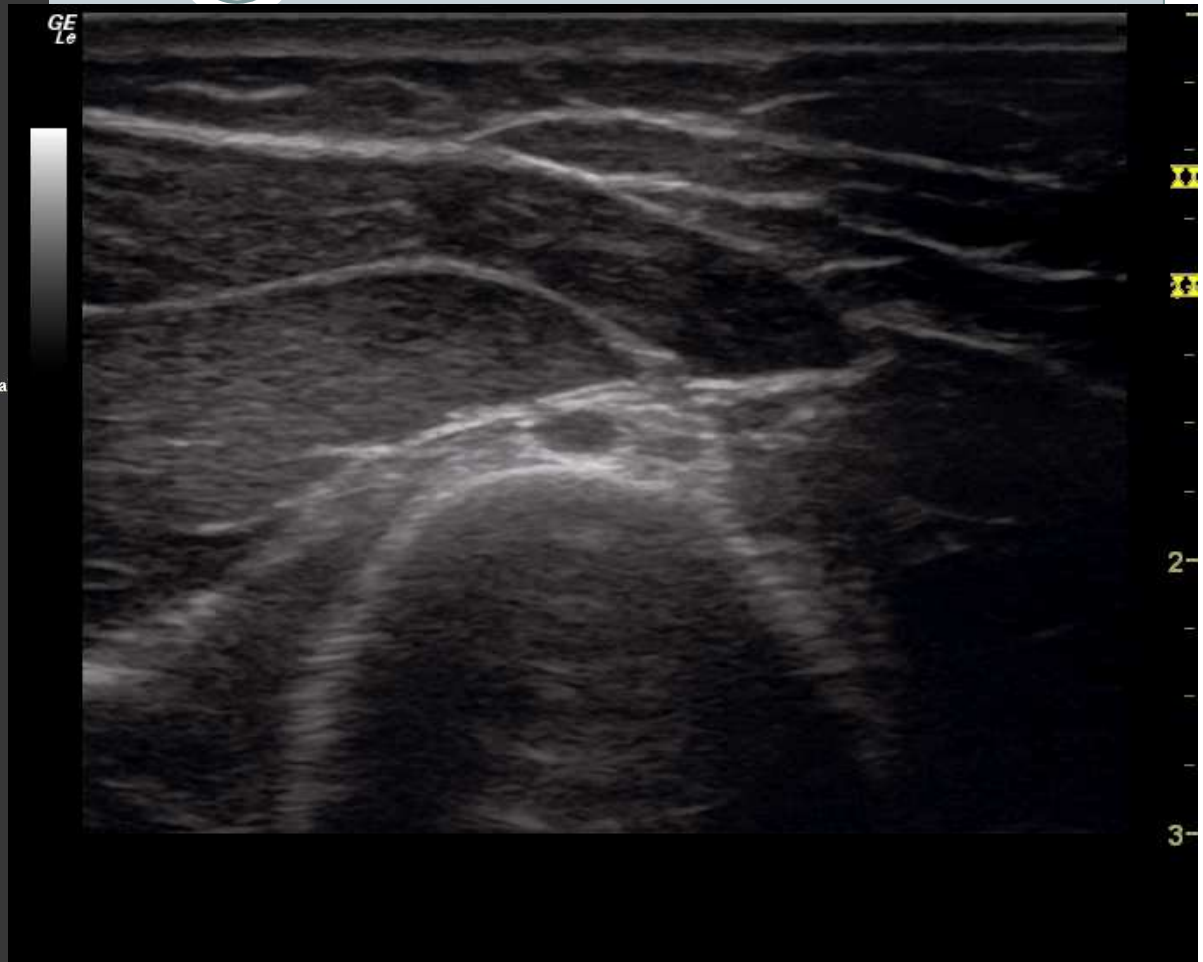
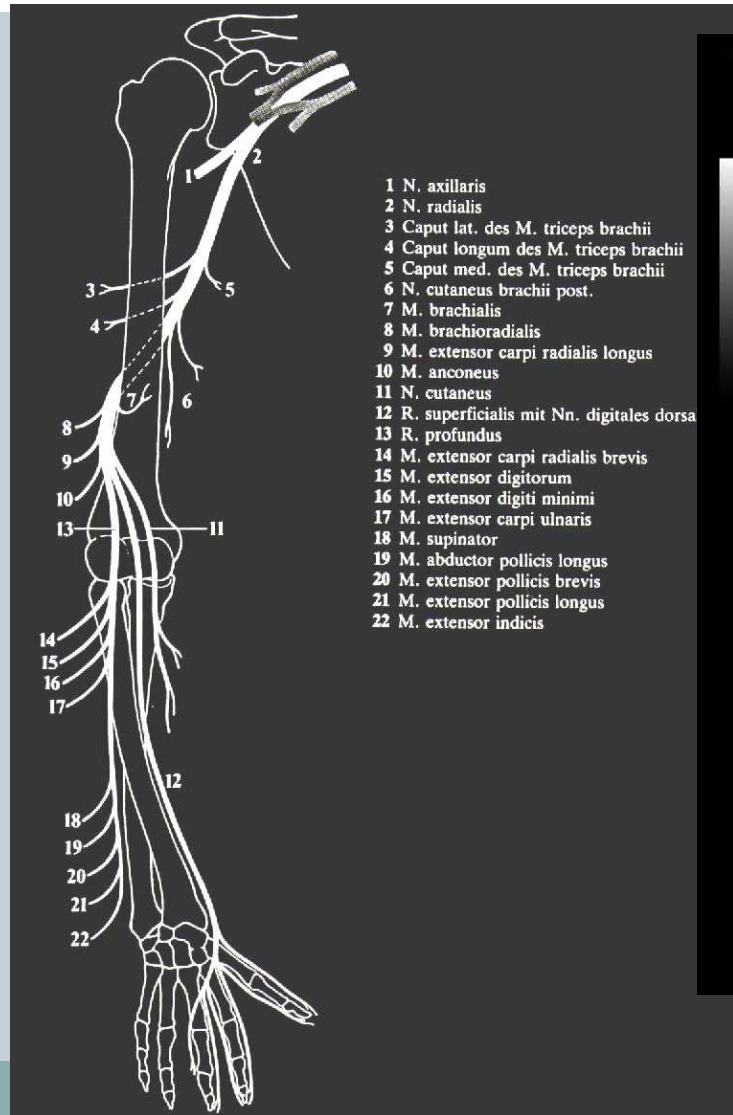
N. ulnaris-předloktí



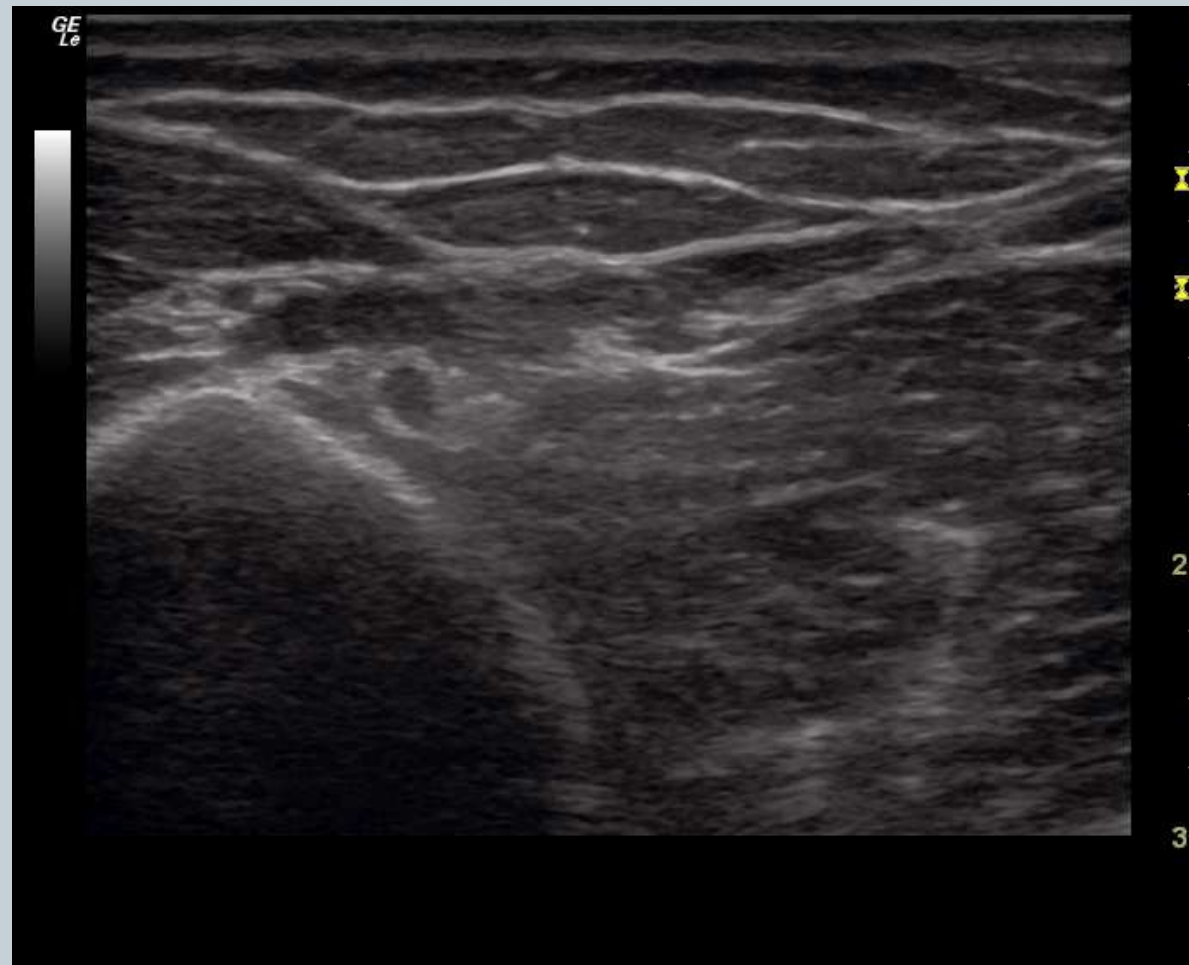
N. ulnaris-předloktí



N.radialis-paže



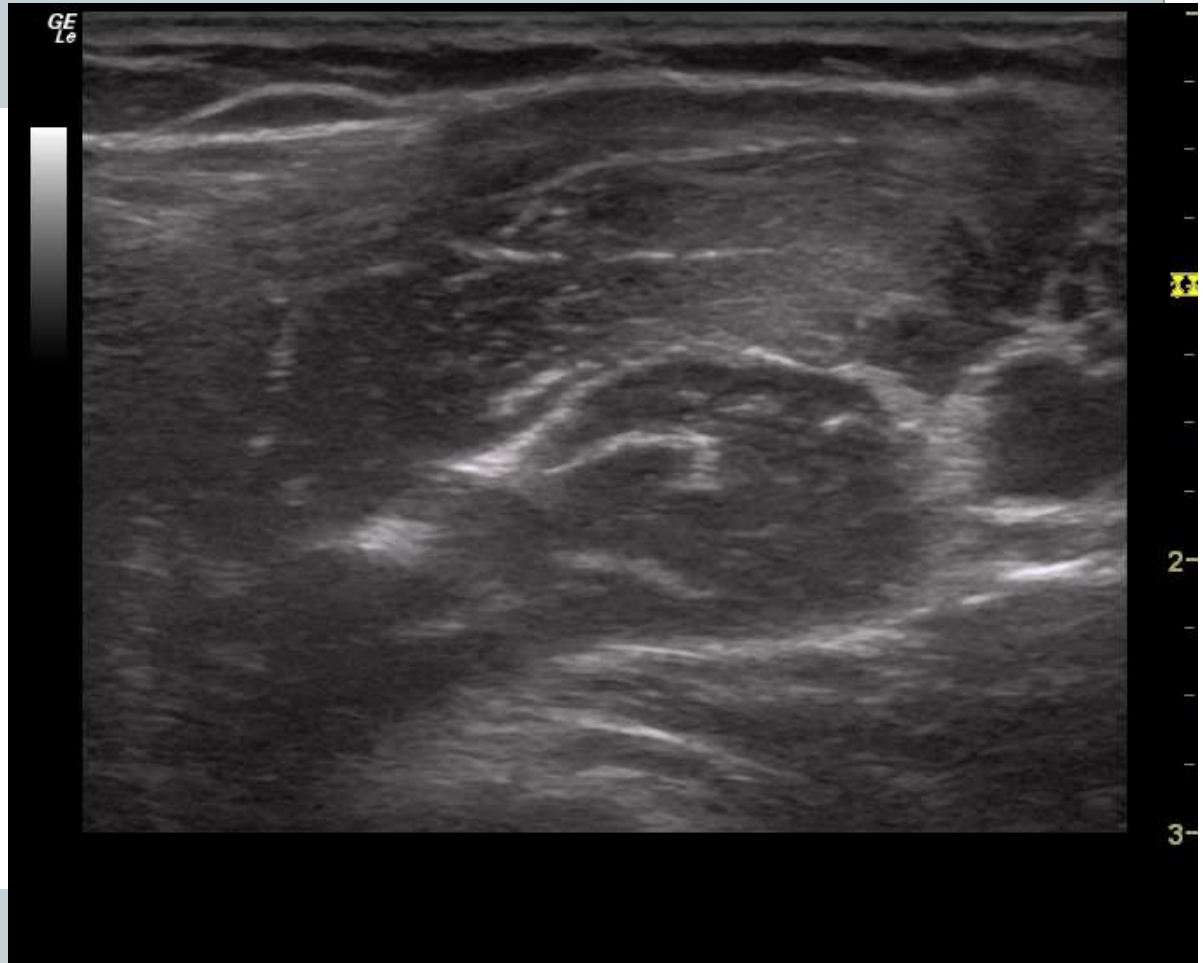
N.radialis-distální paže



N.radialis-loket



N.musculocutaneus



Provedení blokády periferních nervů

- Jehla nikdy nesměruje přímo na nerv, ale vždy vedle něj.
- Využijte fascie k šíření LA
- 3-5 ml LA

