

# Ultrazvuková anatomie brachiálního plexu supraklavikulárně



**MILAN JELÍNEK**  
**BRNO**

# Brachiální plexus

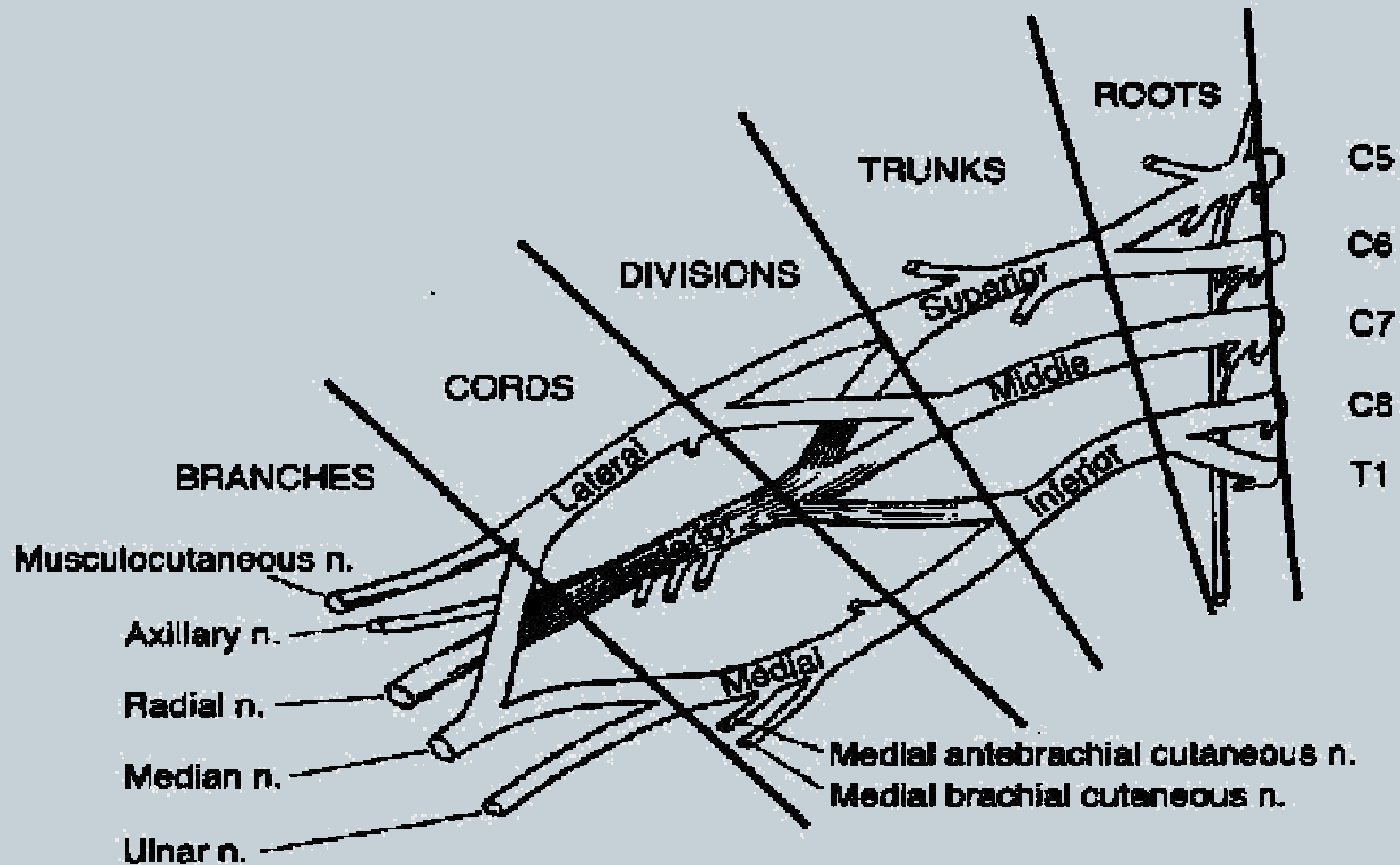
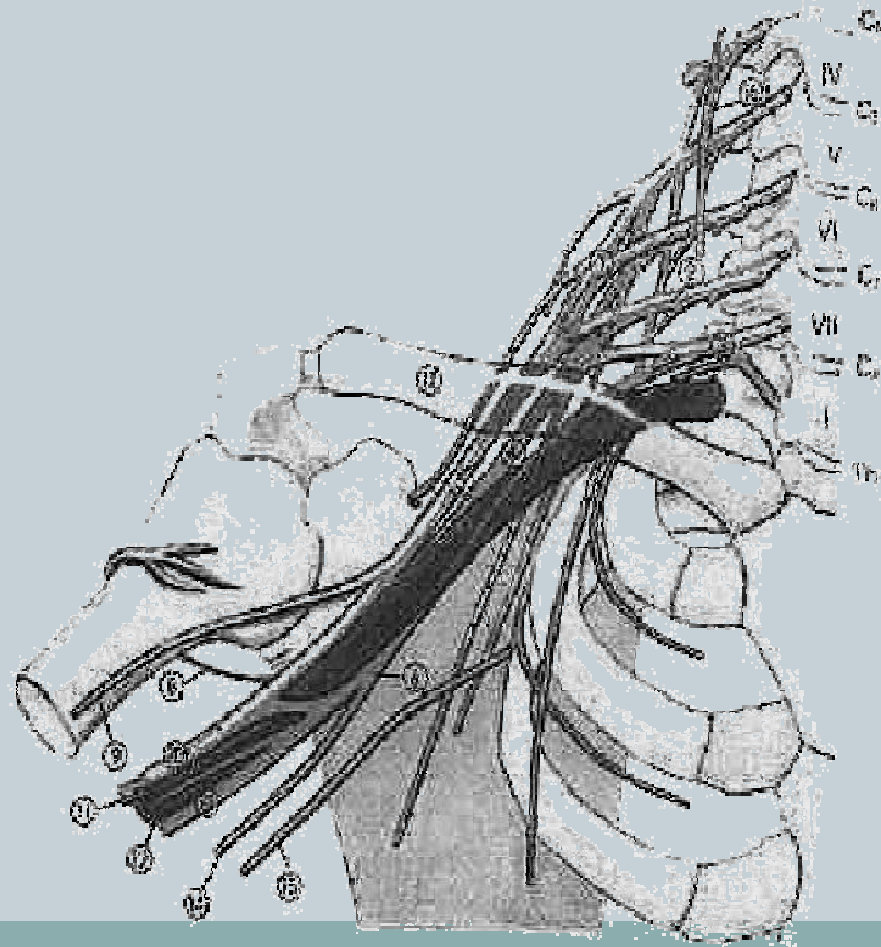


Fig. 47-1. Roots, trunks, divisions, cords, and branches of the brachial plexus.



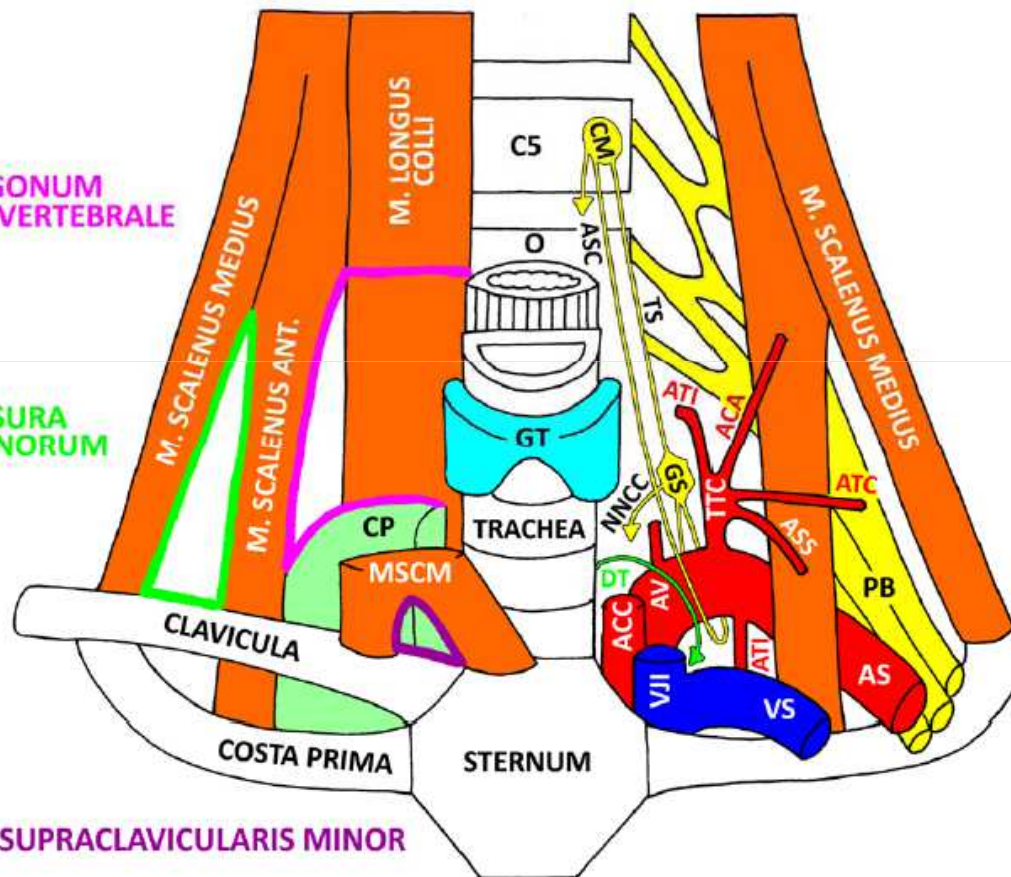
- 1) truncus superior
- 2) truncus medius
- 3) truncus inferior
- 4) fasc. posterior
- 5) fasc. lateralis
- 6) fasc. medialis
- 7) a. axillaris
- 8) n. axillaris
- 9) n. musculocutaneus
- 10) n. medianus
- 11) n. radialis
- 12) n. cut. med. antebrachii
- 13) n. ulnaris
- 14) n. cut. brachii med.
- 15) n. intercostobrachialis
- 16) n. phrenicus
- 17) clavicula



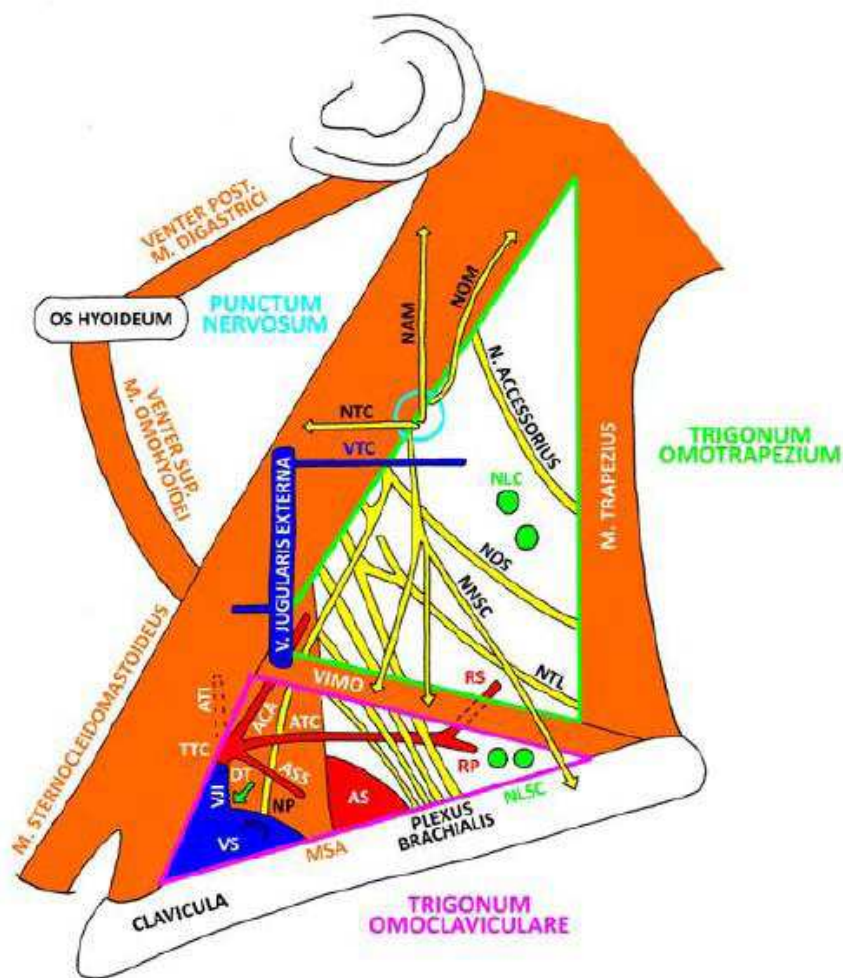
TRIGONUM  
SCALENOVERTEBRALE

FISSURA  
SCALENORUM

FOSSA SUPRACLAVICULARIS MINOR

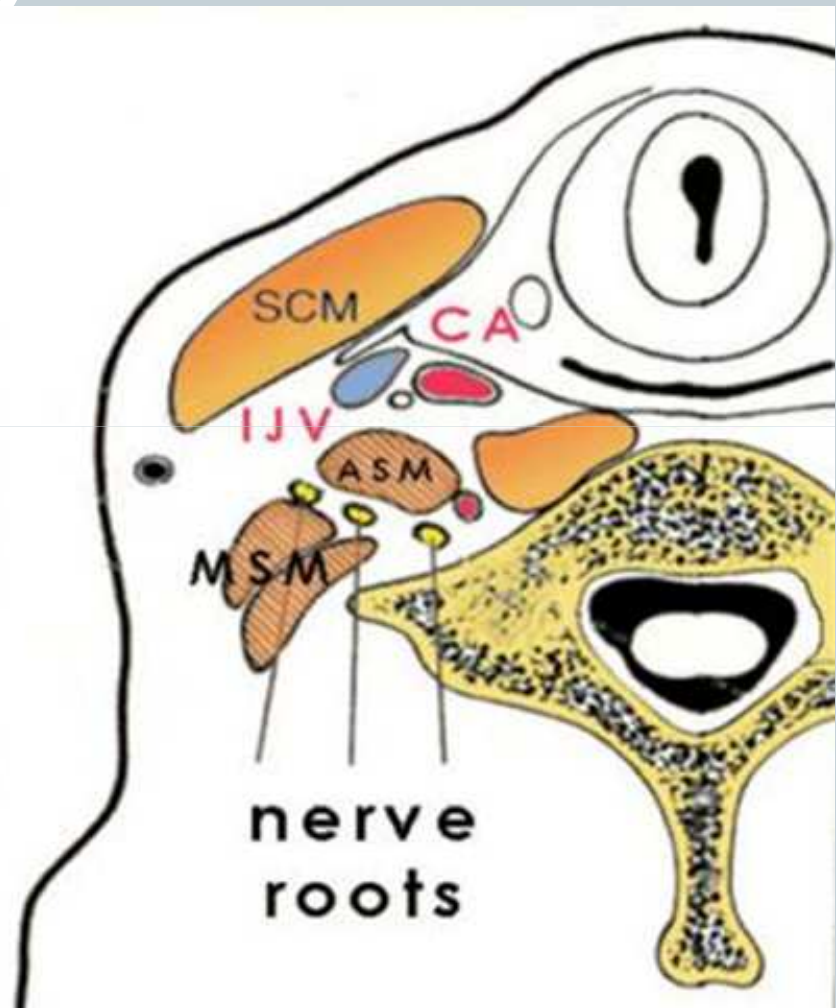
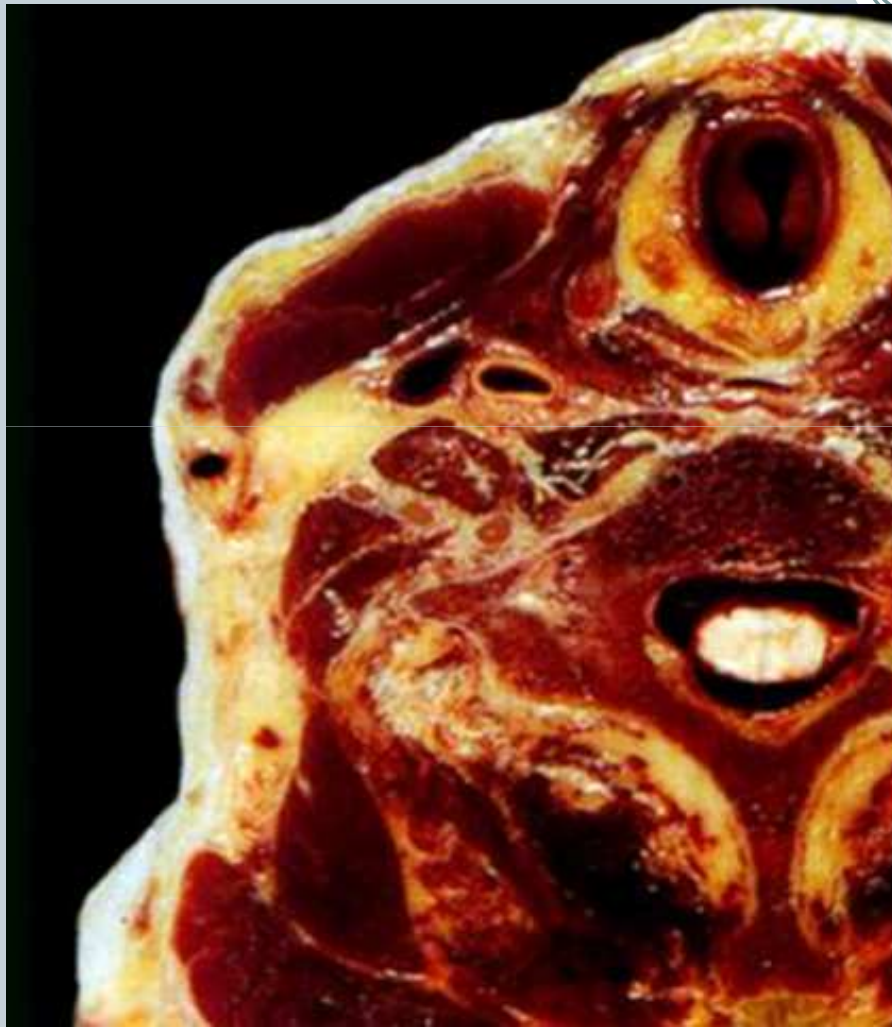


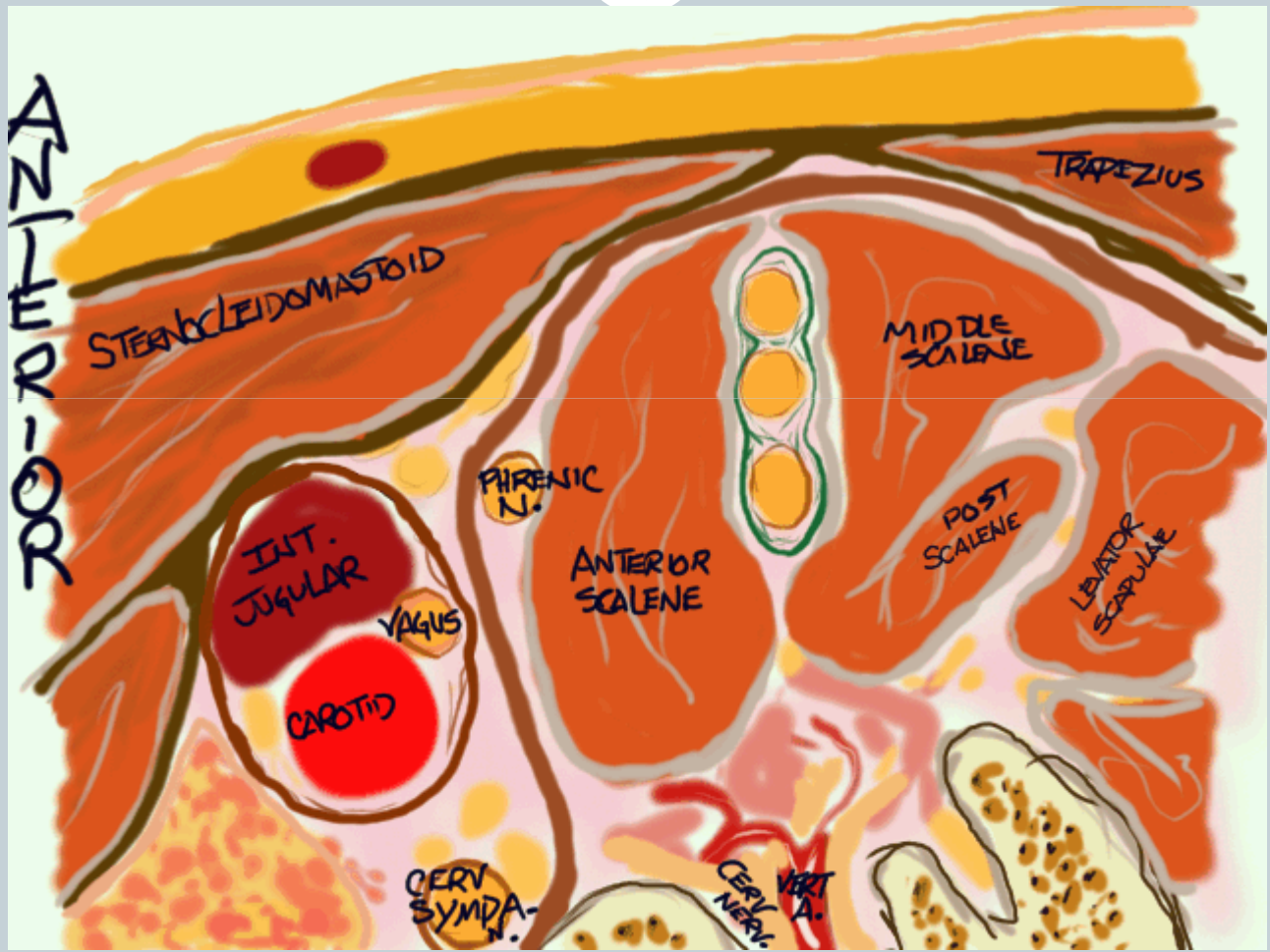
- CM - GANGLION CERVICALE MEDIUM
- O - OESOPHAGUS
- ASC - ANSA SUBCLAVIA
- TS - TRUNCUS SYMPATHICUS
- GT - GLANDULA THYROIDEA
- NNCC - NN. CARDIACI CERVICALES
- GS - GANGLION STELLATUM
- TTC - TRUNCUS THYROCERVICALIS
- ATI - A. THYROIDEA INF.
- ACA - A. CERVICALIS ASCENDENS
- ATS - A. TRANSVERSA CERVICIS
- ASS - A. SUPRASCAPULARIS
- CP - CUPULA PLEURAE
- MSCM - M. STERNOCLEIDOMASTOIDEUS
- DT - DUCTUS THORACICUS
- ACC - A. CAROTIS COMMUNIS
- VJI - V. JUGULARIS INTERNA
- AV - A. VERTEBRALIS
- ATI - A. THORACICA INTERNA
- VS - V. SUBCLAVIA
- AS - A. SUBCLAVIA
- PB - PLEXUS BRACHIALIS



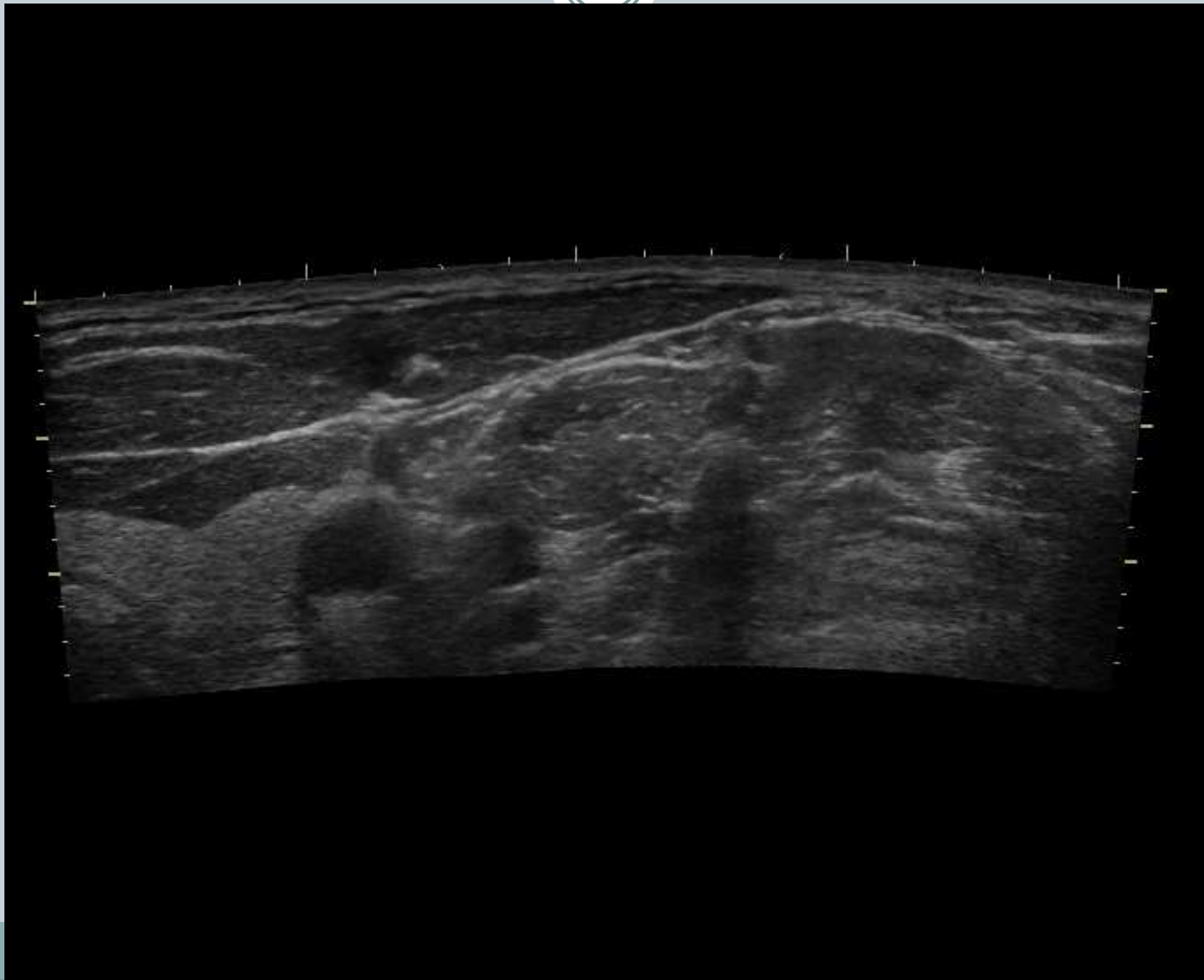
- NOM - N. OCCIPITALIS MINOR
- NAM - N. AURICULARIS MAGNUS
- NTC - N. TRANSVERSUS CERVICIS
- VTC - V. TRANSVERSA CERVICIS
- NLC - N. L. CERVICALES
- NDS - N. DORSALIS SCAPULAE
- NNSC - NN. SUPRACLAVICULARES
- NTL - N. THORACICUS LONGUS
- VIMO - VENTER INF. M. OMOHYOIDEI
- RS - R. SUPERFICIALIS (A. TRANSVERSAE CERVICIS)
- TTC - TRUNCUS THYROCERVICALIS
- ATI - A. THYROIDEA INF.
- ACA - A. CERVICALIS ASCENDENS
- ATC - A. TRANSVERSA CERVICIS
- RP - R. PROFUNDUS (A. TRANSVERSAE CERVICIS)
- ASS - A. SUPRASCAPULARIS
- VJI - V. JUGULARIS INTERNA
- DT - DUCTUS THORACICUS
- VS - V. SUBCLAVIA
- NP - N. PHRENICUS
- AS - A. SUBCLAVIA
- MSA - M. SCALENUS ANT.
- NLSC - N. L. SUPRACLAVICULARES

[www.usra.ca](http://www.usra.ca)



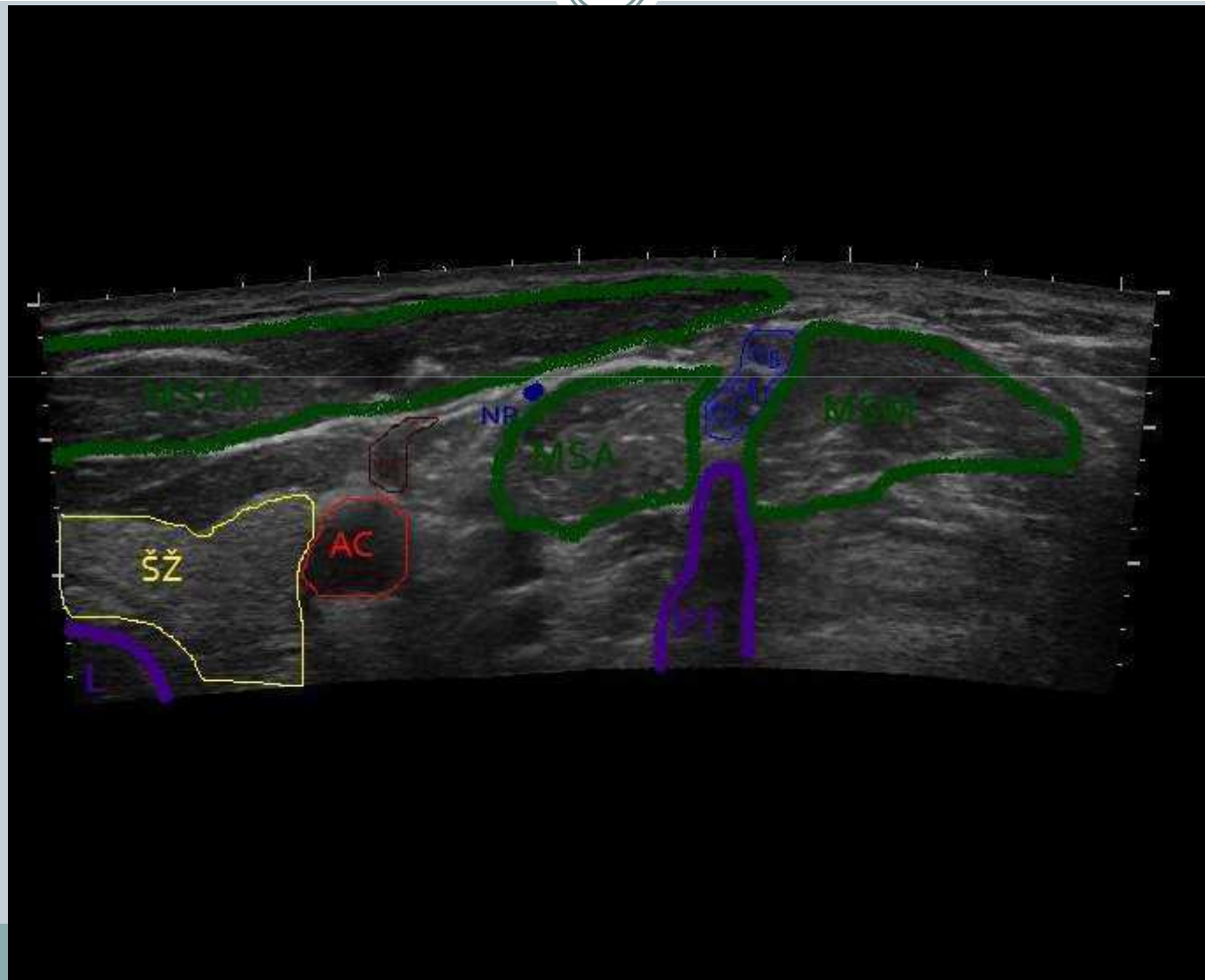


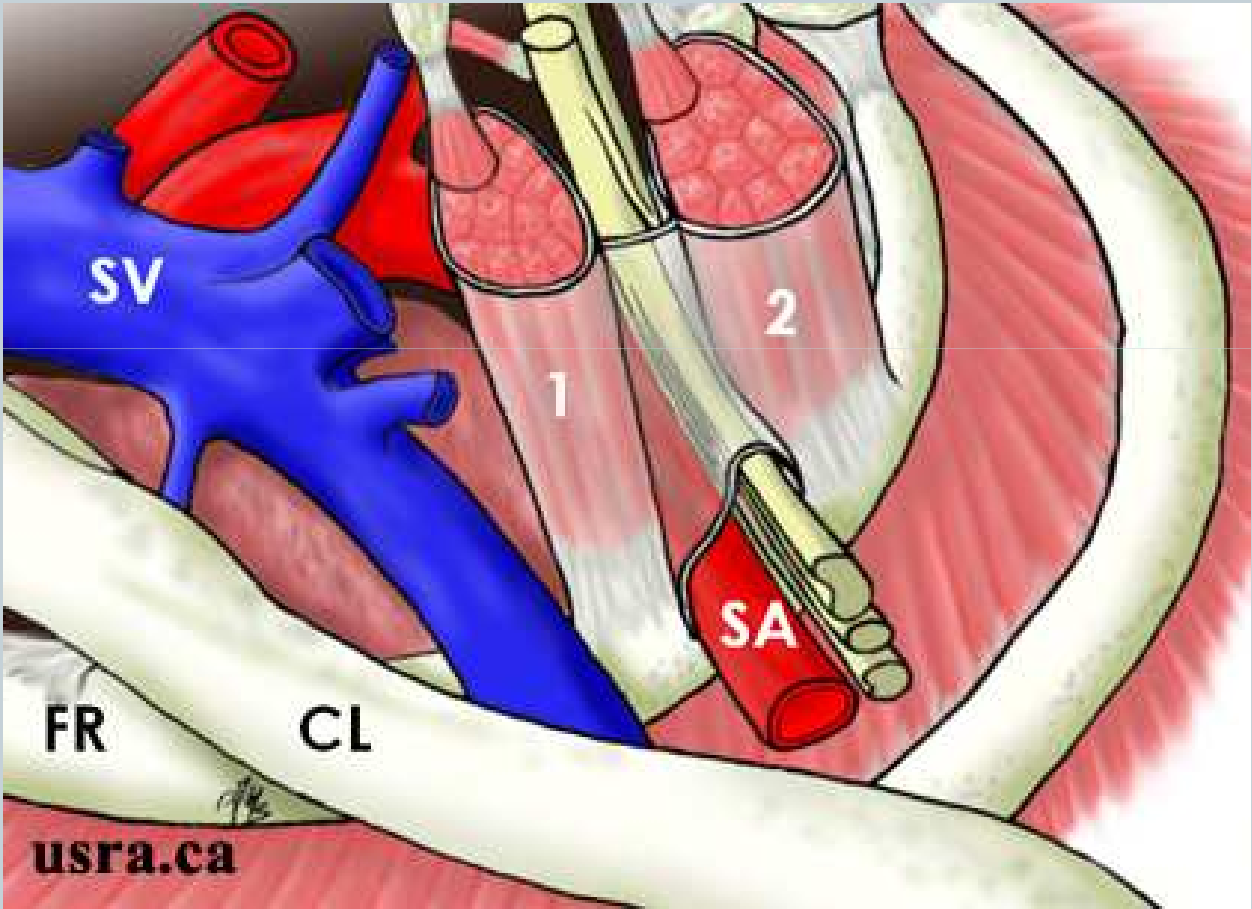
# Panoramatické UZ „interskalenické oblasti“



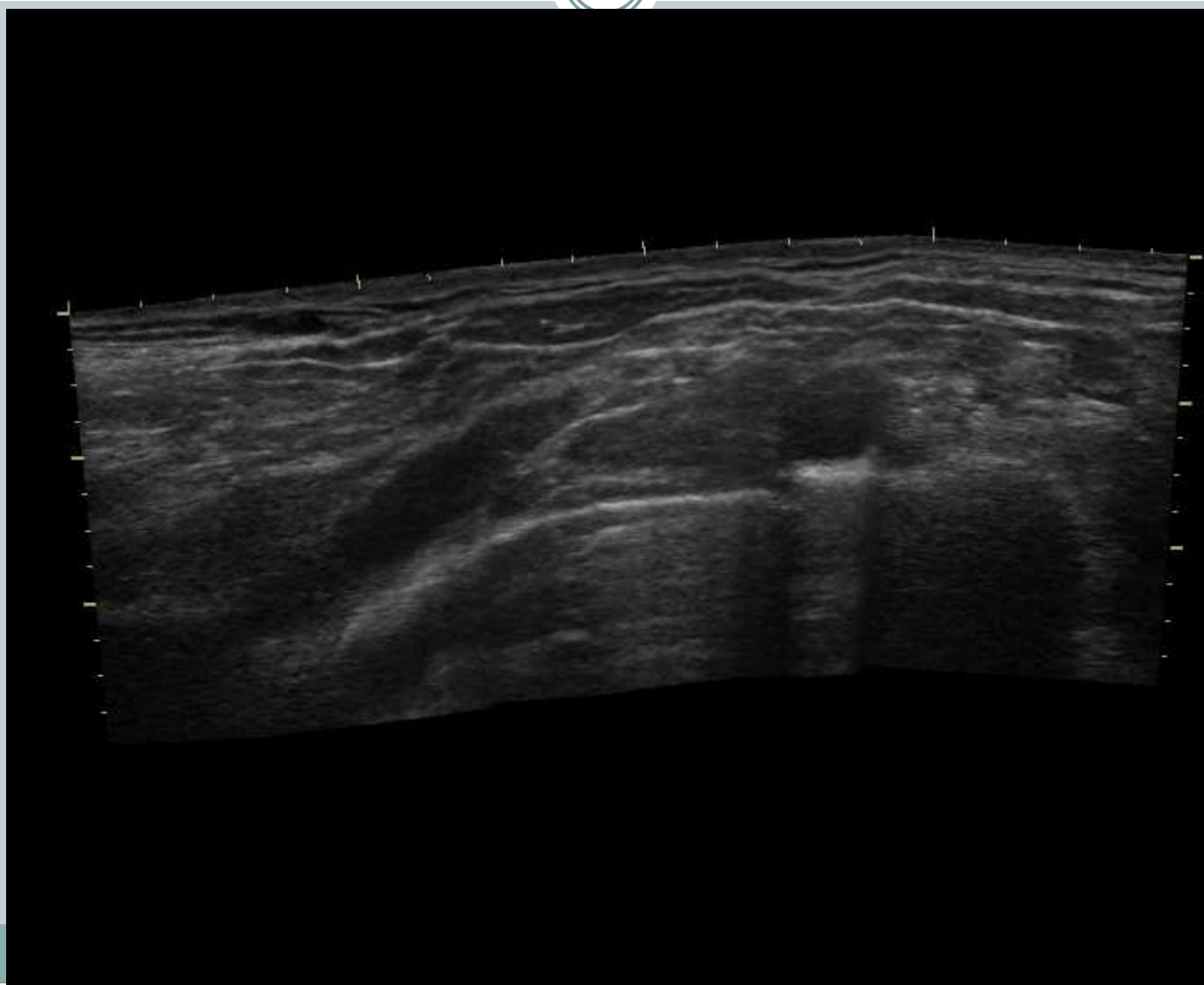


# Panoramatické UZ „interskalenické oblasti“

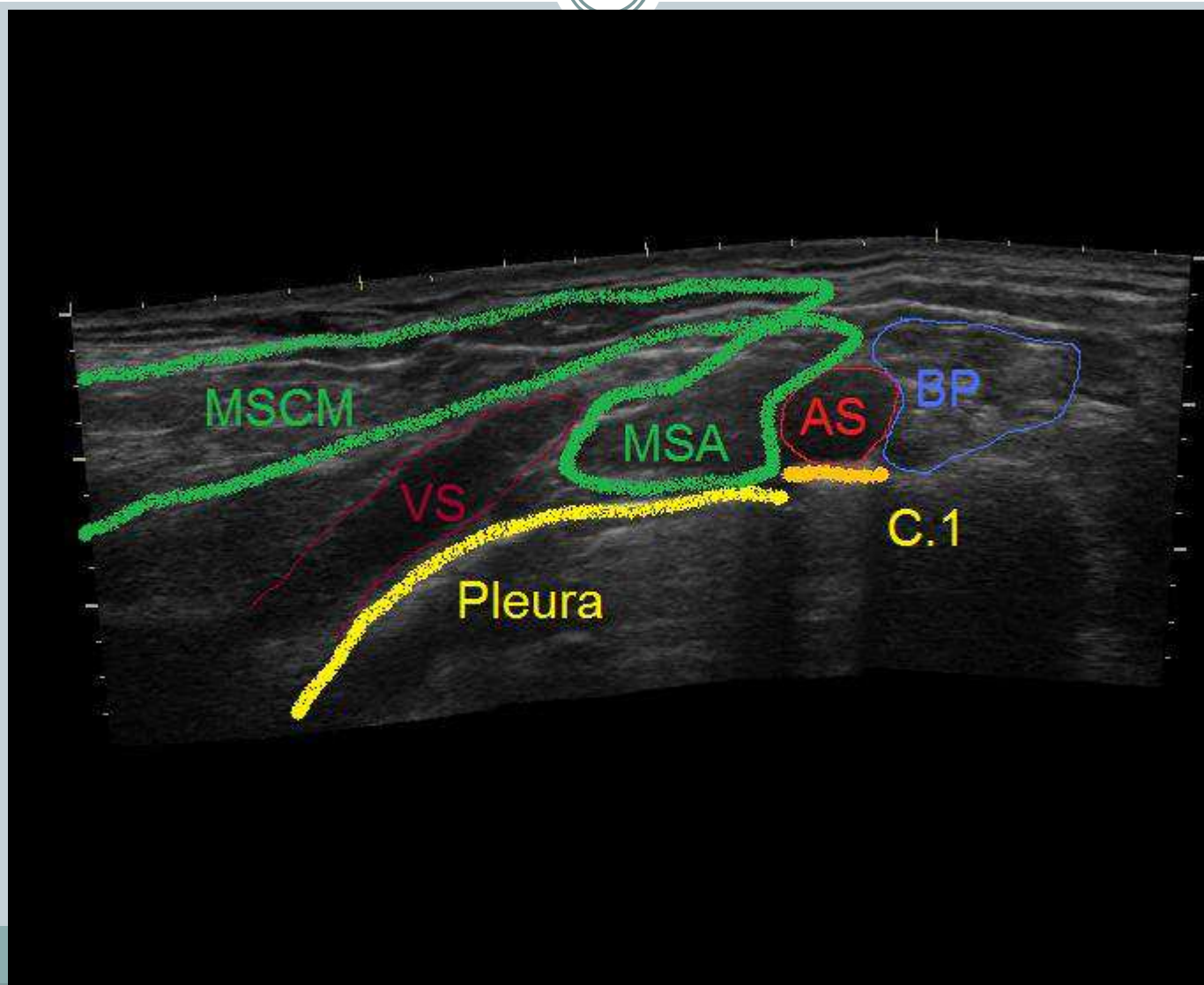




# Panoramatické UZ „supraklavikulární oblasti“



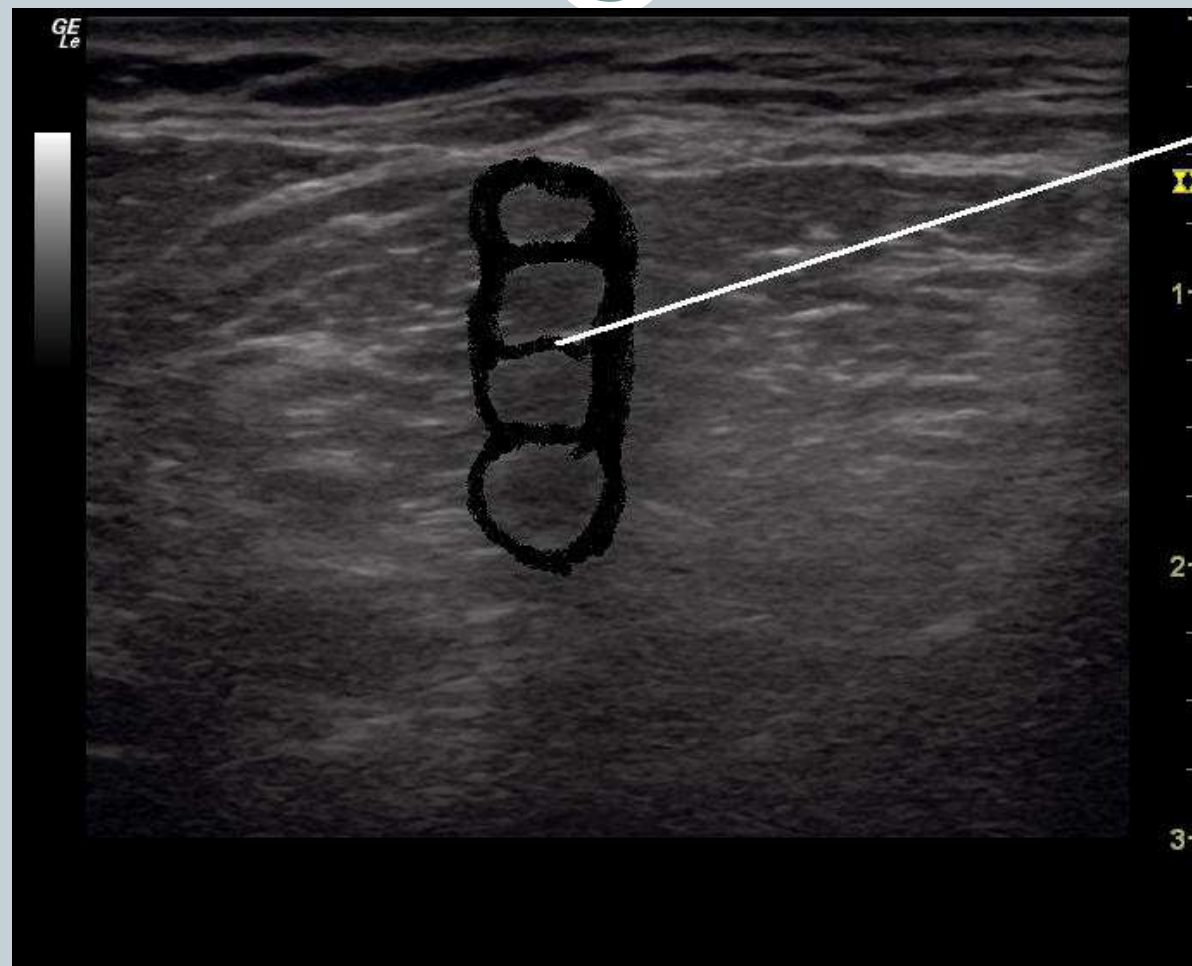
# Panoramatické UZ „supraklavikulární oblasti“



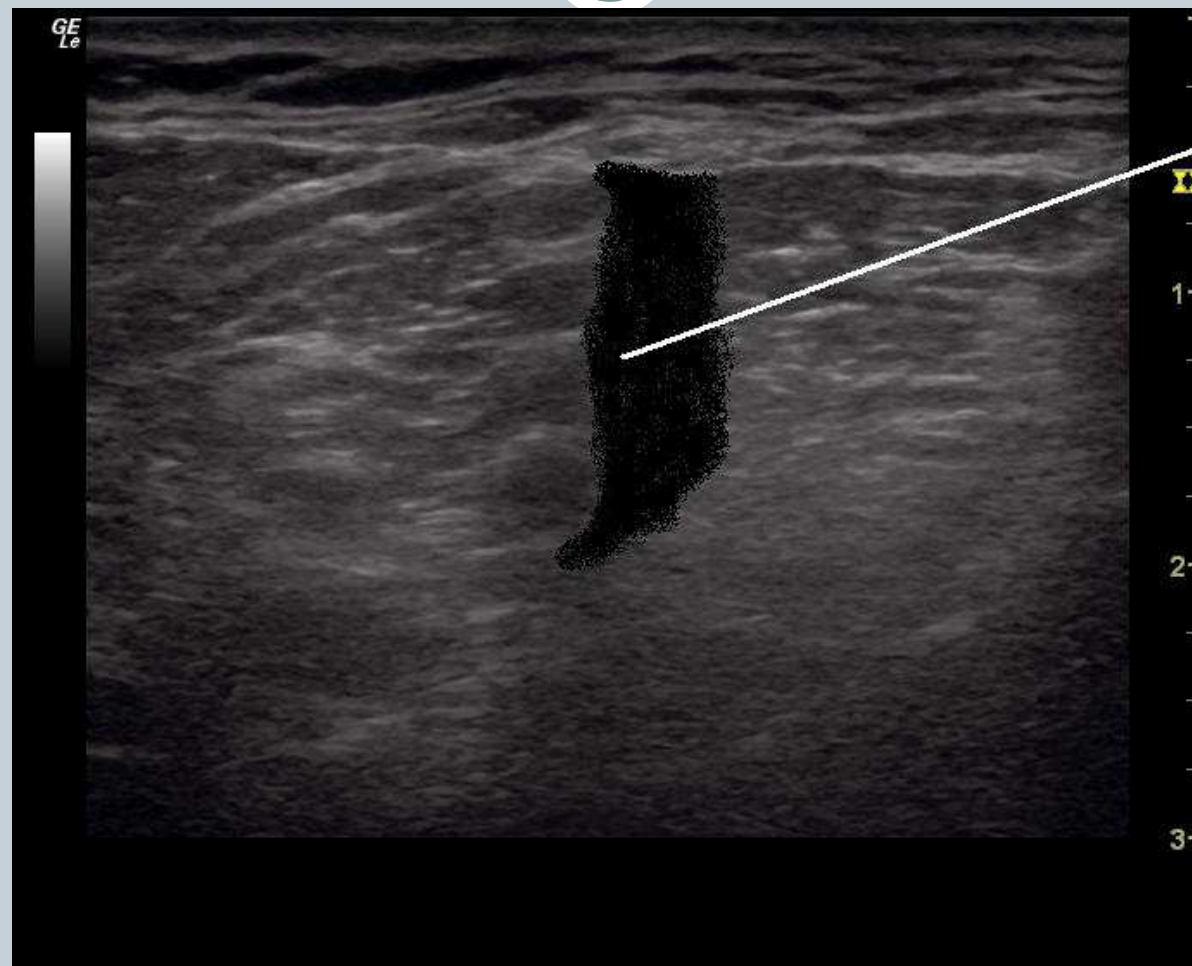
# Interskalenická blokáda



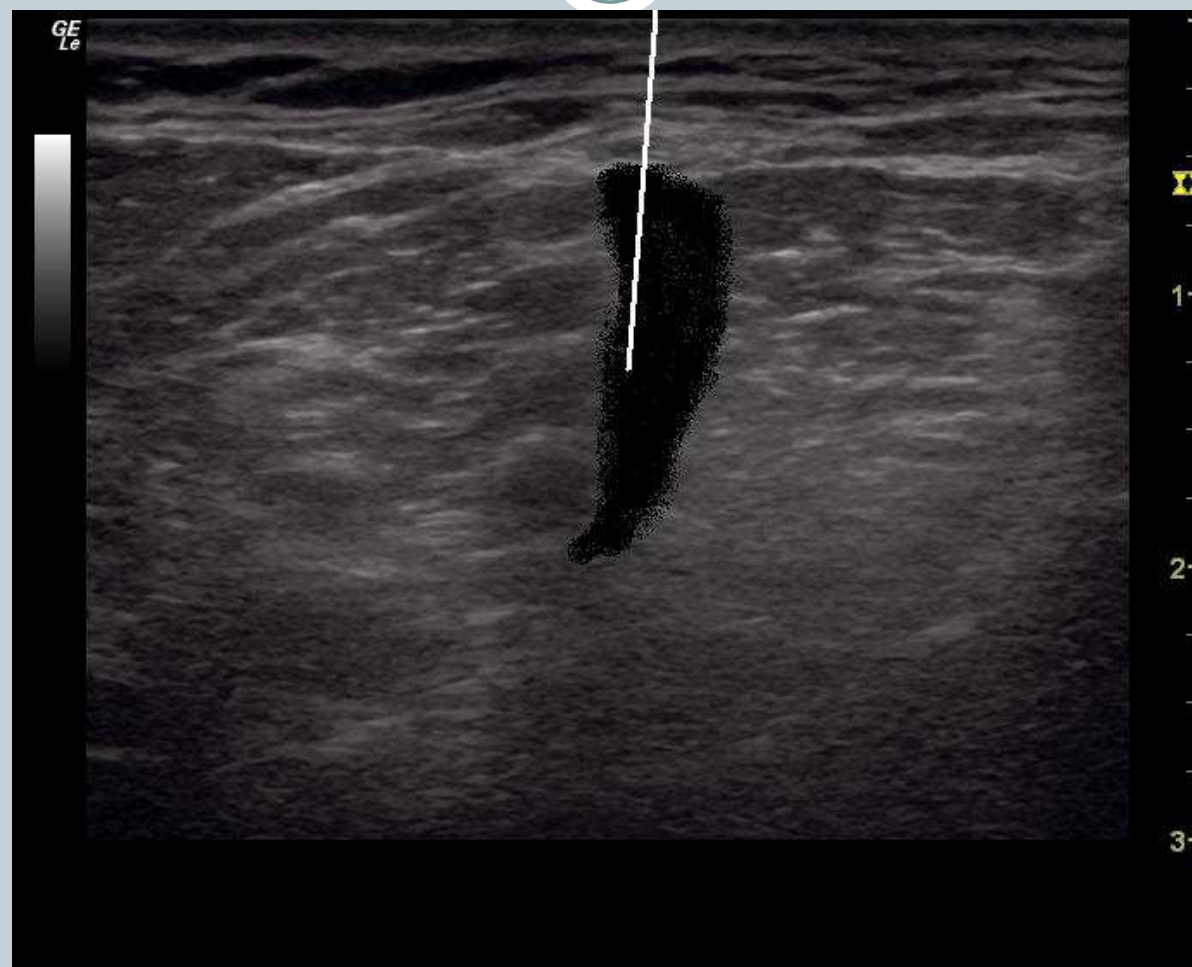
# Interskalenická blokáda- posterolaterální přístup in plane- low volume



# Interskalenická blokáda- posterolaterální přístup in plane



# Interskalenická blokáda-out of plane kontinuální techniky

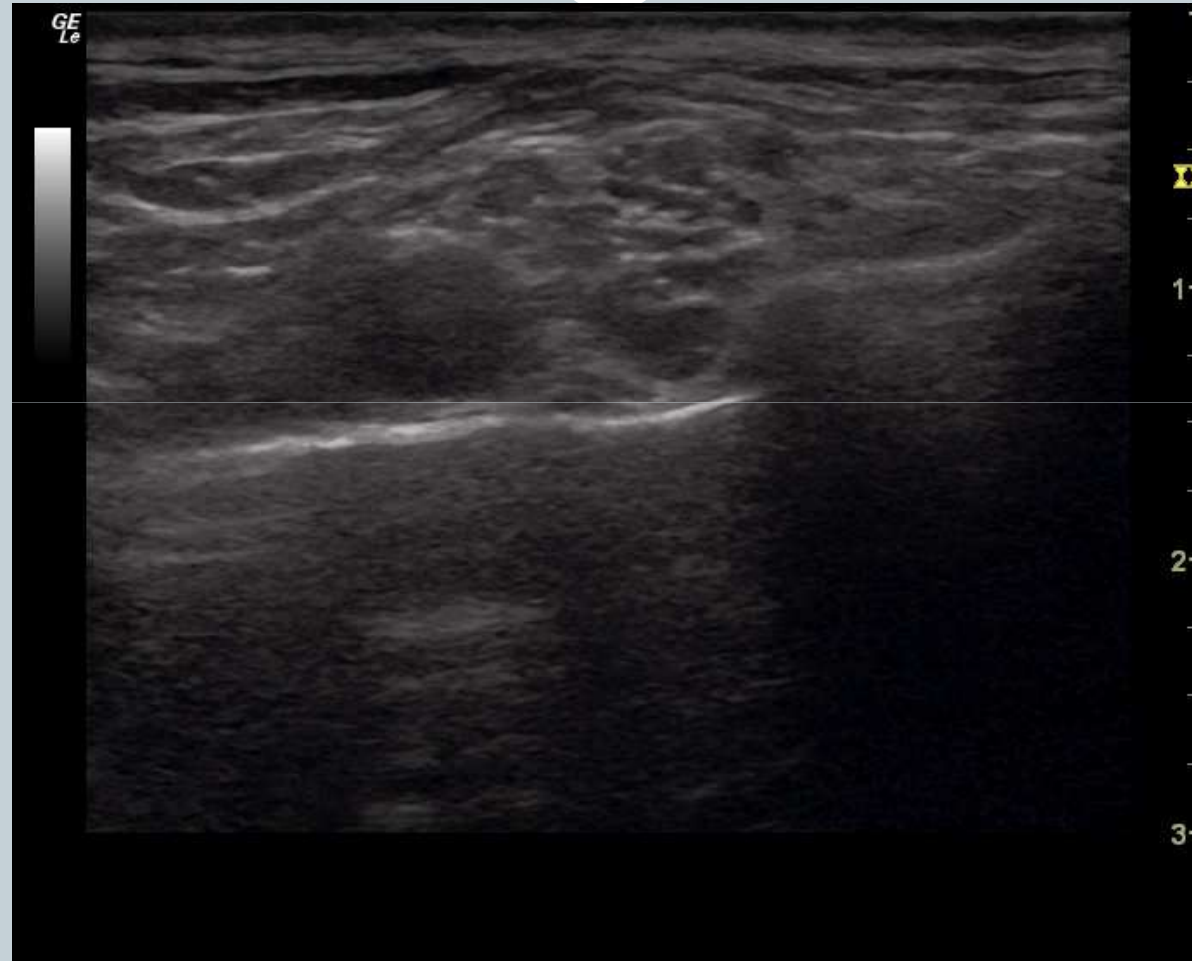




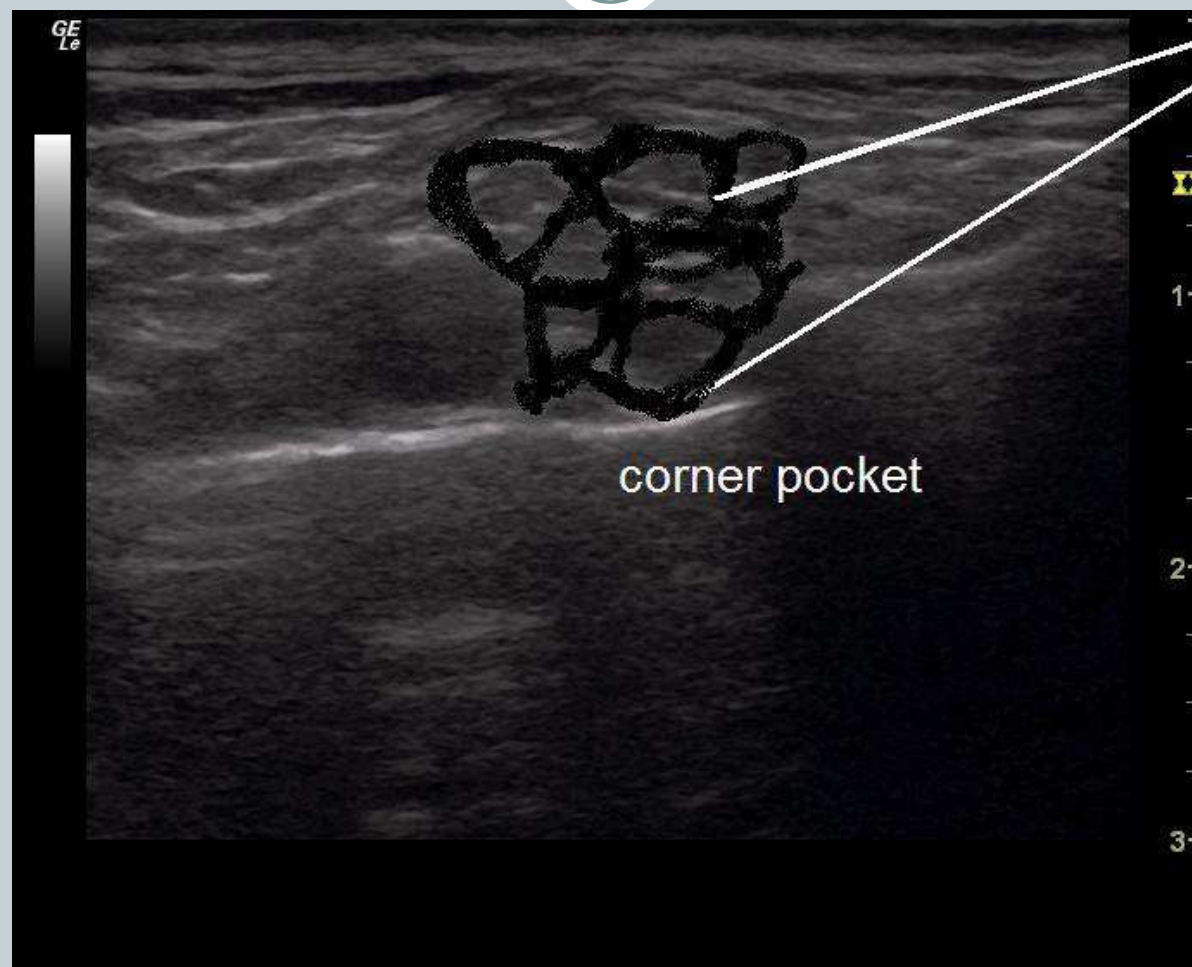
# Interskalenická blokáda-out of plane



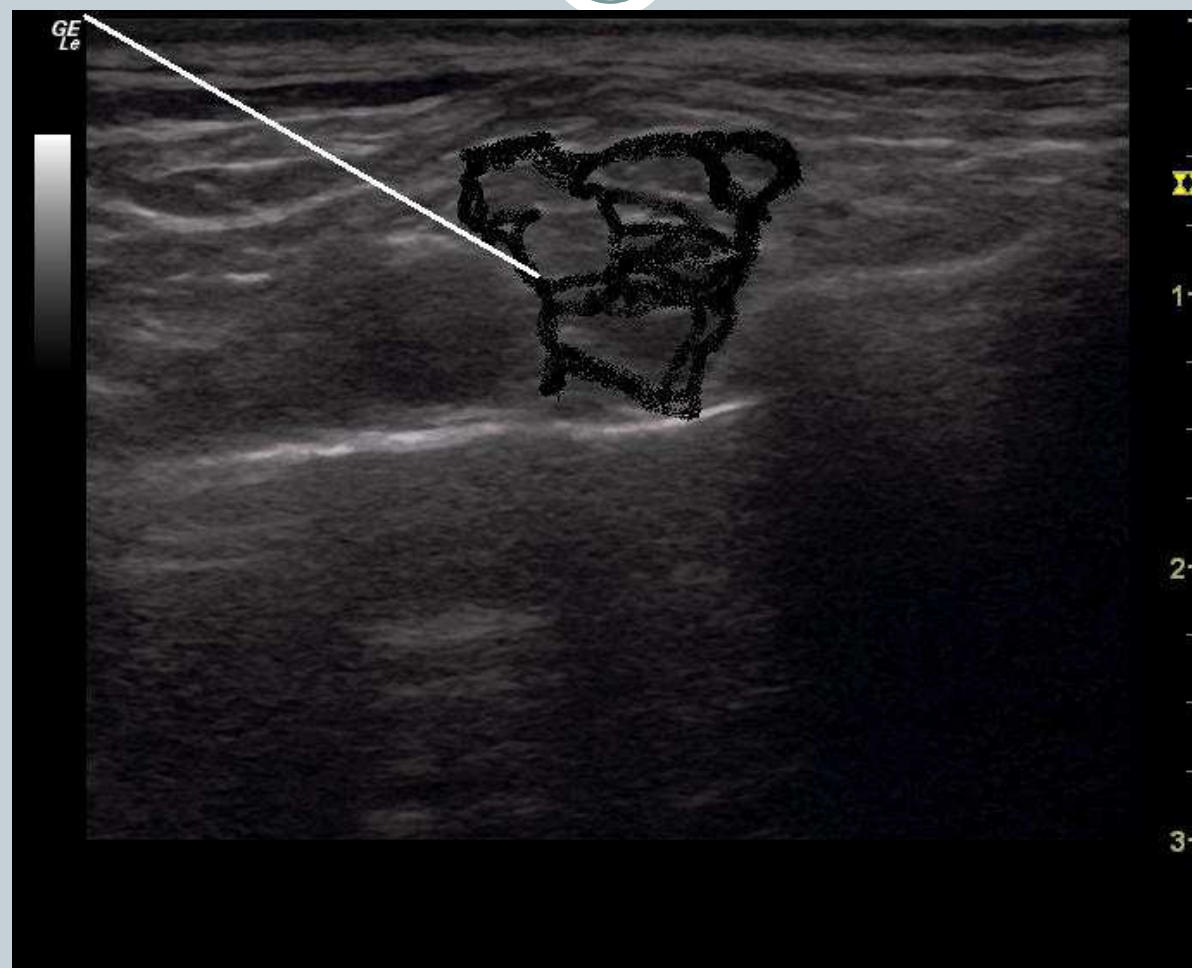
# Supraklavikulární blokáda



# Supraklavikulární blokáda- latero-mediální přístup



# Supraklavikulární blokáda- medio-laterální přístup-kontinuální techniky



# Supraklavikulární blokáda špatné šíření LA

