

Co chce otorinolaryngolog od radiologa

ŠTEFFL M.

ORL ODD. FN BRNO BOHUNICE

Zásadní zlomy v léčení nemocí PND

DIAGNOSTIKA :

- CT
- MRI

CHIRURGICKÁ LÉČBA:

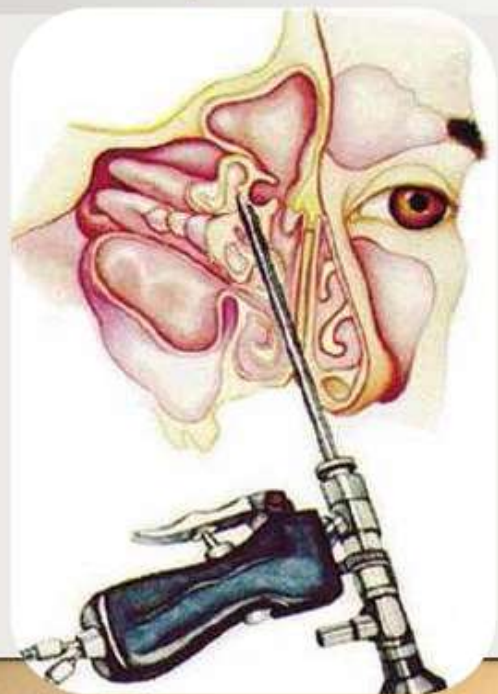
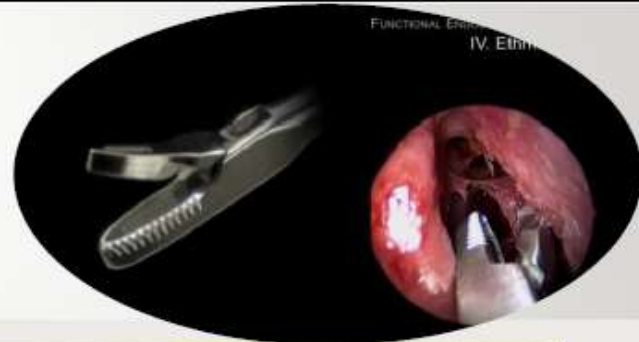
- FESS (FES) = FUNCTIONAL ENDOSCOPIC SINUS SURGERY
- Navigovaná chirurgie

MEDIKAMENTÓZNÍ LÉČBA:

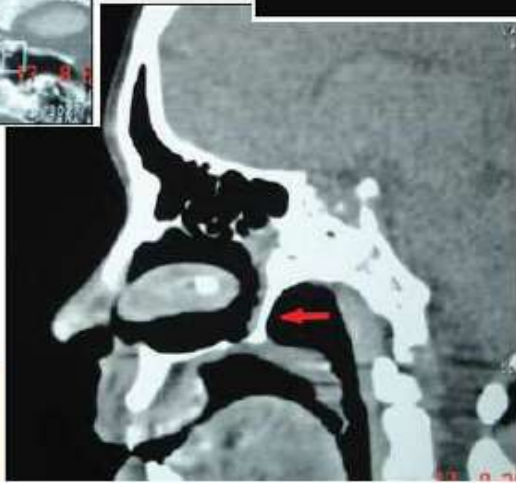
- Steroidy - topické



FESS – endonazální chirurgie



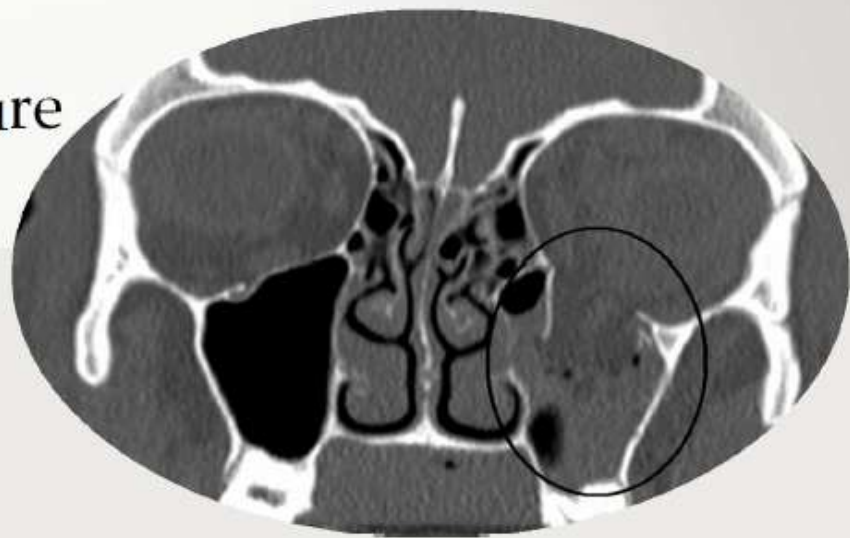
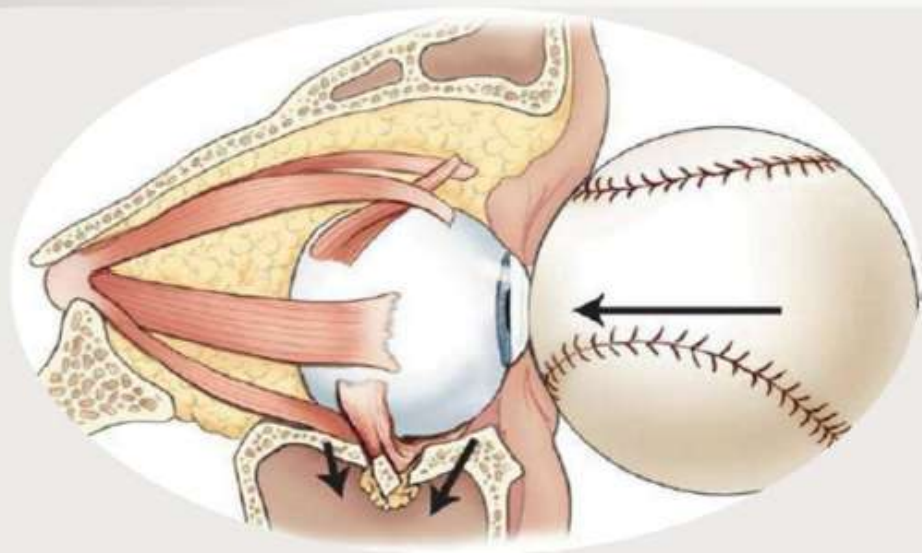
Vrozené vady – atrezie choan



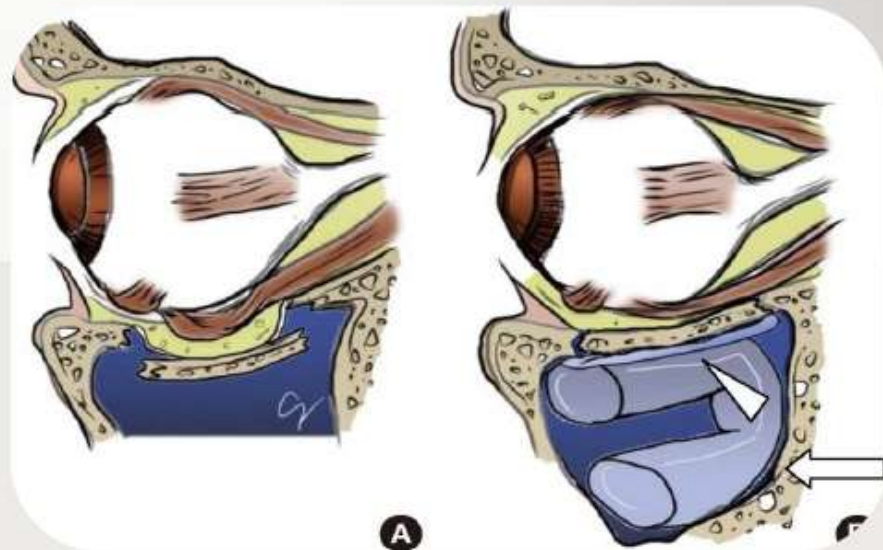
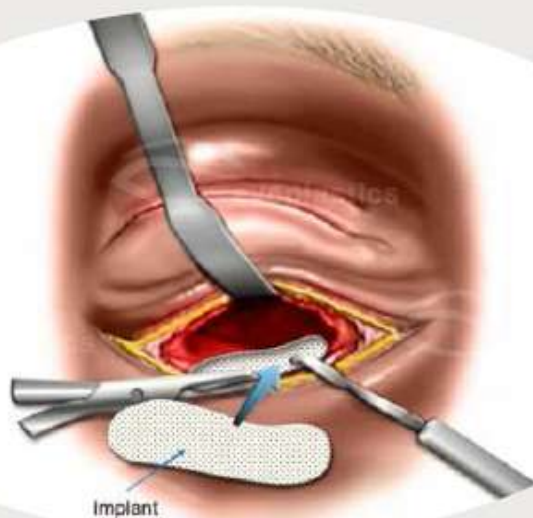
Vrozené vady – atrezie choan



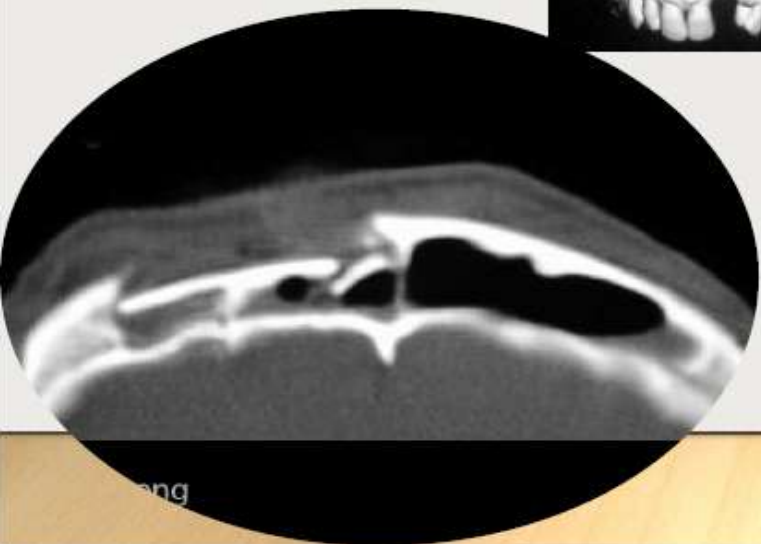
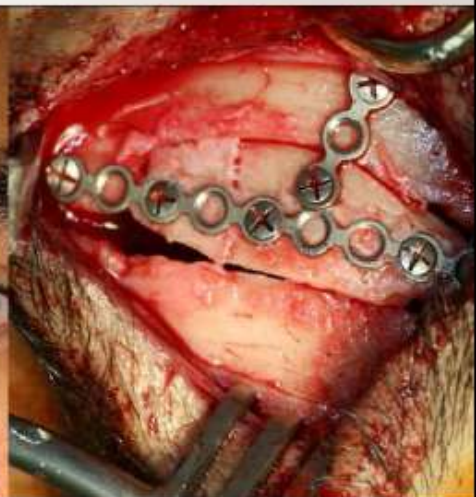
Traumata – blow out fracture



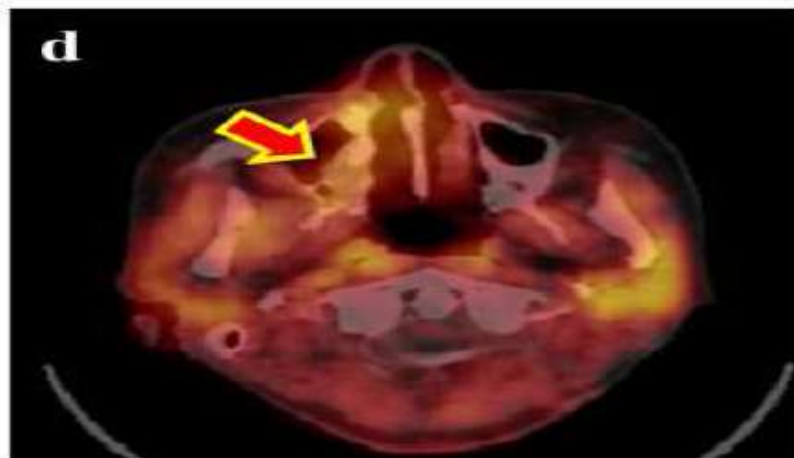
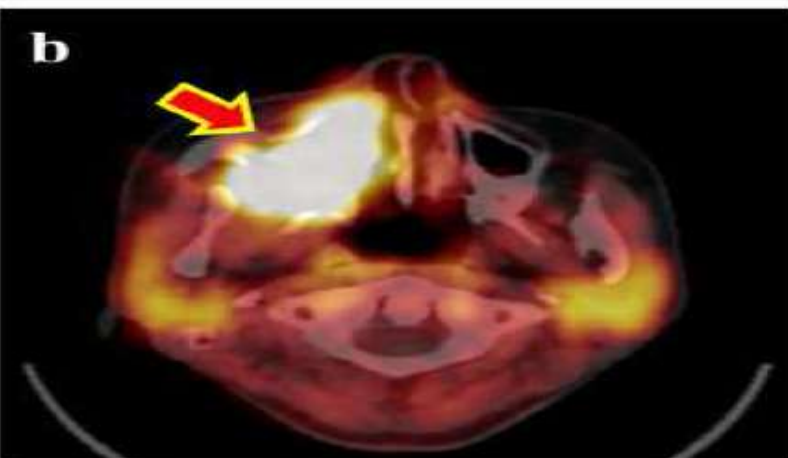
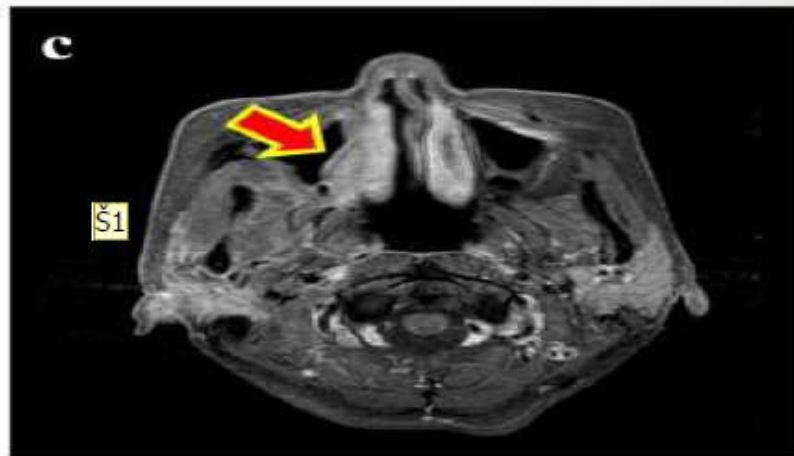
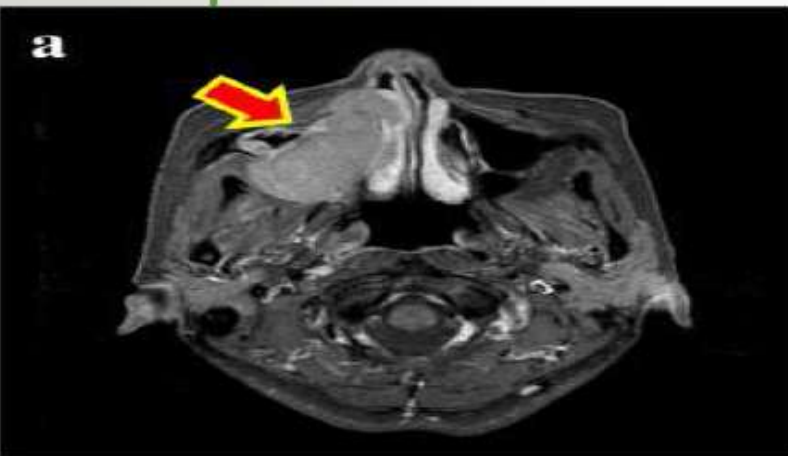
Traumata – blow out fr.



Traumata



Nádory

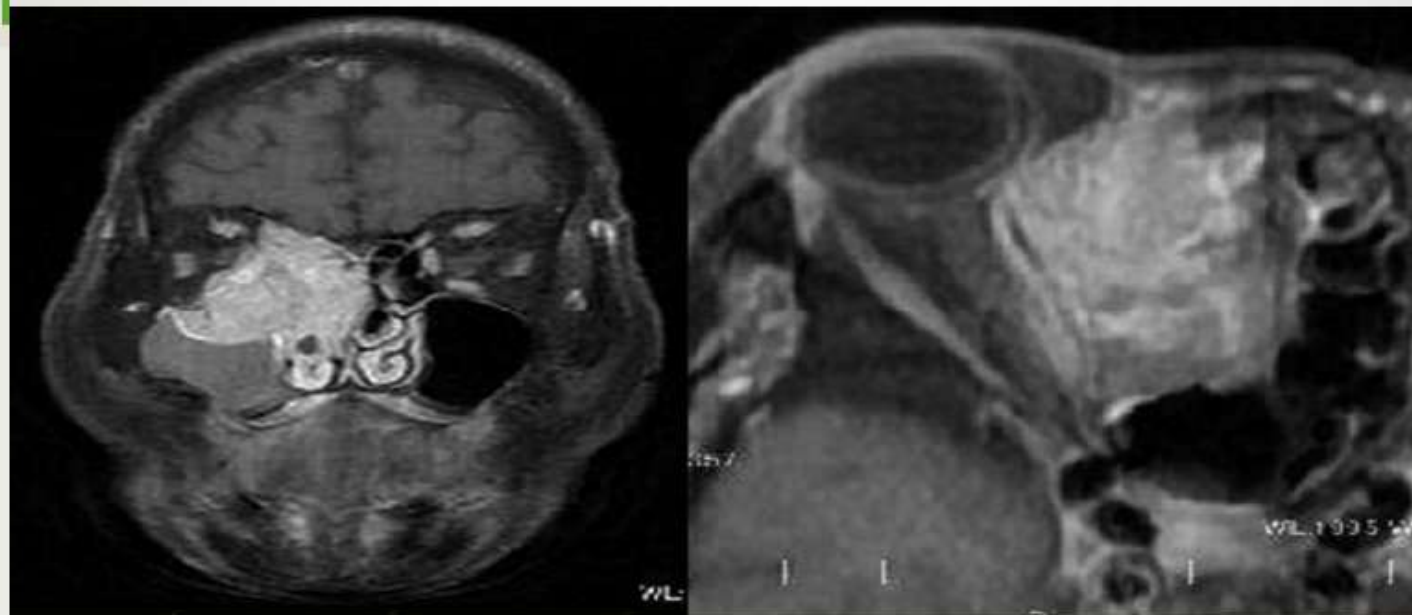


Nádory



Helen Bulhart Just Giving

Nádory



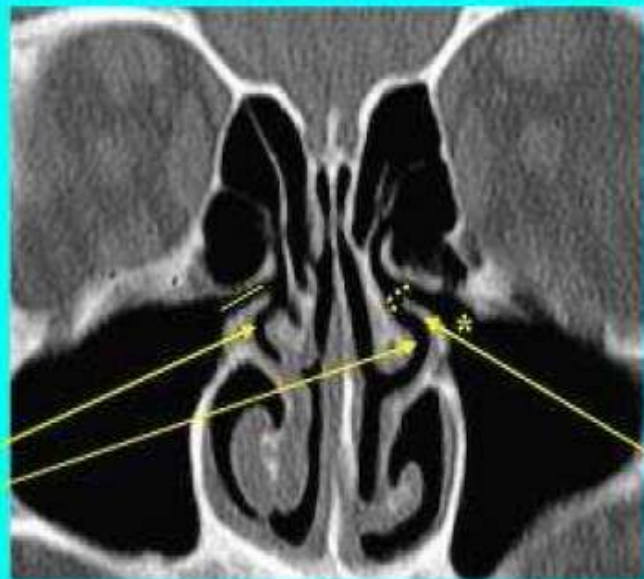
Nádory



Ostiomeatální komplex

NORMAL ANTERIOR OSTIOMEATAL COMPLEX

Solid yellow--
ethmoid
infundib.
joining
maxillary
ostia



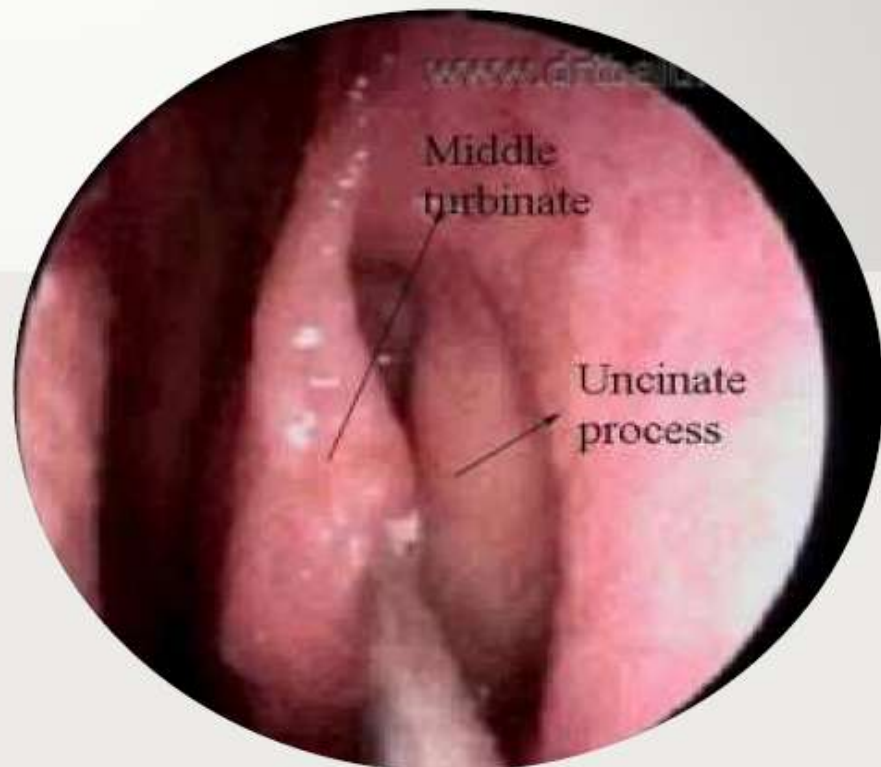
Dotted
yellow--
semilunar
hiatus

Middle
meatus

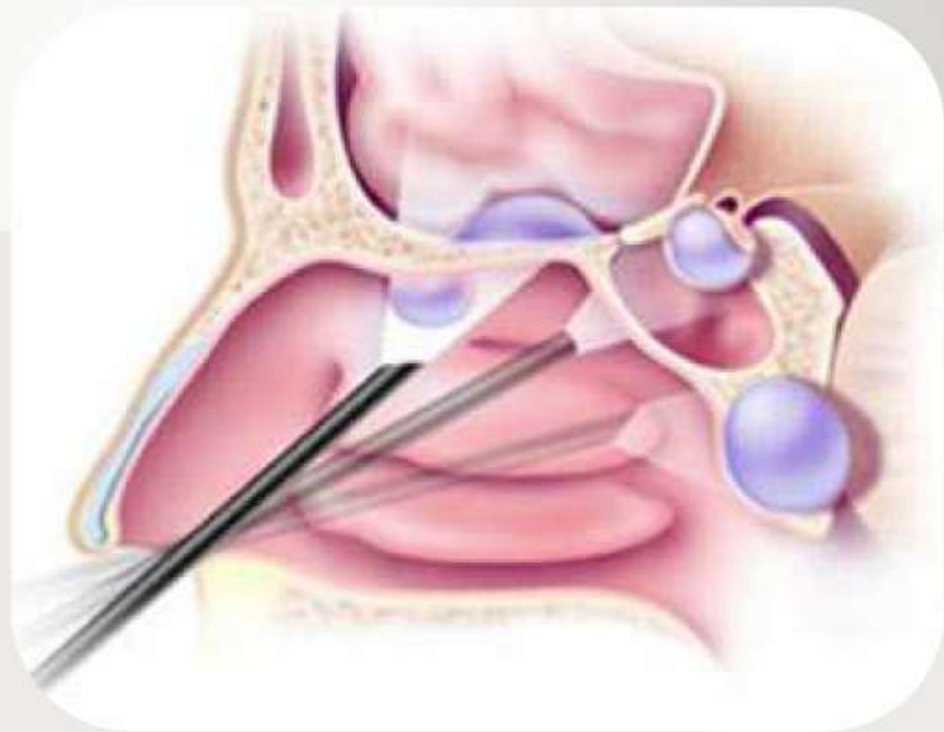
Uncinate
process

FIGURE

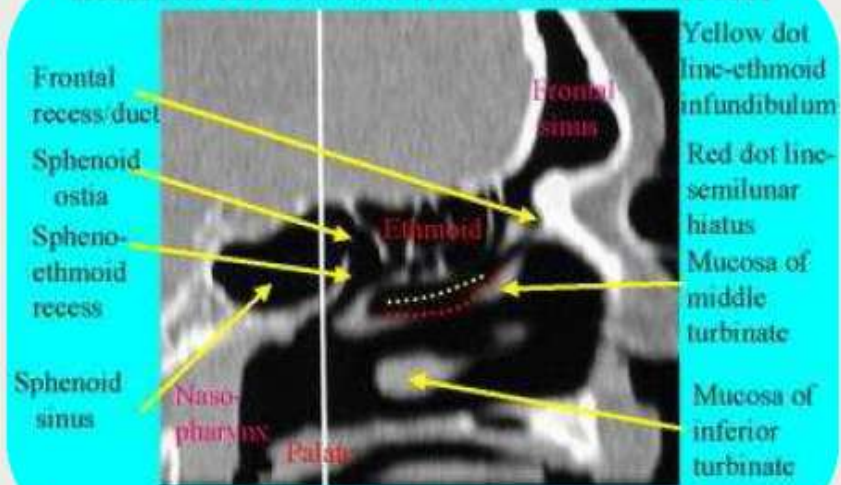
* Maxillary ostia



Sagitální rekonstrukce Advanced FESS

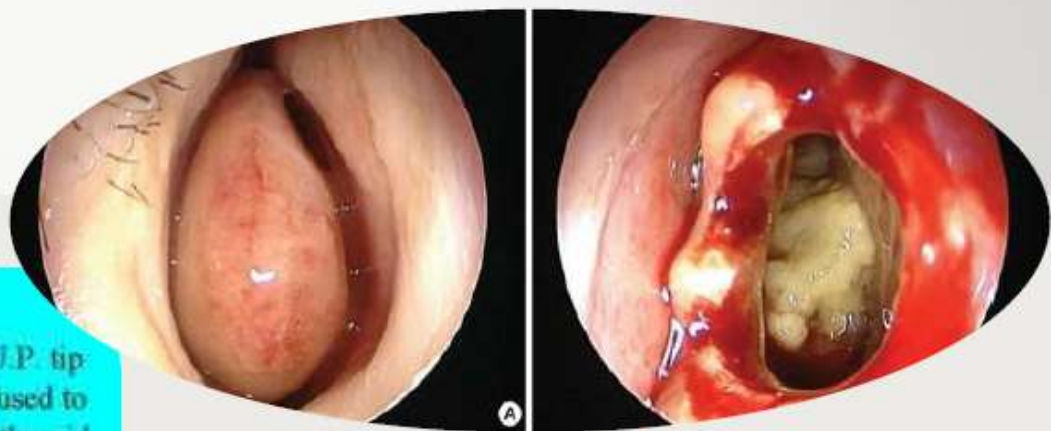


SAGITTAL RECONSTRUCTION--NORMAL ANATOMY

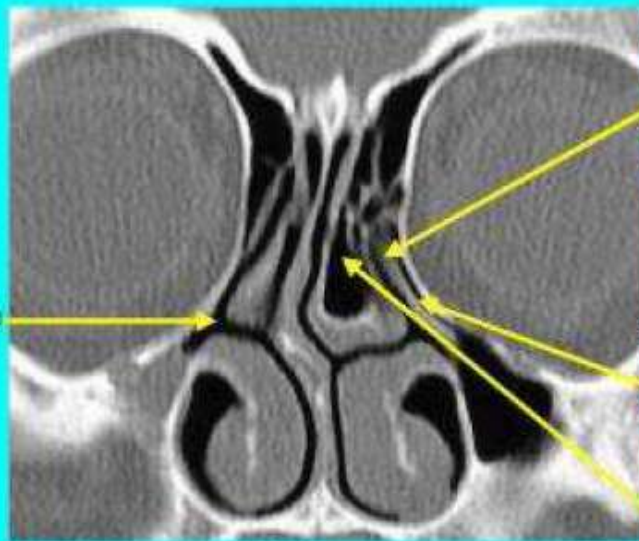


FIGURE

Concha bulosa



CONCHA BULLOSA MIDDLE TURBINATE



U.P. tip fused to ethmoid floor

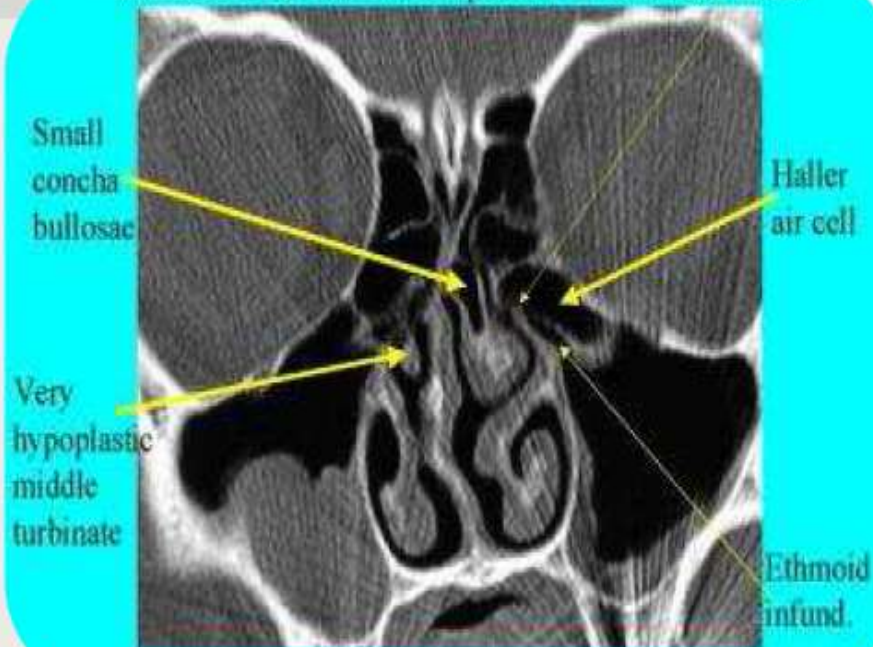
Absence of uncinate process

Narrowed ethmoid infund.
Concha bullosa

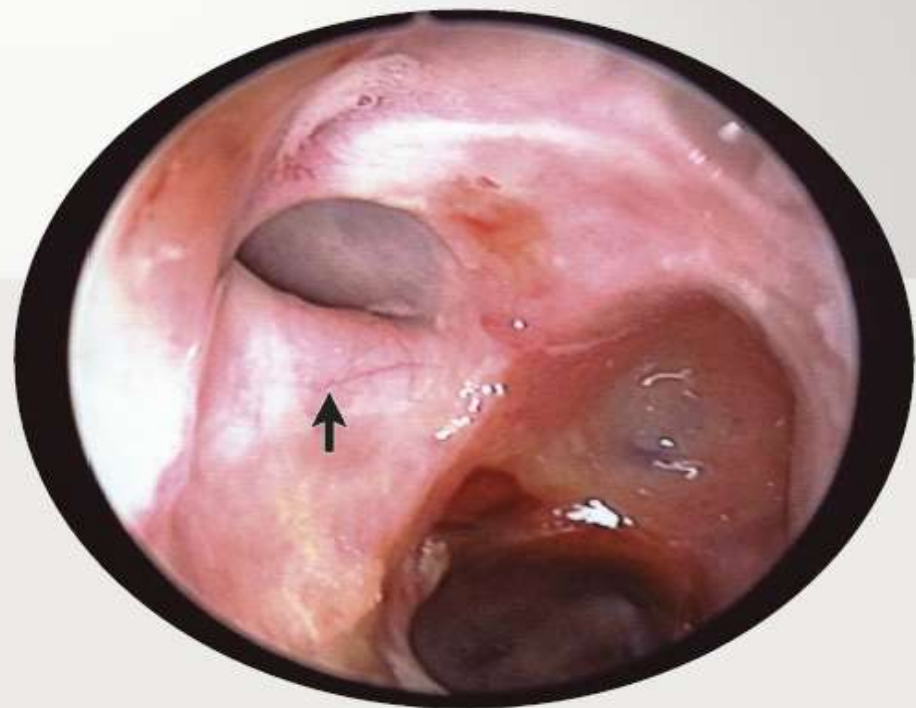
FIGURE

Atypické ethmoidy

HALLER AIR CELL--Compromise of semilunar hiatus

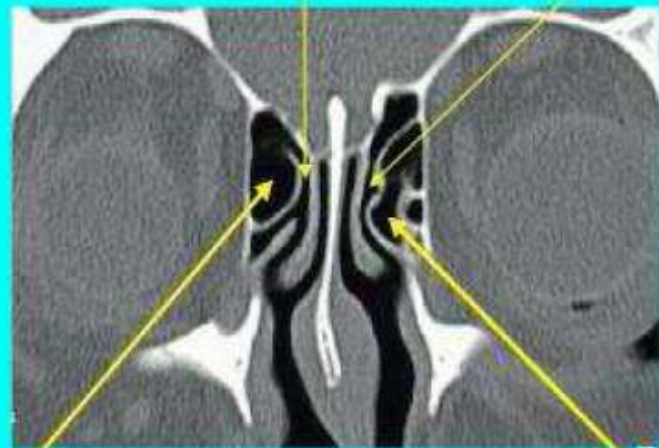


FIGURE



Frontální sinotomie

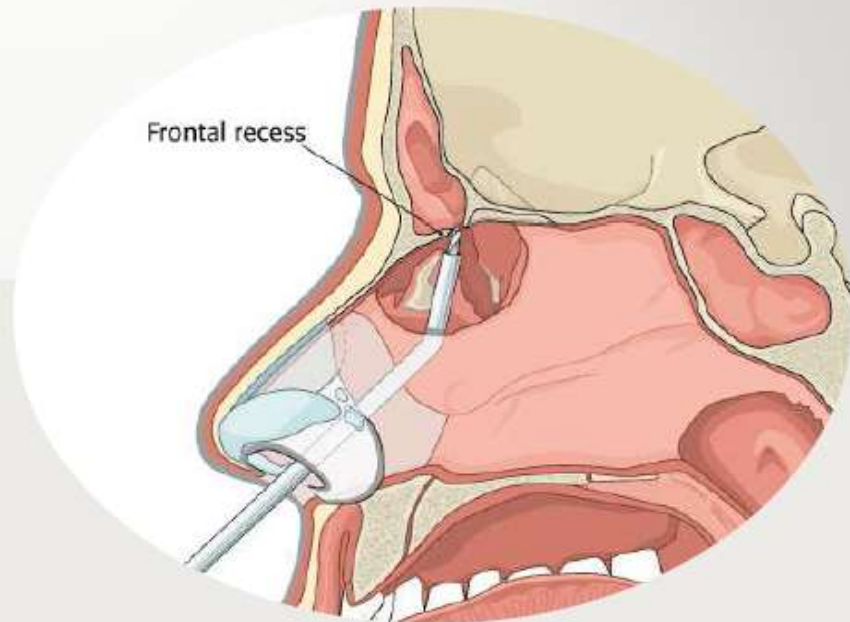
NORMAL FRONTAL RECESS/DUCT



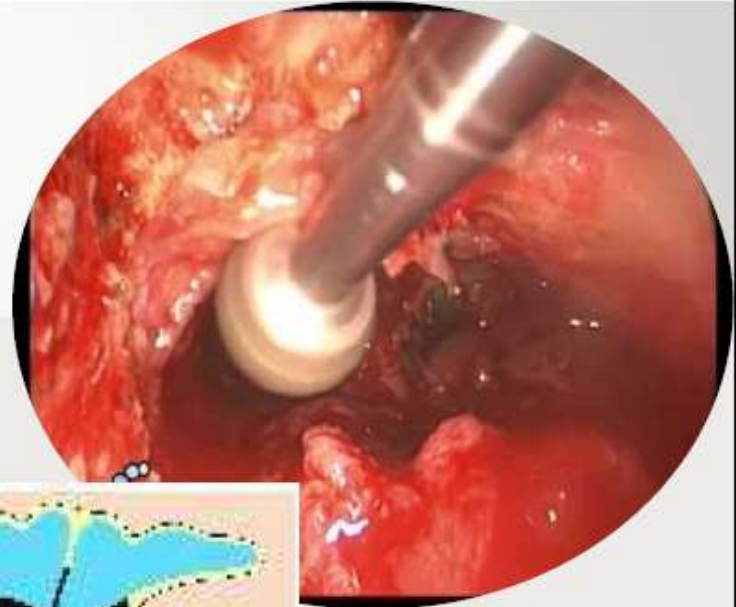
Agar
nasi cells

Agar
nasi cells

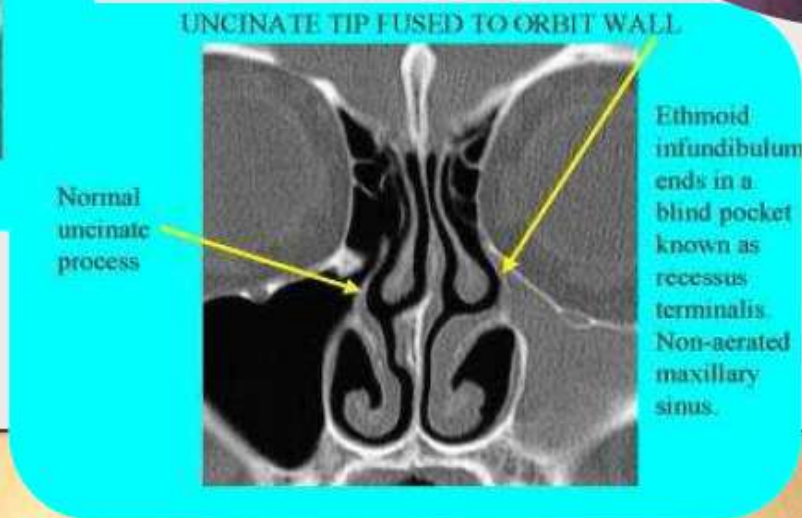
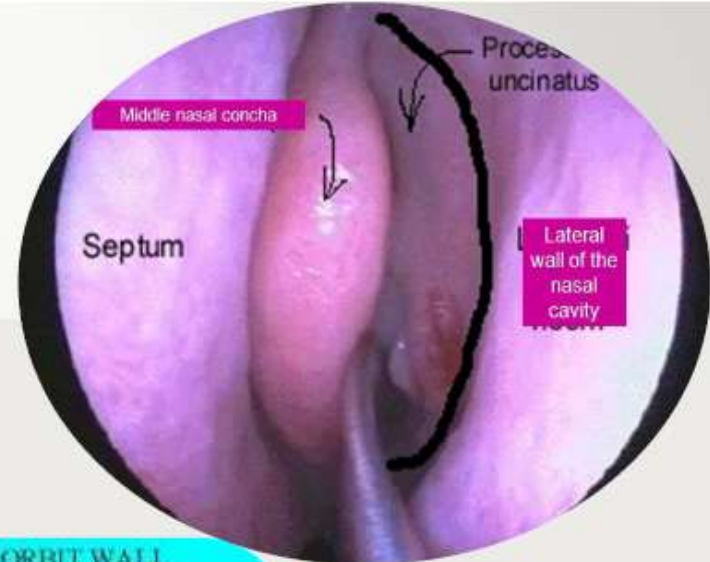
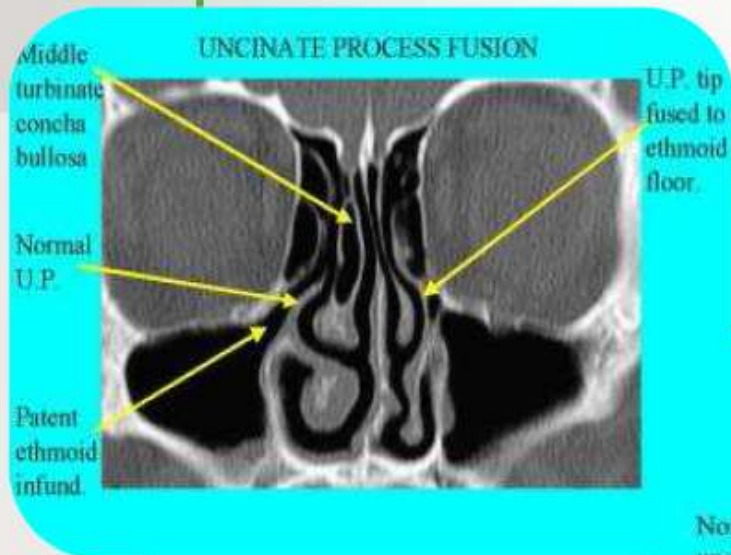
Frontal recess



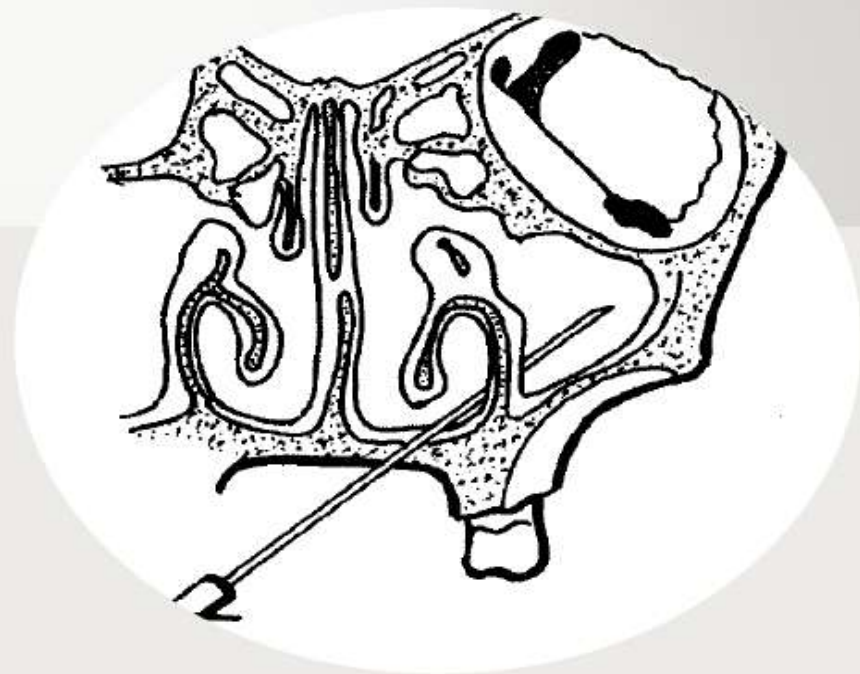
Frontální sinotomie



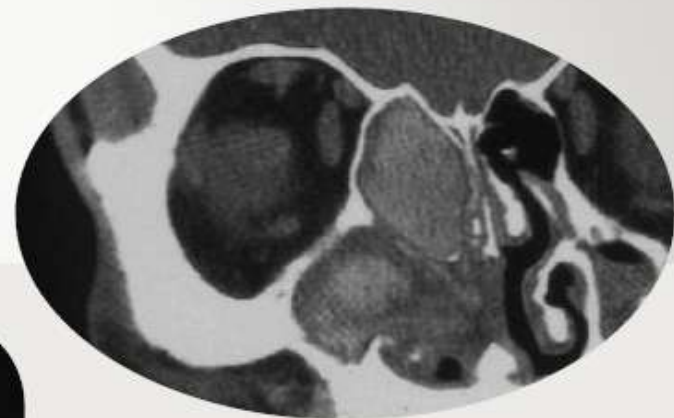
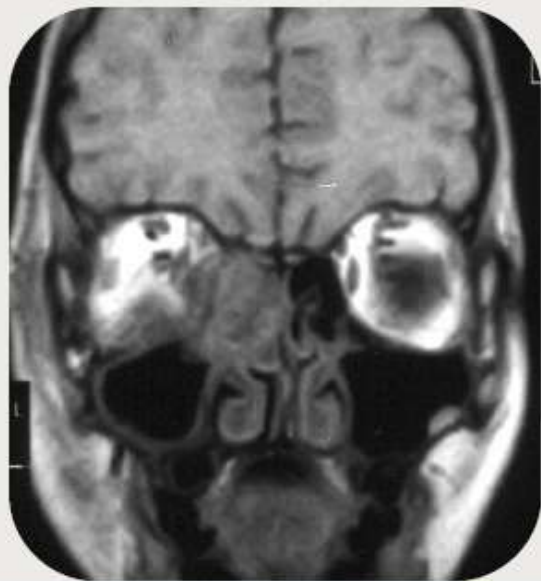
Proc. uncinatus



Sinusitida



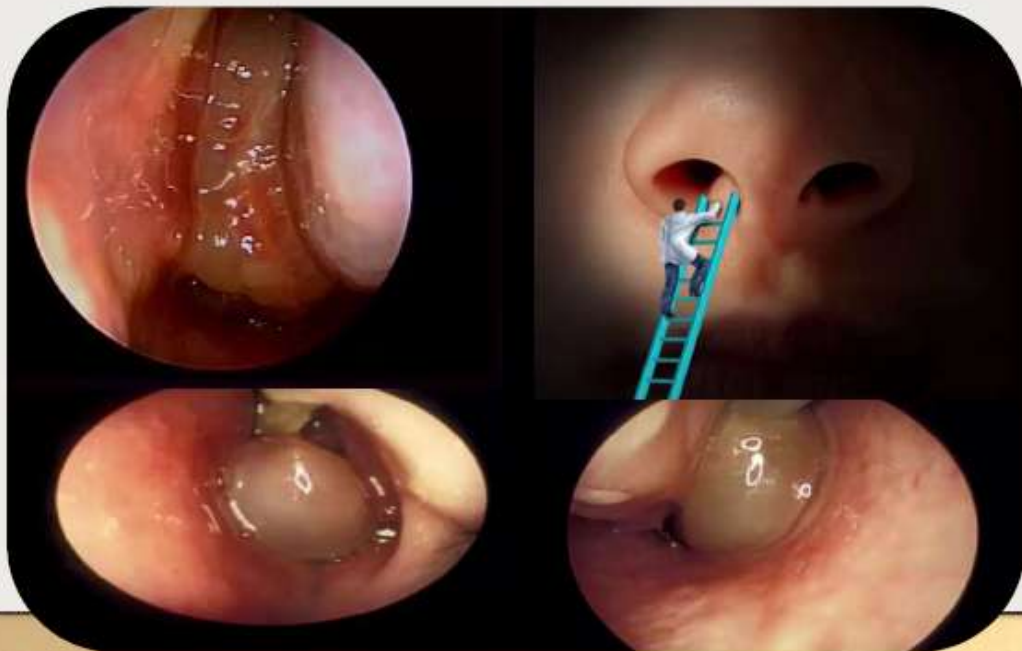
Sinusitida, komplikace



Cysta maxilární dutiny



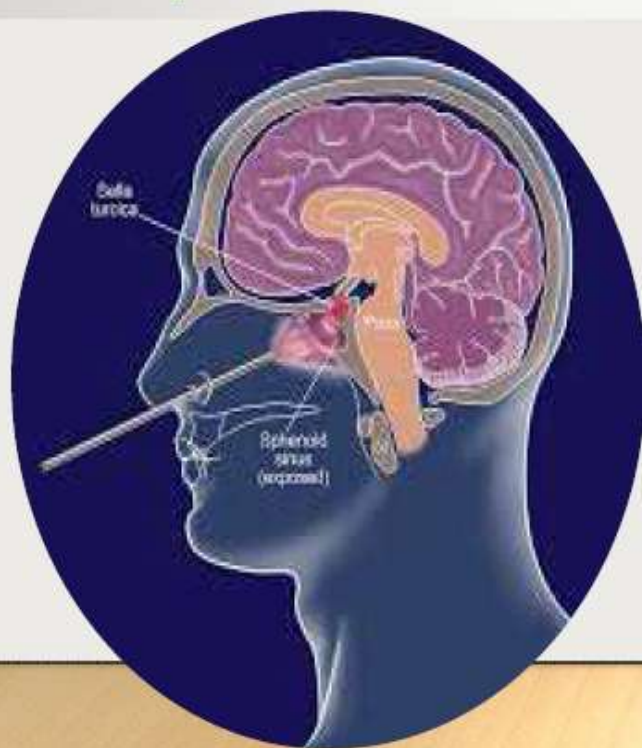
Nosní polypy



Stav po FESS



Endonazální endoskopická hypofizektomie





V MINULOSTI





01/21/02

2 05 7

ORL

FN BRNO-BOHUNICE