

Klinika radiologie a nukleární medicíny LF MU a Fakultní nemocnice Brno

pořádá



VI. KONGRES TRAUMATOLOGIE A MUSKULOSKELETÁLNÍ RADIOLOGIE

12. – 13. dubna 2018, Brno, hotel Myslivna

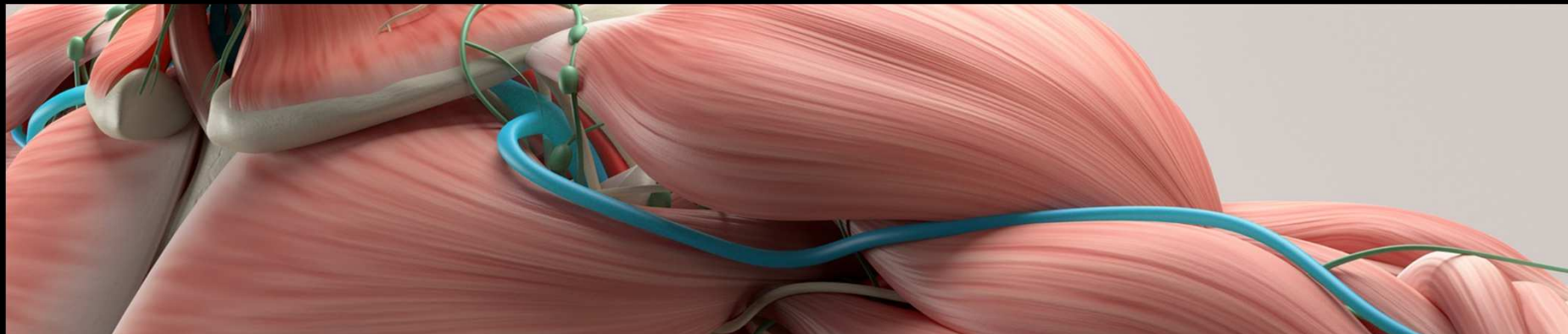


TRAUMA RAMENNÍHO KLOUBU

Vojtaník Pavol

KLINIKA ÚRAZOVÉ CHIRURGIE FN A MU BRNO





TRAUMA RAMENNÍHO KLOUBU

Vojtaník Pavol

KLINIKA ÚRAZOVÉ CHIRURGIE FN A MU BRNO



RAMENNÍ KLOUB

- ROZSAH POHYBU

STABILITA



- HLAVICE : GLENOID !!! POVRCH 4 : 1 !!!



NESTABILITA



STABILIZUJÍCÍ STRUKTURY

STATICKÉ

GLENOHUMERÁLNÍ LIGAMENTA - IGHL

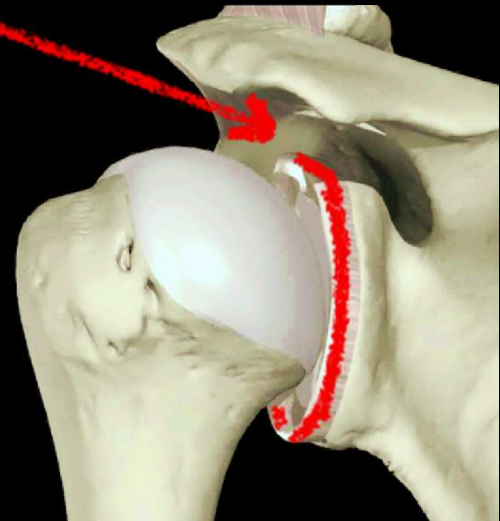
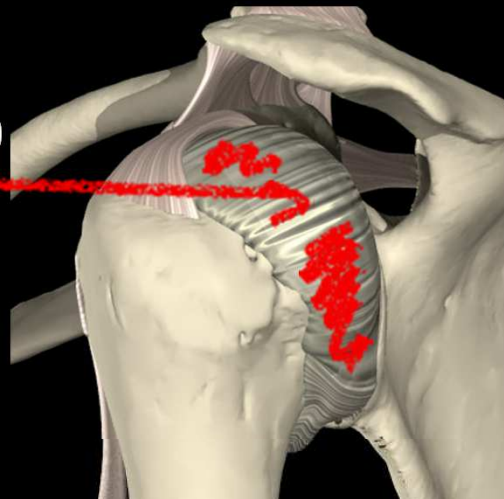
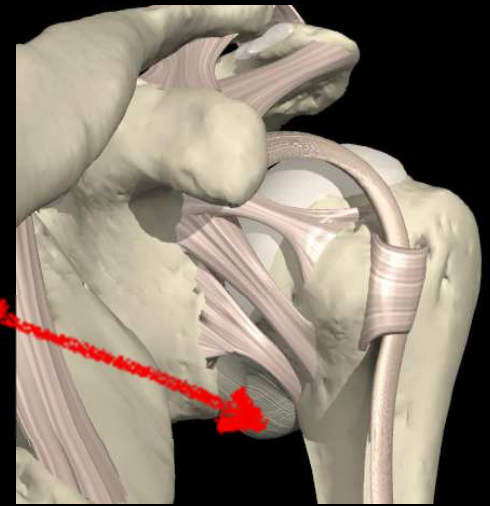
LABRUM GLENOIDALE 50%

ZVĚTŠÍ PLOCHU

KLOUBNÍ POUZDRO

NEGATIVNÍ

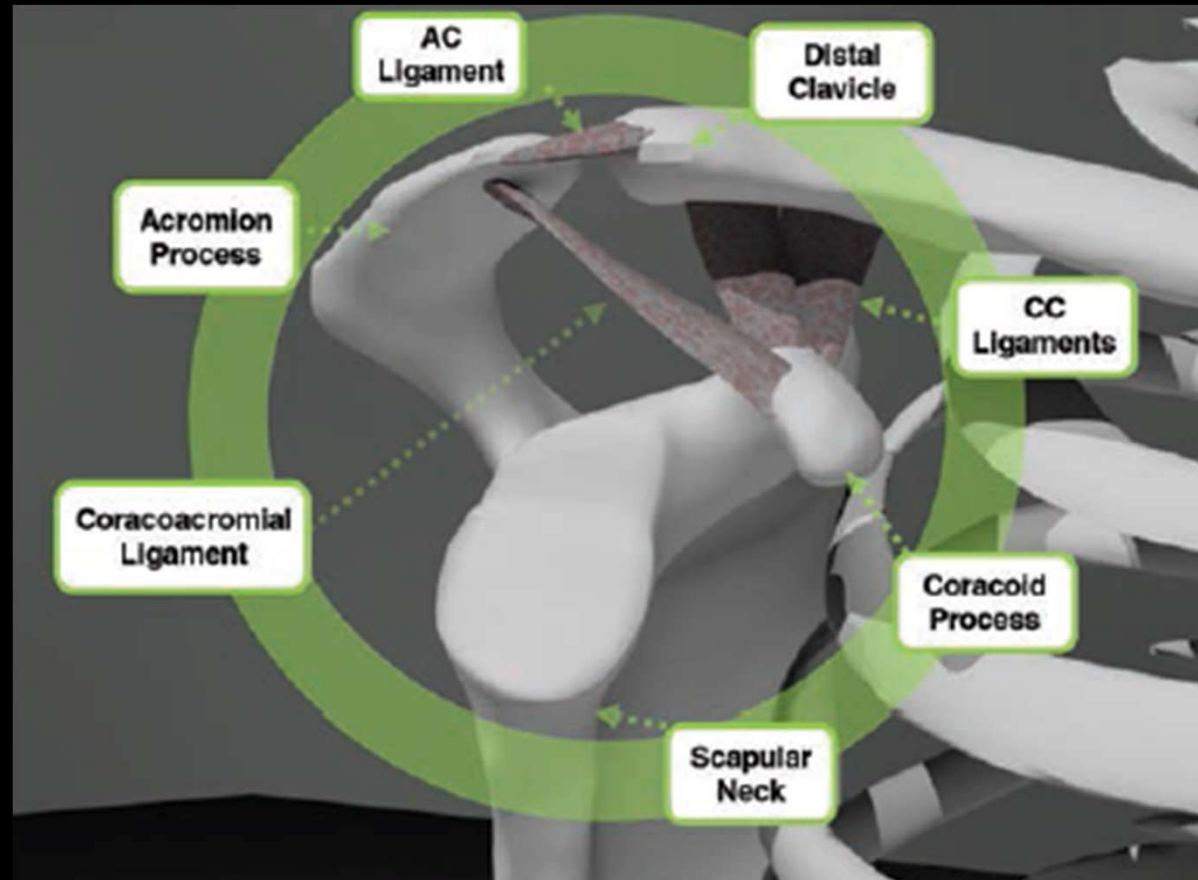
NITROKLOUBNÍ TLAK



STABILIZUJÍCÍ STRUKTURY

STATICKÉ

SUPERIOR
SHOULDER
SUSPENSORY
COMPLEX



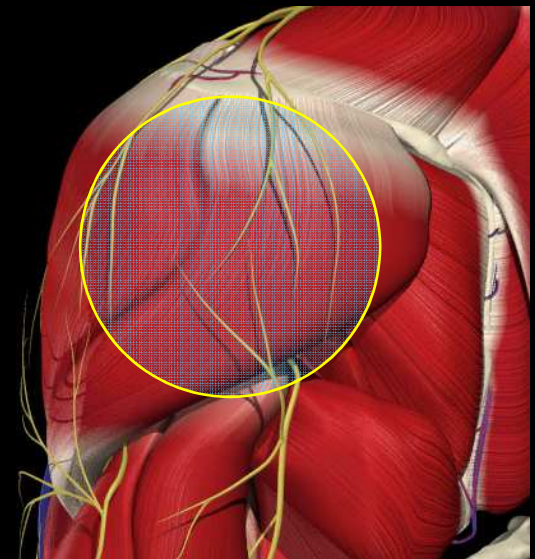
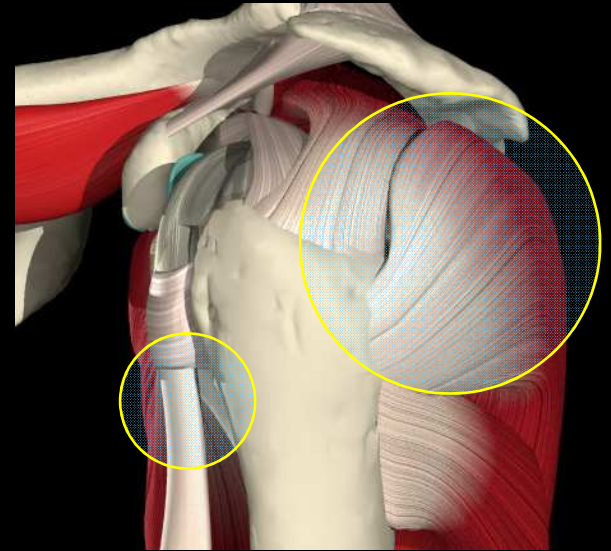
STABILIZUJÍCÍ STRUKTURY

DYNAMICKÉ

ROTÁTOROVÁ MANŽETA

ŠLACHA DLOUHÉ HLAVY BICEPSU

DELTOVÝ SVAL

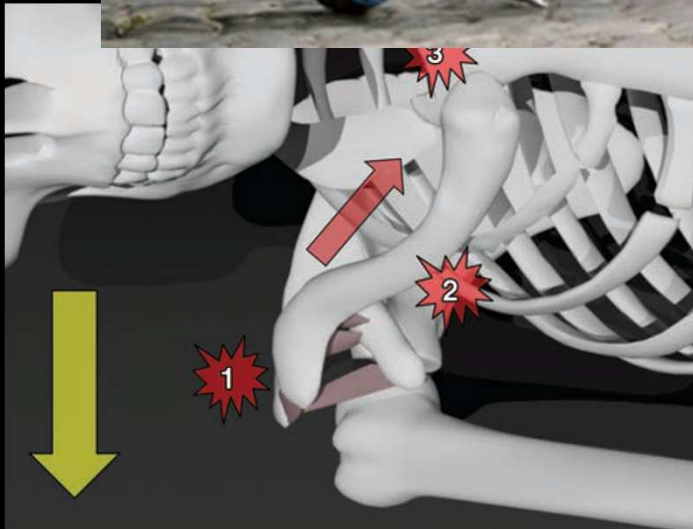
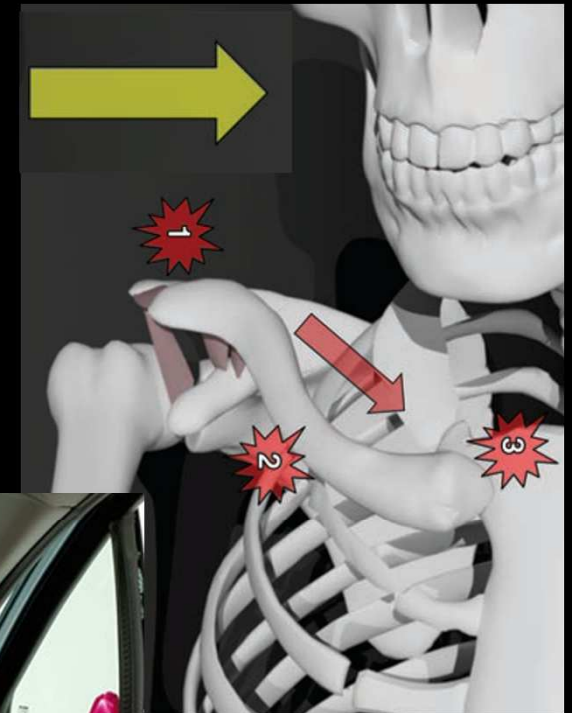


PORANĚNÍ ? JAK ?

PŘÍMO

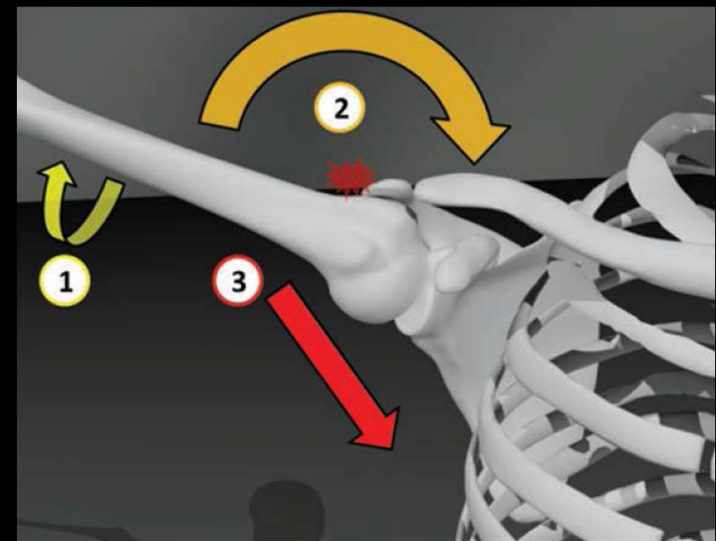
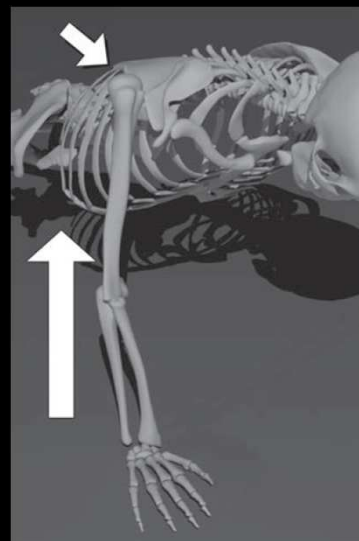
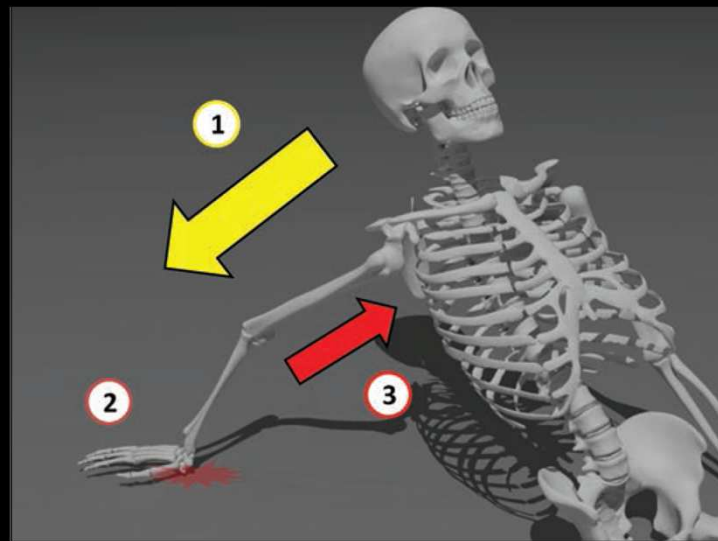
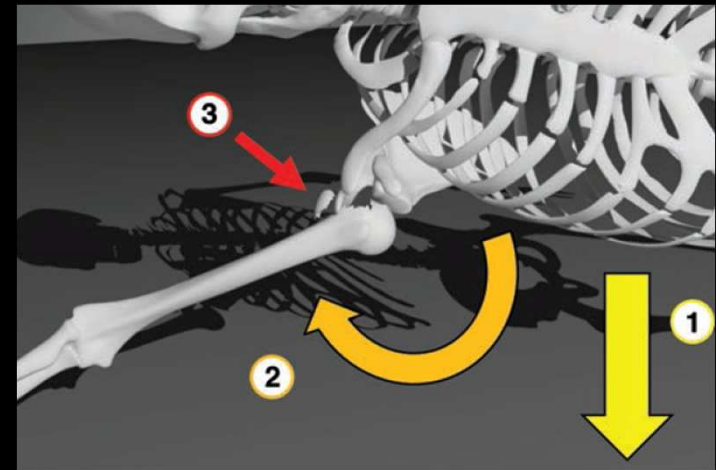
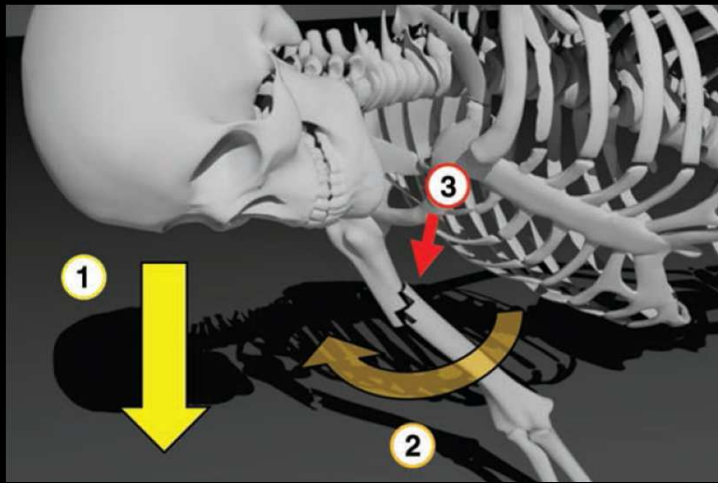


ACROMION
AC KLOUB
CLAVICULA



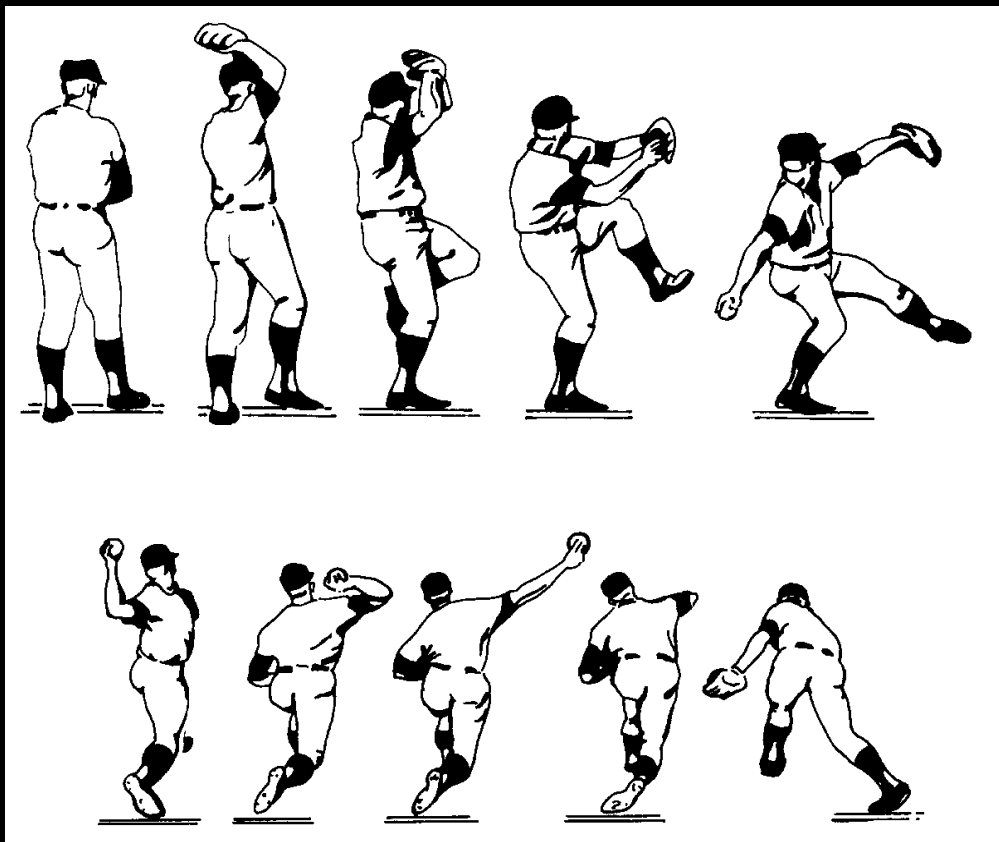
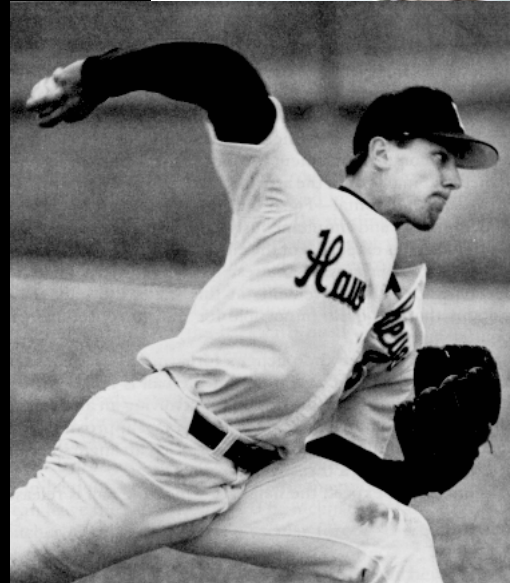
PORANĚNÍ ? JAK ?

NEPŘÍMO



PORANĚNÍ ? JAK ?

OVERUSE OVERHEAD



PORANĚNÍ ? CO ?

LUXACE

MĚKKÉ RAMENO

CAPUSULO - LABRUM

ŠLACHA BICEPSU

ROTÁTOROVÁ MANŽETA

GH LIGAMENTA

VAZY KLÍČNÍ KOSTI

CAPSULA AC KLOUBU

ZLOMENINY

KOSTNÍ STRUKTURY

A CHRUPAVKY

HLAVICE

GLENOID

LOPATKA

KLÍČNÍ KOST

CAVE – NERVOVÉ A CÉVNÍ LÉZE

PŘEKROČENÍ MÍRY STABILITY

LUXACE GH KLOUBU



KLASIFIKACE

RŮZNÉ HLEDISKO

STUPEŇ DISLOKACE

LUXACE

SUBLUXACE

(MIKRO NESTABILITA)

SMĚR

PŘEDNÍ

ZADNÍ

AXILÁRNÍ

FREKVENCE

PRVNÍ AKUTNÍ

RECIDIVUJÍCÍ

ETIOLOGIE

TRAUMATICKÁ – MAKROTRAUMA (TUBS)

ATRAUMATICKÁ – MIKROTRAUMATIZACE (AMBRII)

NEUROGENNÍ – PLEGIE

PSYCHOGENNÍ

POSTLUXAČNÍ NÁSLEDKY

BOLESTI – PŘI POHYBU, V KLIDU, V NOCI

ZTUHLOST – OMEZENÍ HYBNOSTI

SNÍŽENÍ SVALOVÉ SÍLY

KREPITUS - PŘESKAKOVÁNÍ

RELUXACE - RECIDÍVA



STABILIZACE RAMENA

PŘEDNÍ

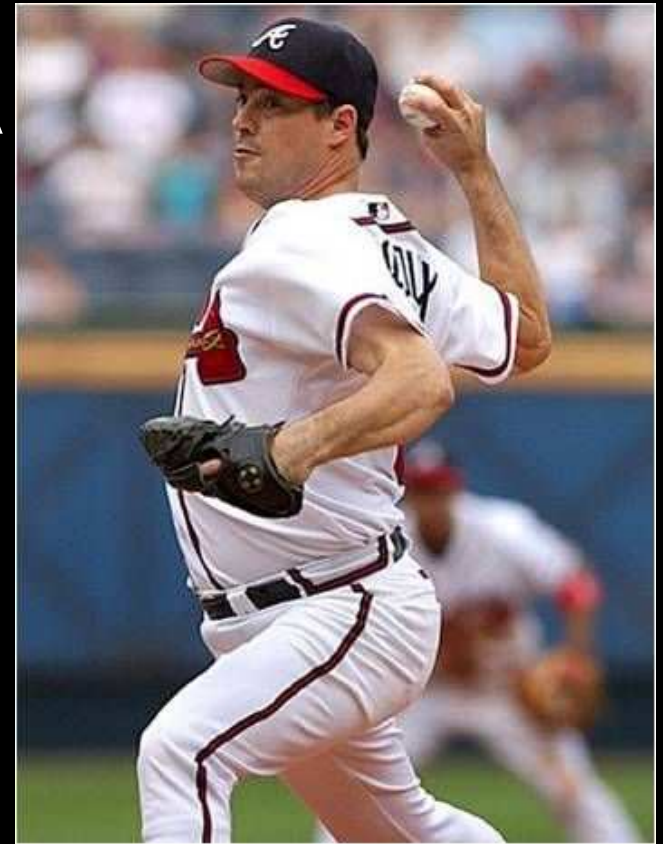
ZADNÍ

VS. MULTIDIREKČNÁLNÍ

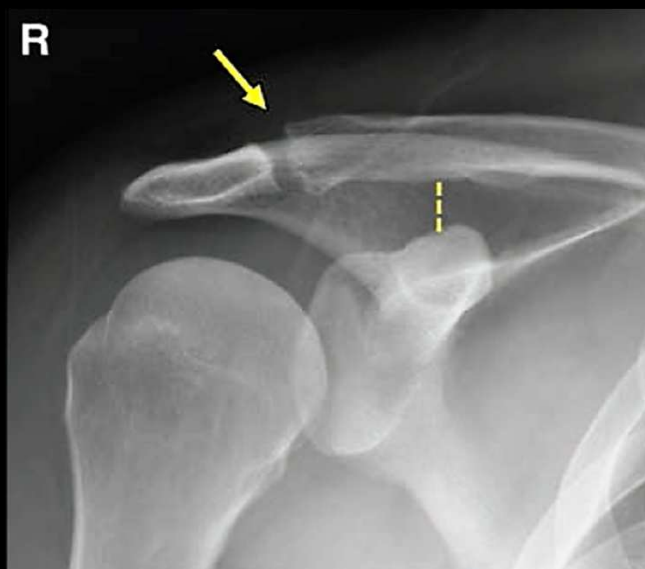
KOSTĚNNÝ BANKART

KOSTNÍ BLOČKY

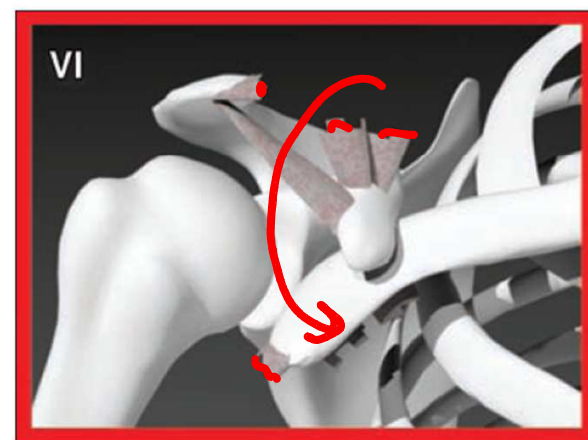
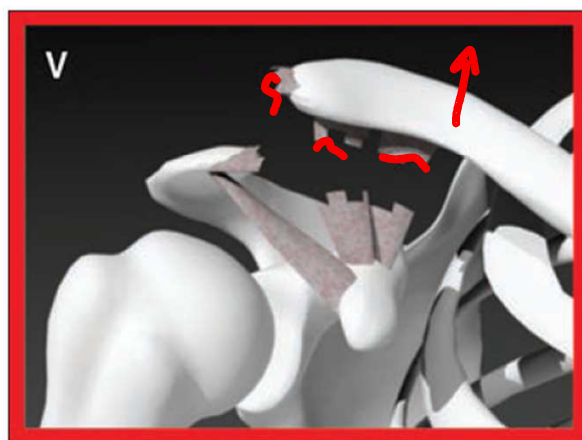
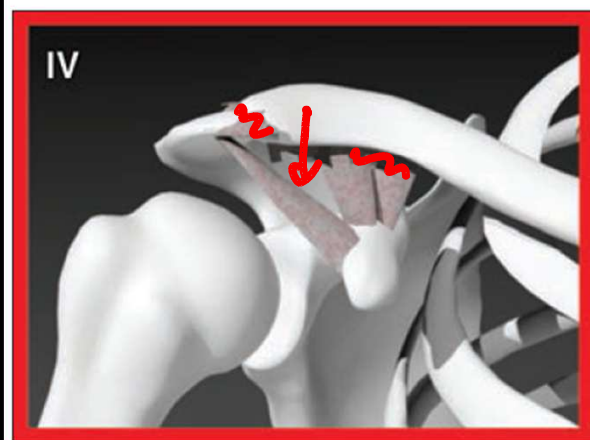
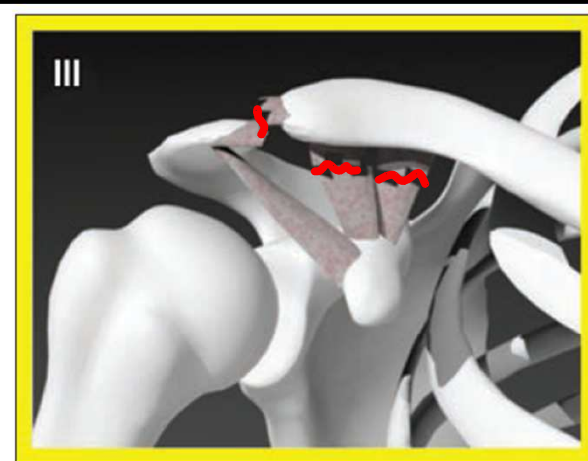
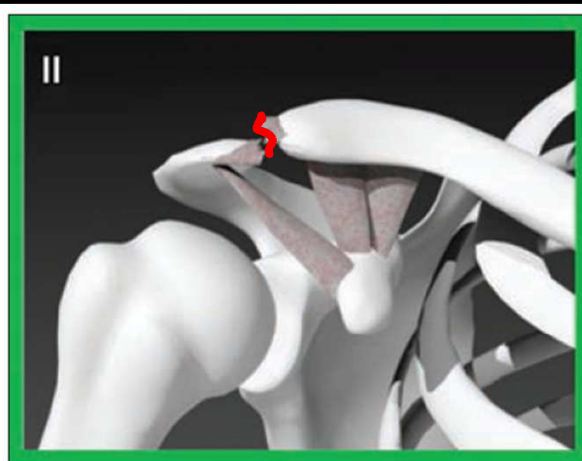
LATARJET



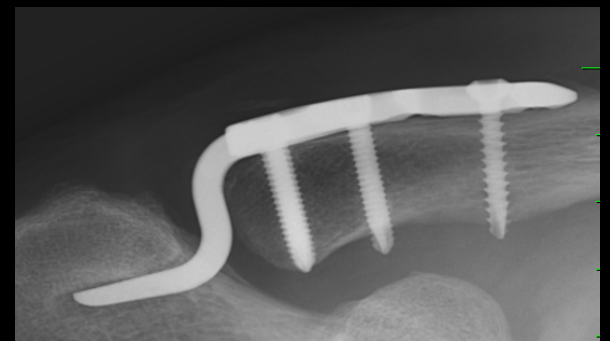
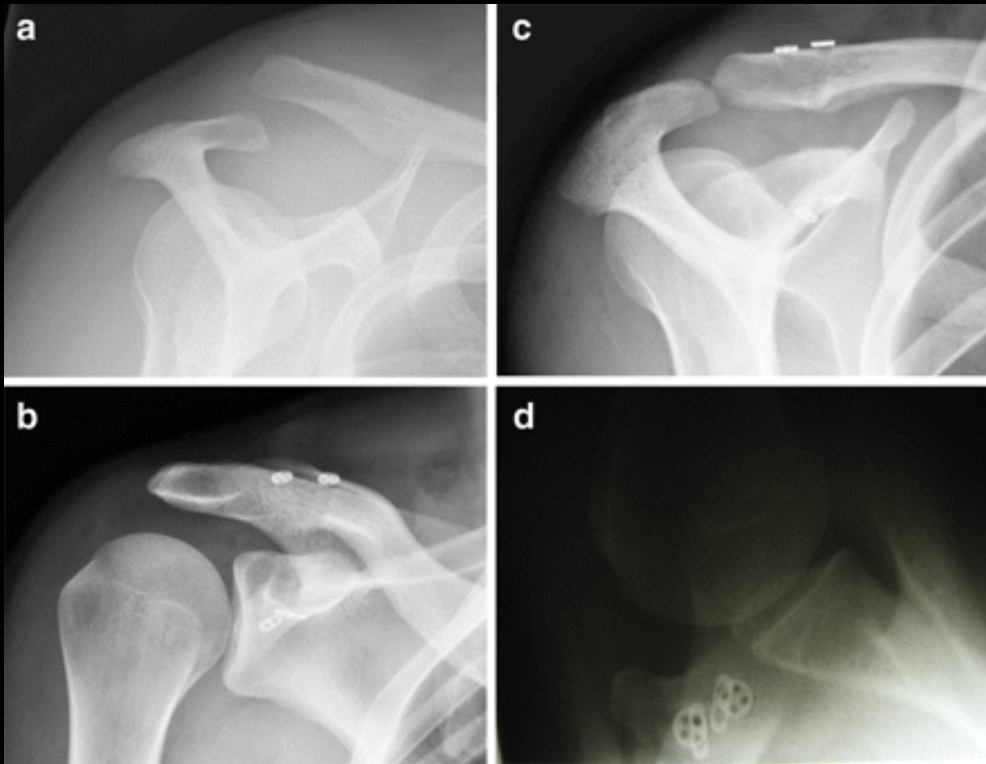
AC KLOUB LUXACE



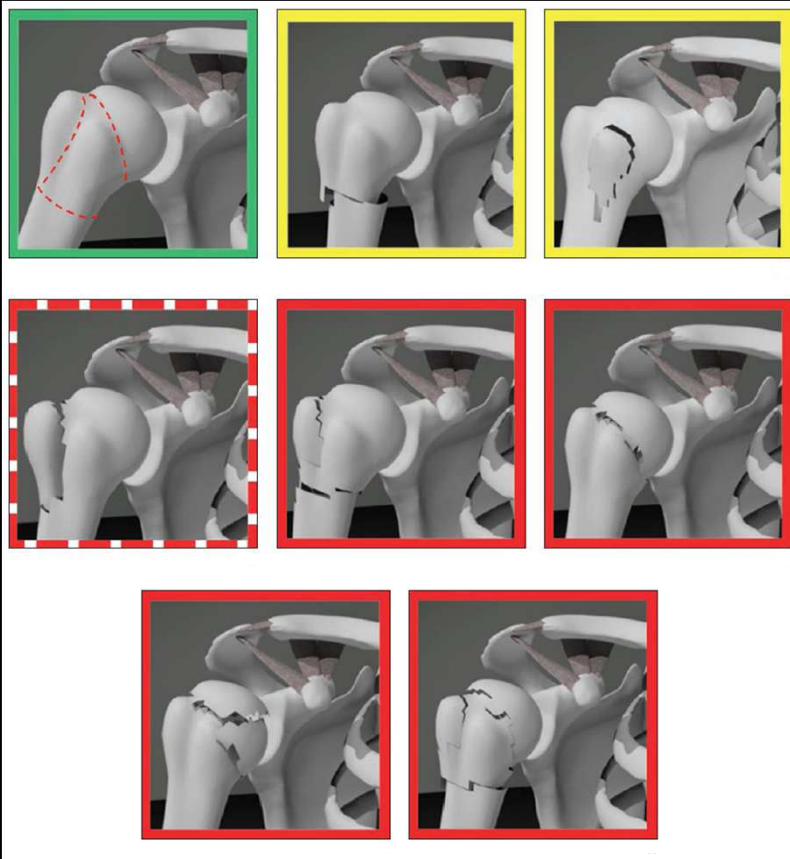
AC KLOUB LUXACE



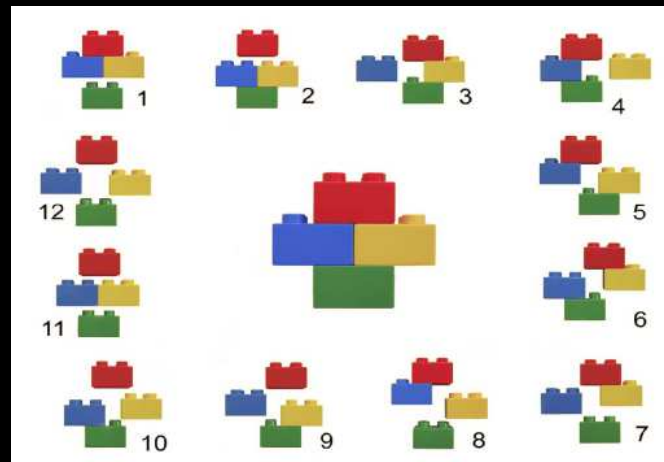
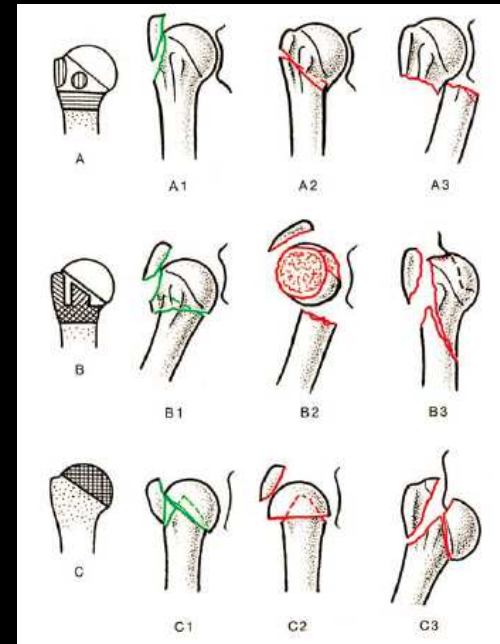
AC KLOUB LUXACE



ZLOMENINY PROXIMÁLNIHO HUMERU

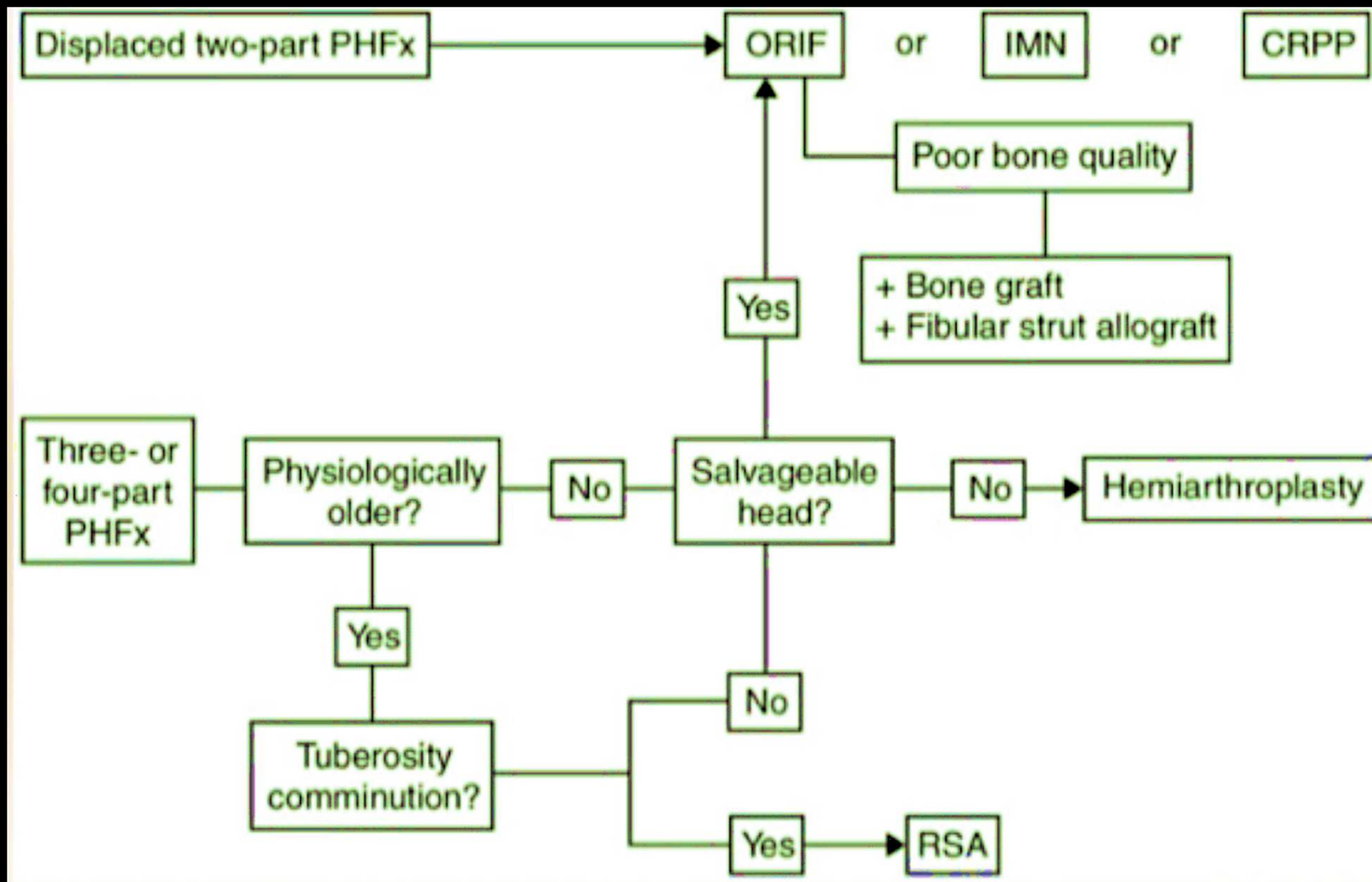


AO



R.
Hertel
"LEGO"

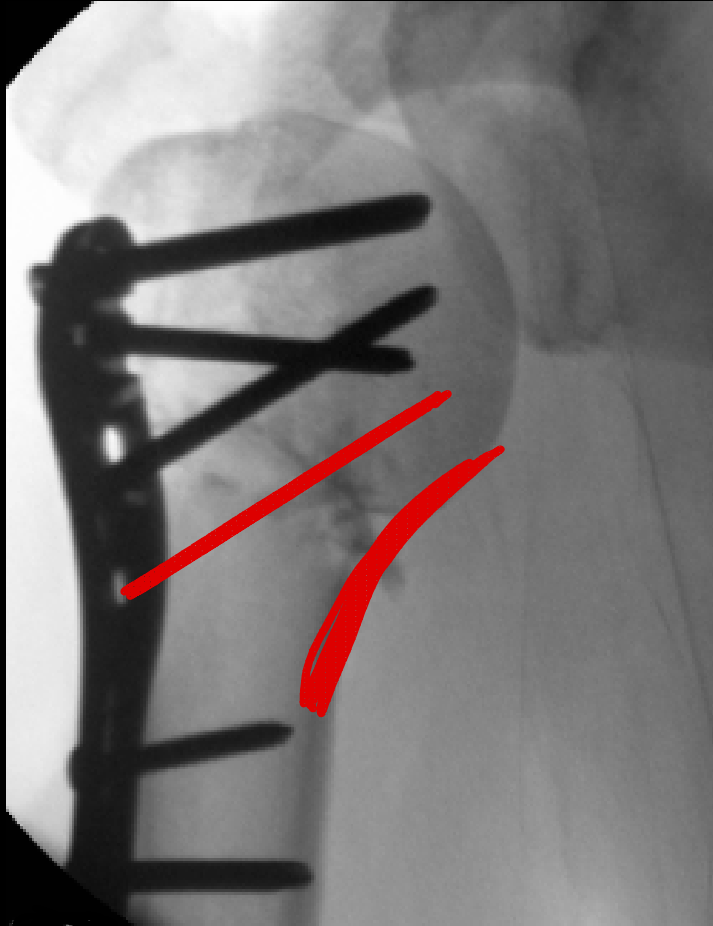
ZLOMENINY PROXIMÁLNIHO HUMERU



ZLOMENINY PROXIMÁLNÍHO HUMERU HRBOLY

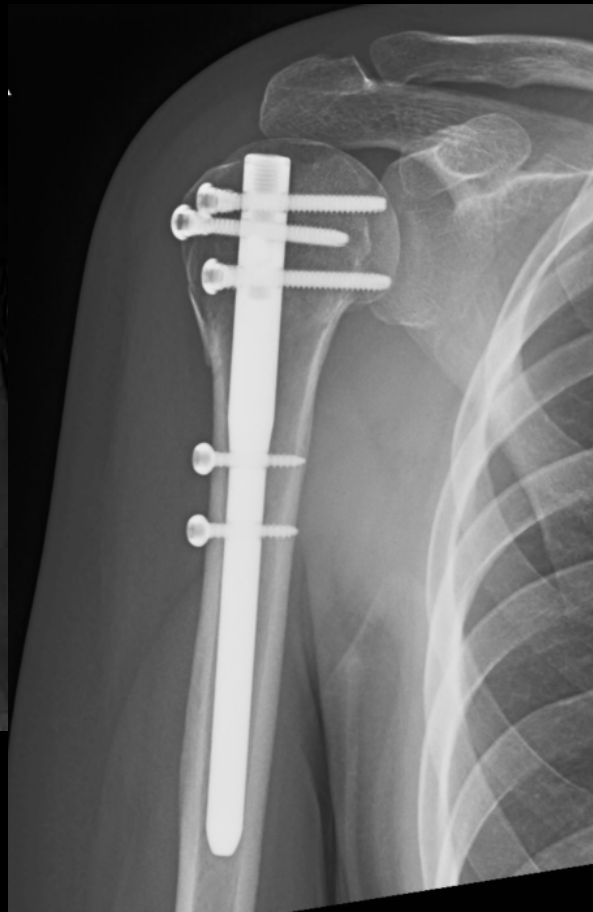


ZLOMENINY PROXIMÁLNÍHO HUMERU HLAVICE

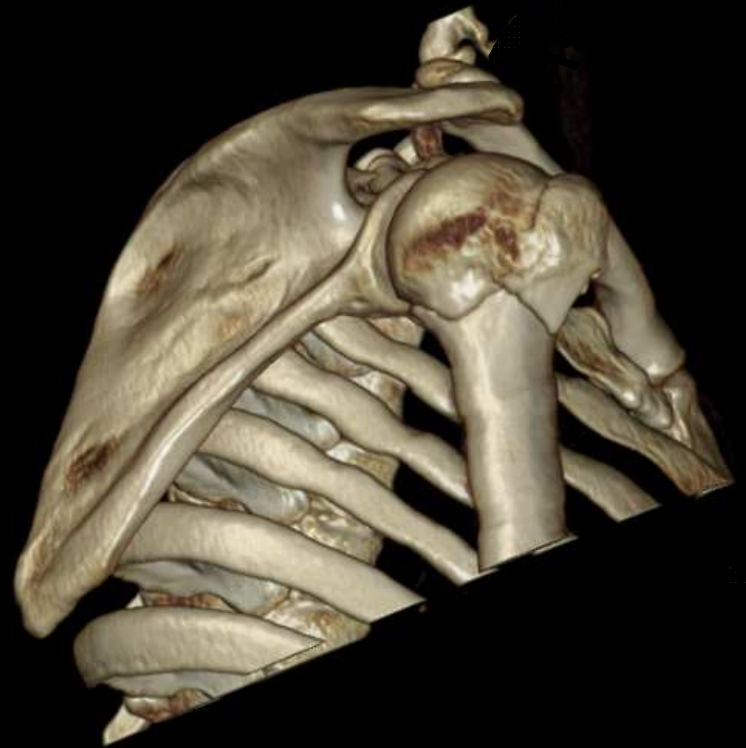


PHILOS LCP

ZLOMENINY PROXIMÁLNÍHO HUMERU HLAVICE



TARGON PH



ZLOMENINY PROXIMÁLNÍHO HUMERU HLAVICE

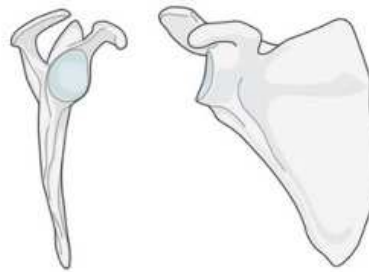


CCEP

ZLOMENINY LOPATKY

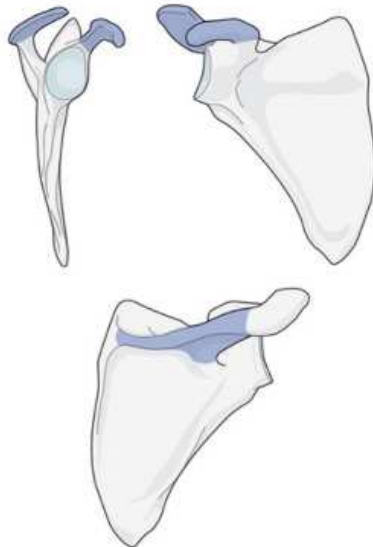
Scapula

Bone: Scapula 14

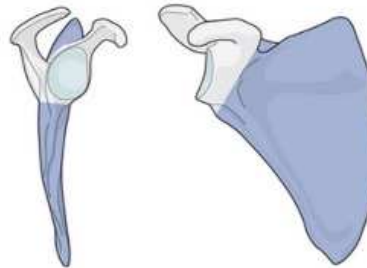


14

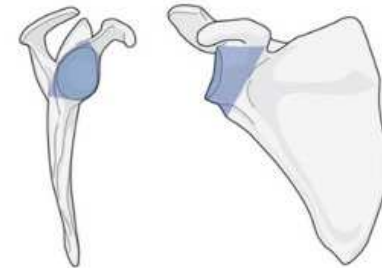
Locations:
Scapula, **process**
14A



Scapula, **body**
14B*



Scapula, **glenoid fossa**
14F*



* Qualifications for process fractures:

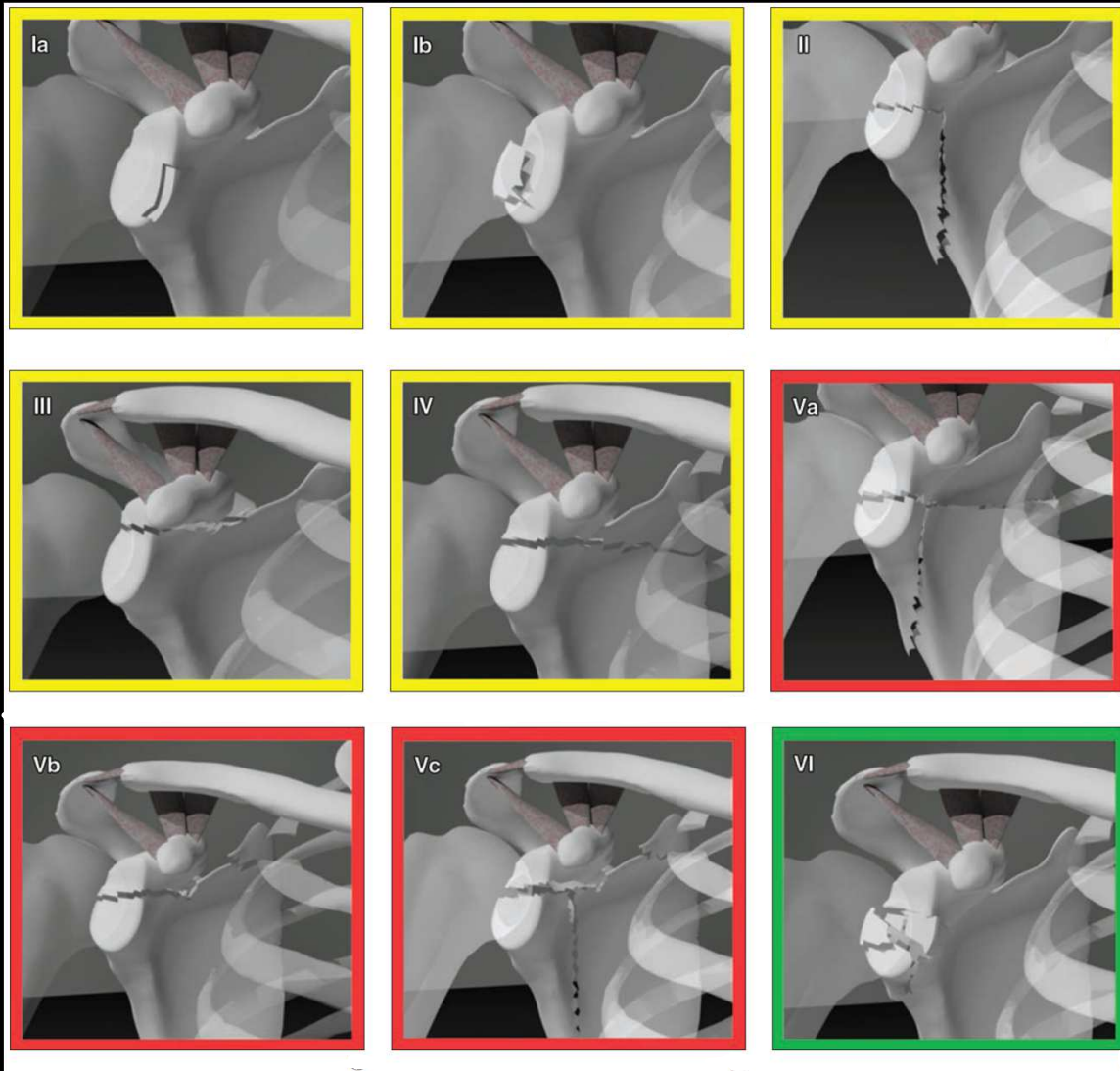
x Coracoid P1

y Acromion P2

z Both processes P3

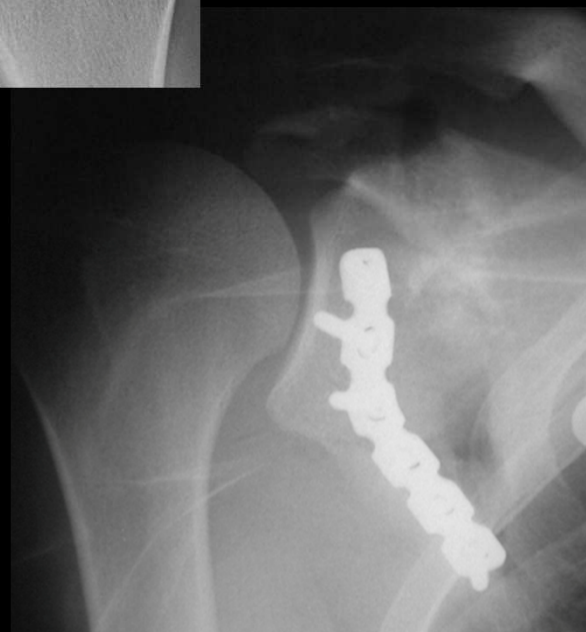
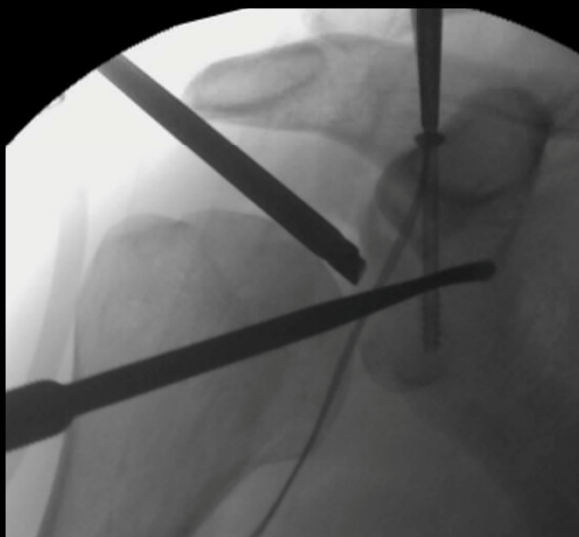
(These qualifications may be added to any fracture coded as type B or type F)

ZLOMENINY LOPATKY

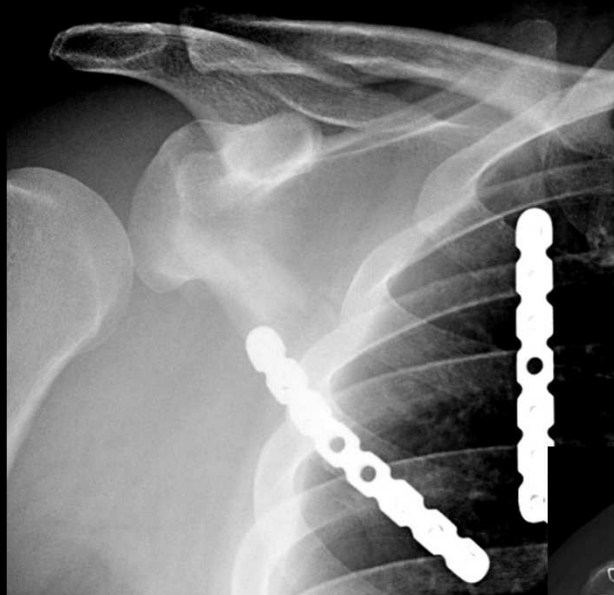


*Idberg
Goss*

ZLOMENINY LOPATKY GLENOID



ZLOMENINY LOPATKY TĚLO



ZÁVĚR



CÍL: BEZBOLESTNÝ MAXIMÁLNÍ POHYB RAMENA

DOBŘÁ DIAGNOSTIKA
ADEKVÁTNÍ LÉČBA
ČASNÁ REHABILITACE



NÁVRAT K PLNOHODNOTNÉMU ŽIVOTU



... S RADOSTÍ A PRO RADOST

