

Neurochirurgické poznámky k radiologii a urgentnímu příjmu

Tomáš Svoboda et al.

Neurochirurgická klinika FN Brno a MU Brno



Neuroradiology head trauma

www.slideshare.net/sinwavel7/neuroradiology-head-trauma-31510547

slideshare Explore Search Upload Login Signup

Share Email Embed Like Save

ROLE OF CT SCAN IN ACUTE HEAD TRAUMA

By Dr Tariq Masood

Share

Related

- Brain Injury 3008 views
- Head Trauma: CT Evaluation 3298 views
- Pathology of Head Injury 1098 views
- Neuroradiology Head Trauma 828 views
- Brain & SCI 2241 views

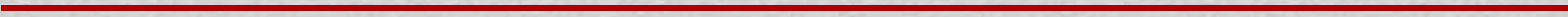


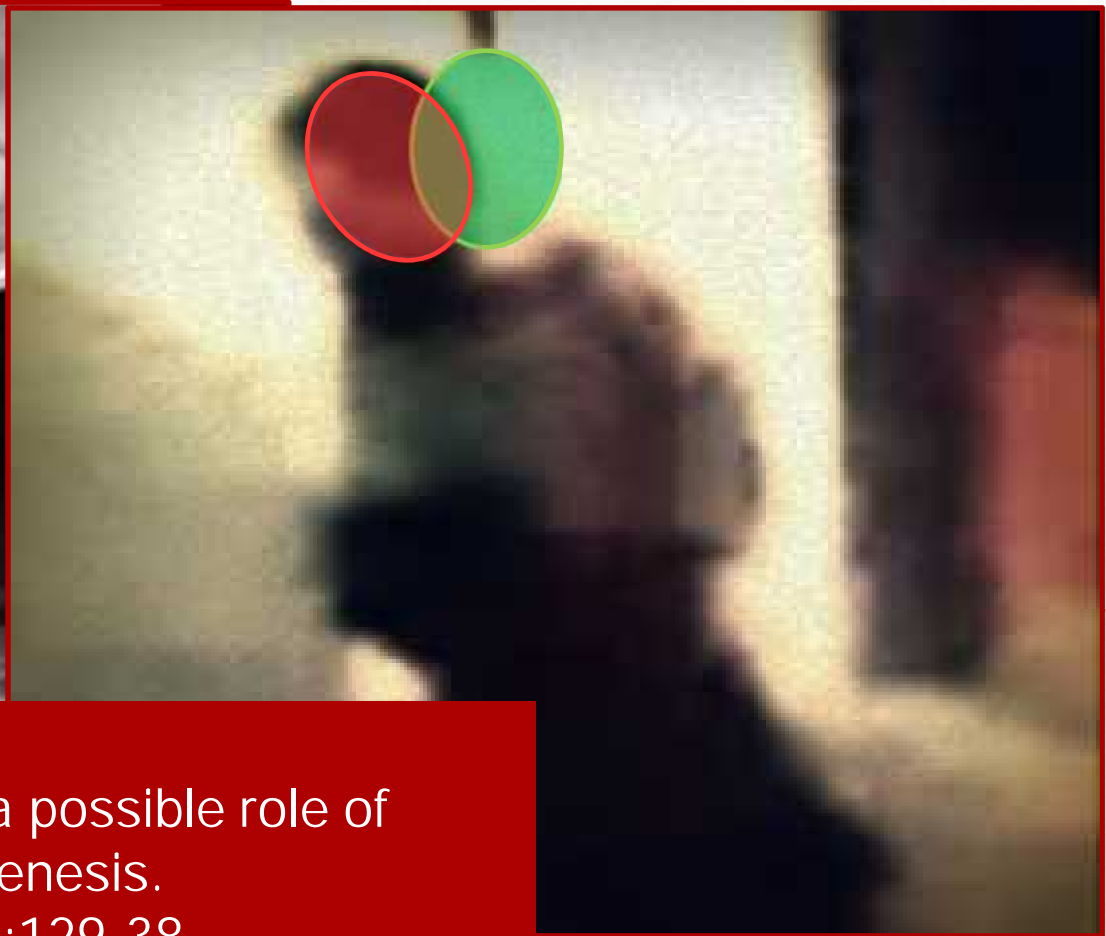


Kamera v baru



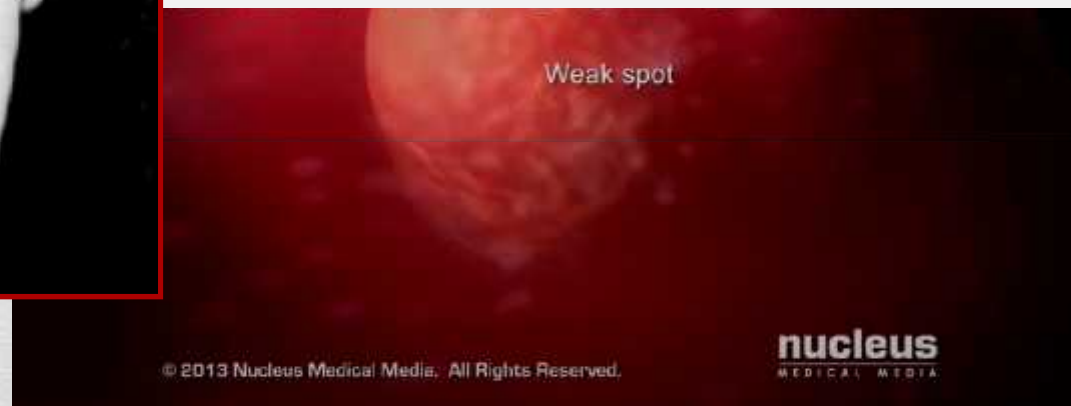
Kamera před barem





Chung YS, Han DH.
Vertebrobasilar dissection: a possible role of
whiplash injury in its pathogenesis.
Neurol Res. 2002 Mar;24(2):129-38.

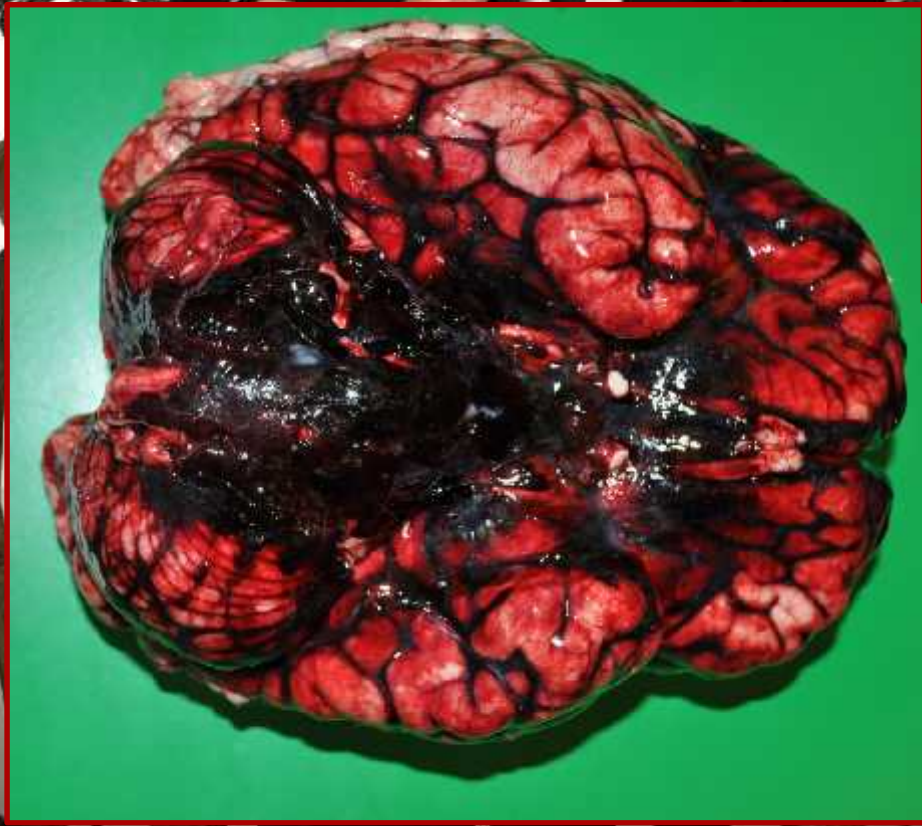
whiplash → disekce

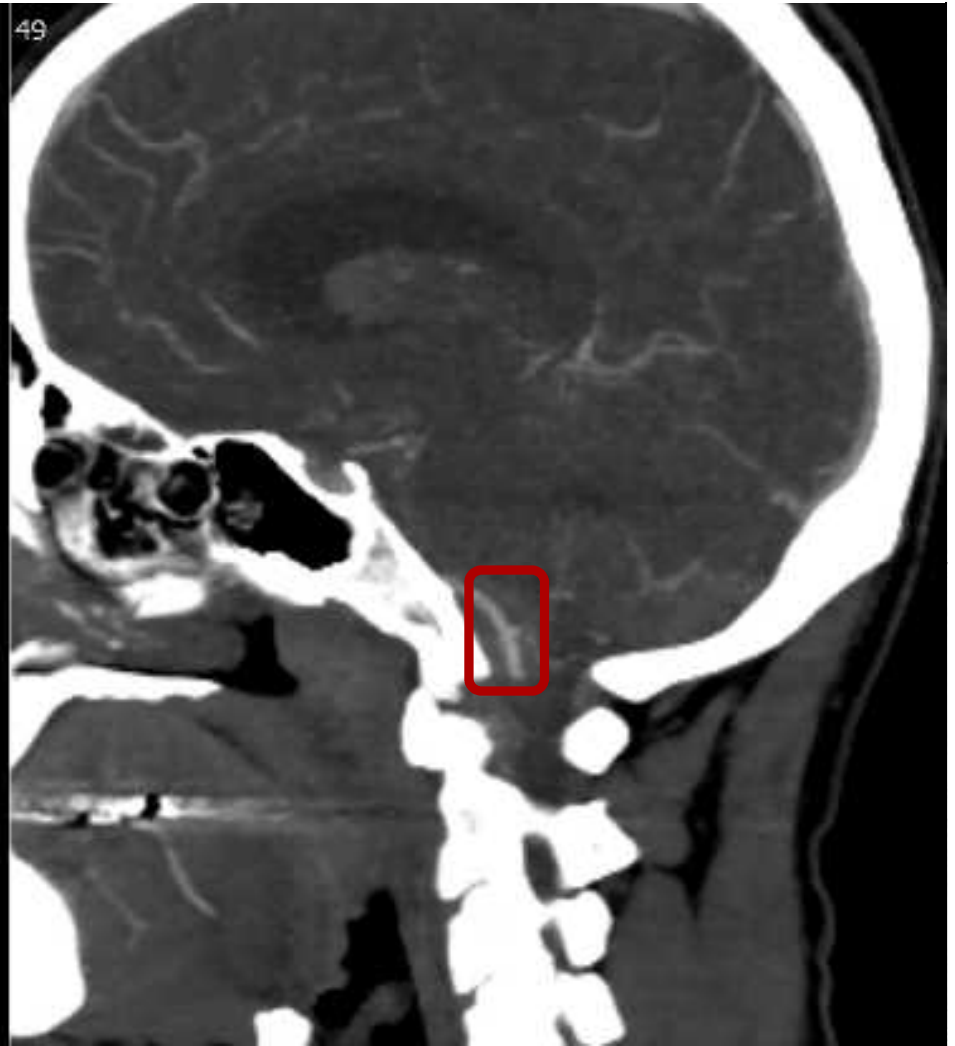
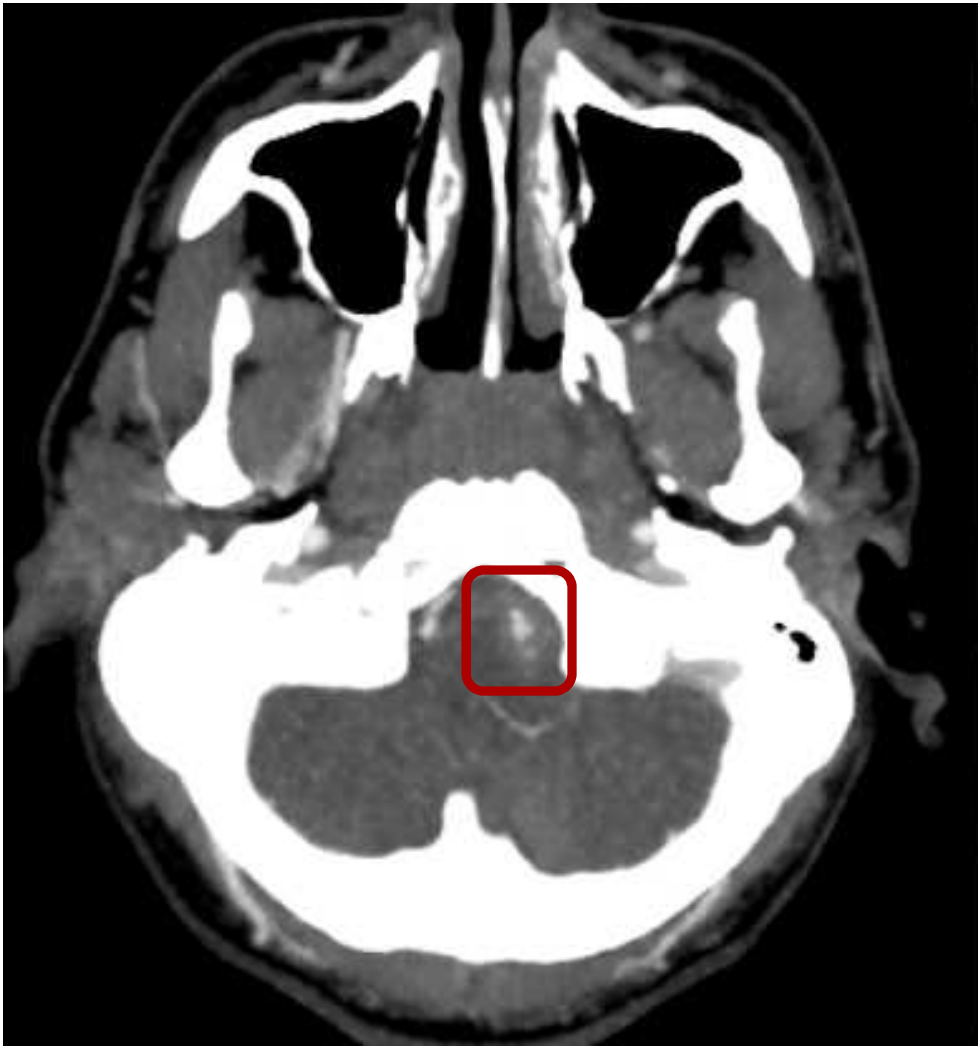


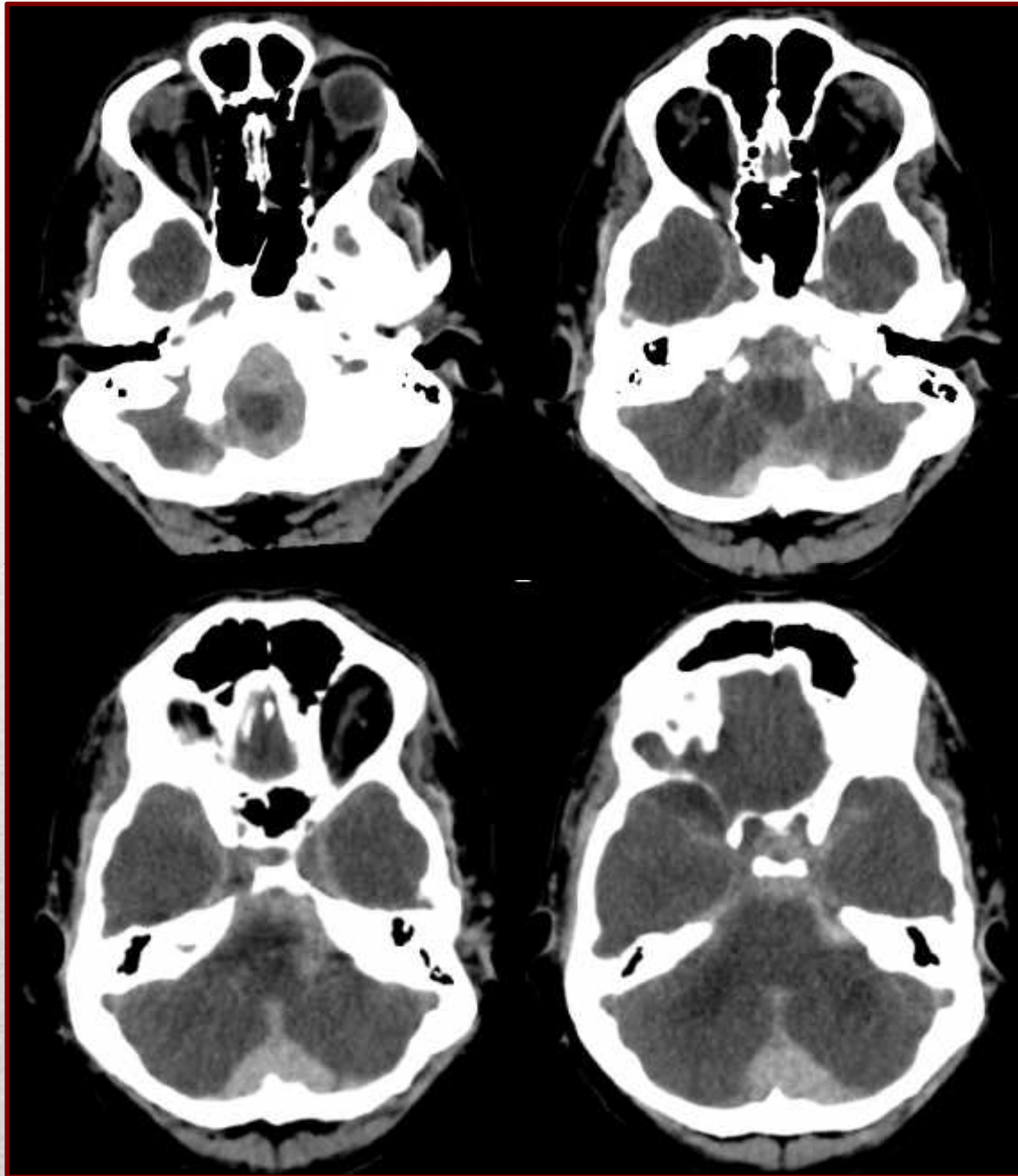
© 2013 Nucleus Medical Media. All Rights Reserved.

nucleus
MEDICAL MEDIA

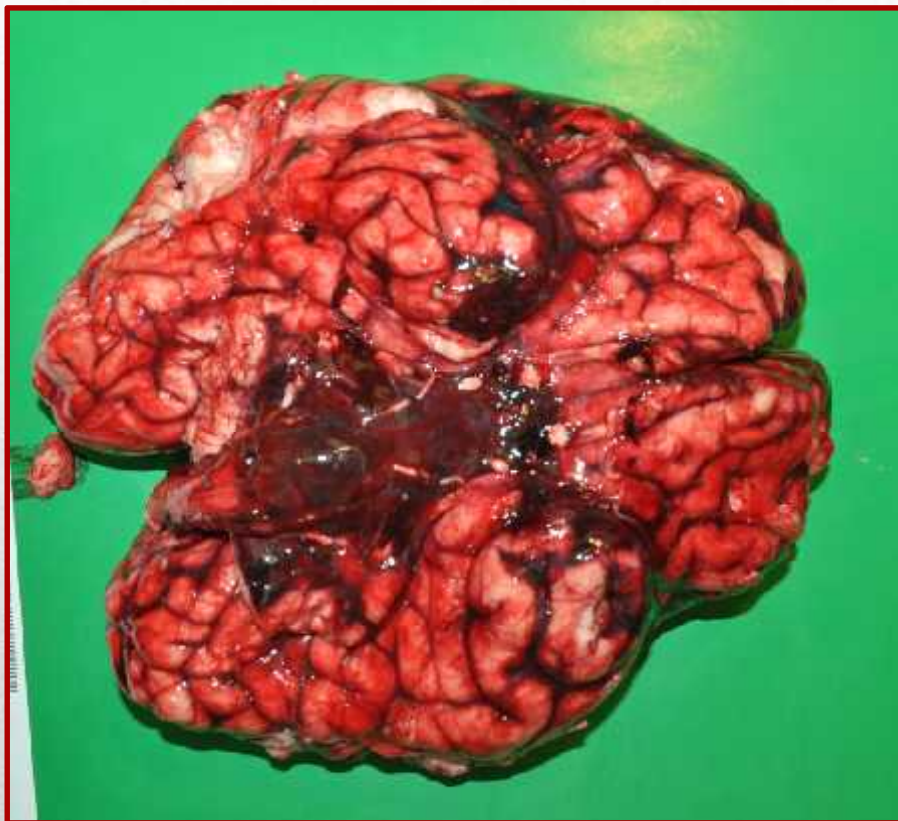
vakovité aneurysma





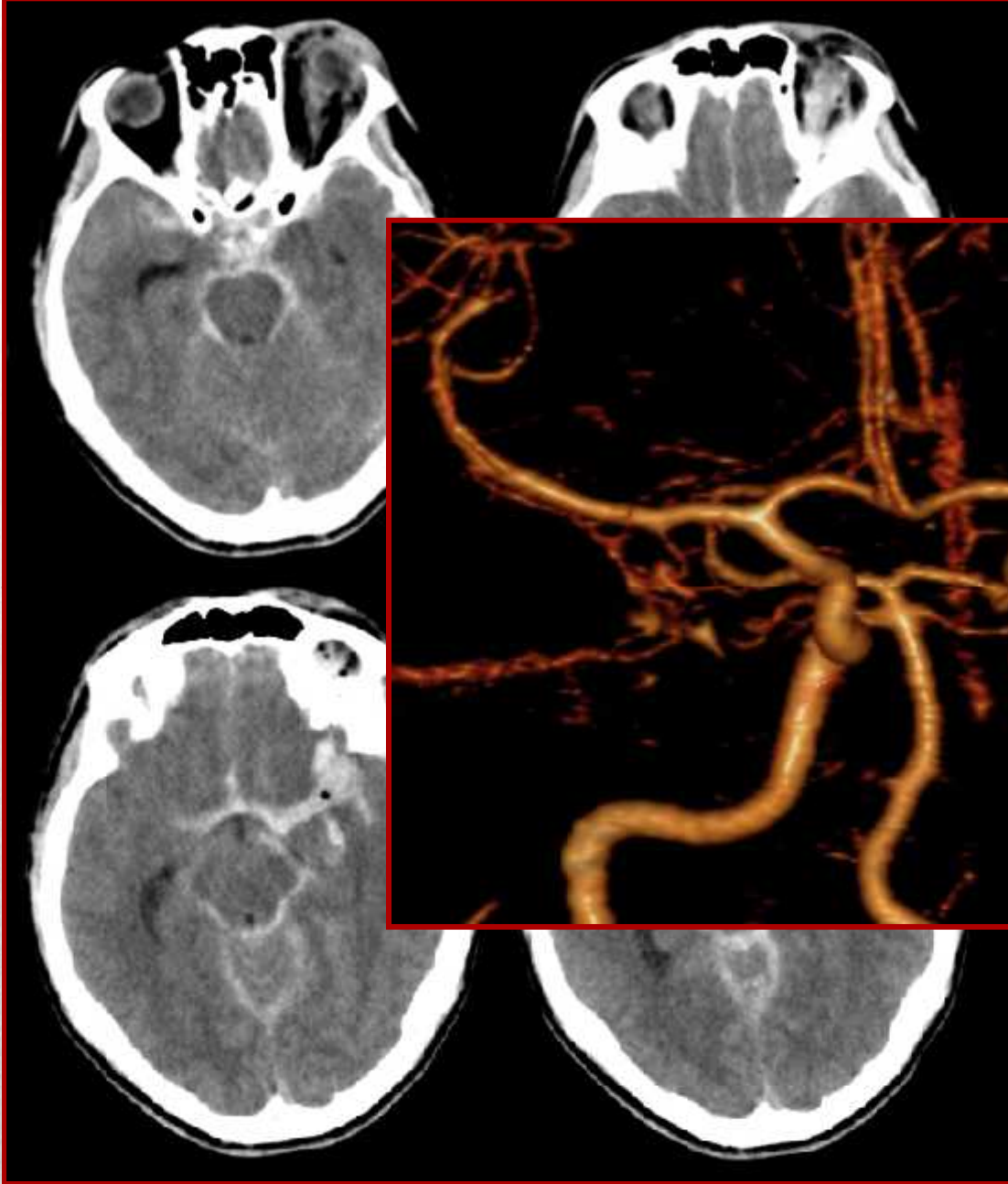


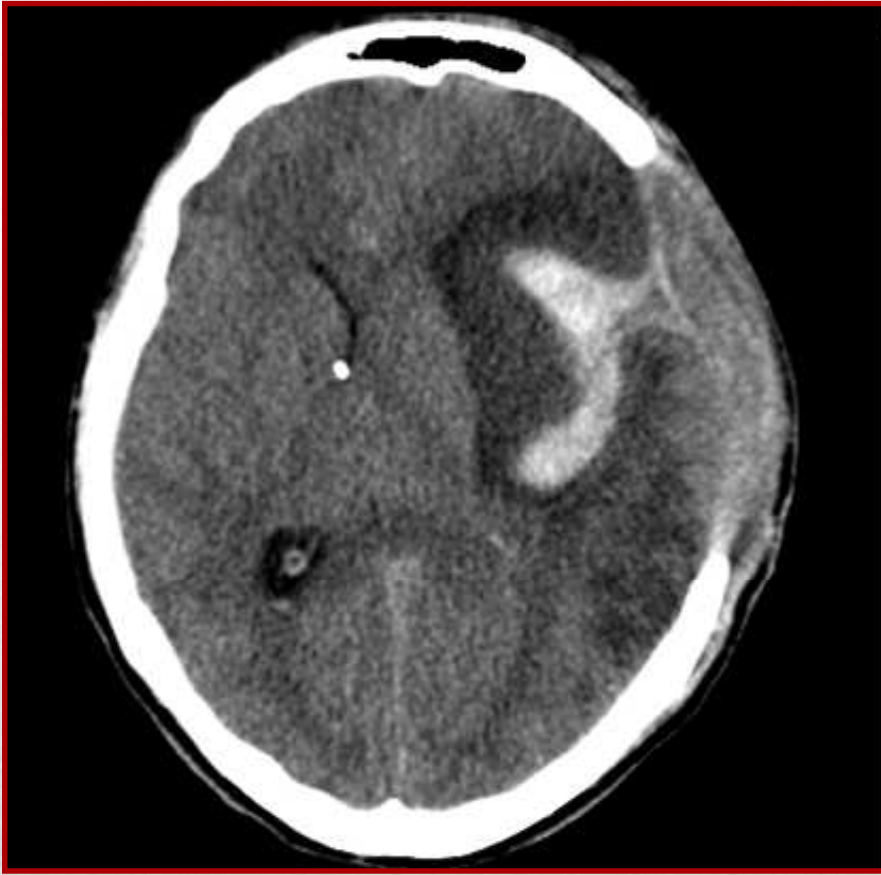
Pitevní nález



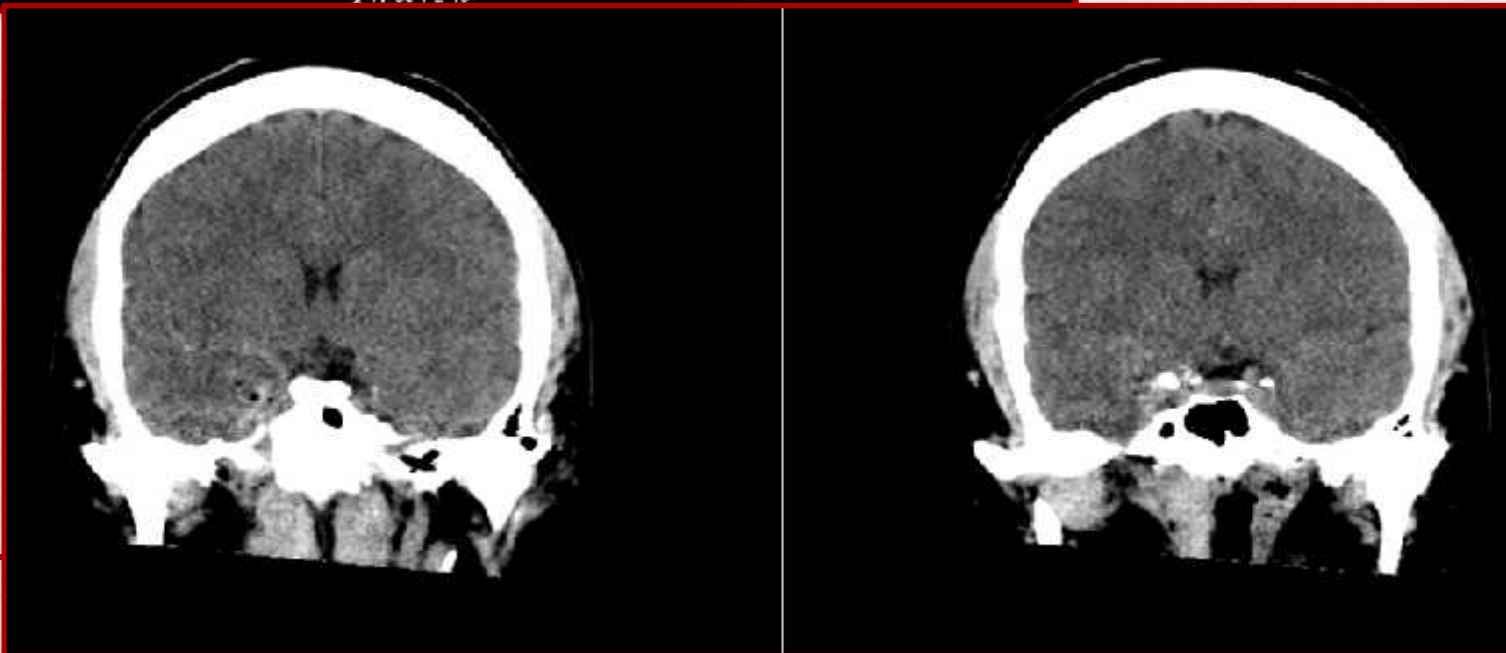
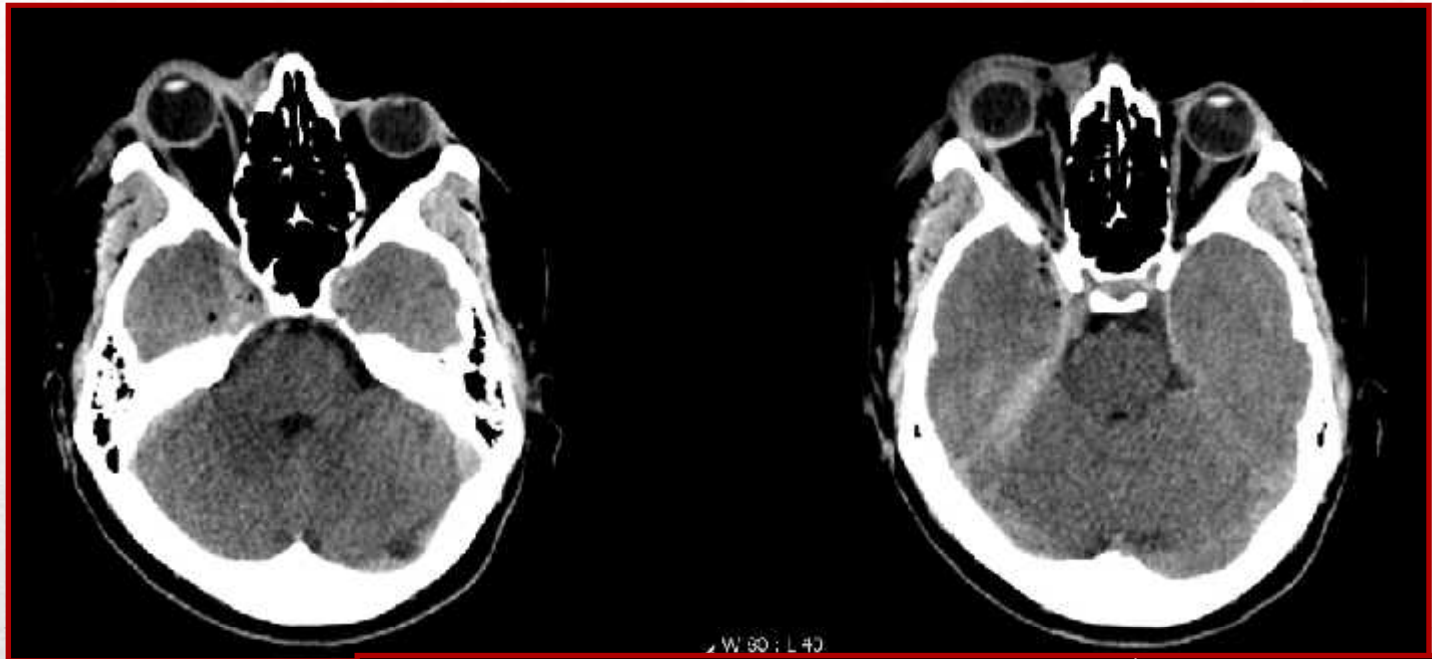
„...aneurysma II (barvení na elastiku):
fragmentovaná stěna aneurysmatu
s elastickými vlákny – pravé
aneurysma...“







[Red bar]

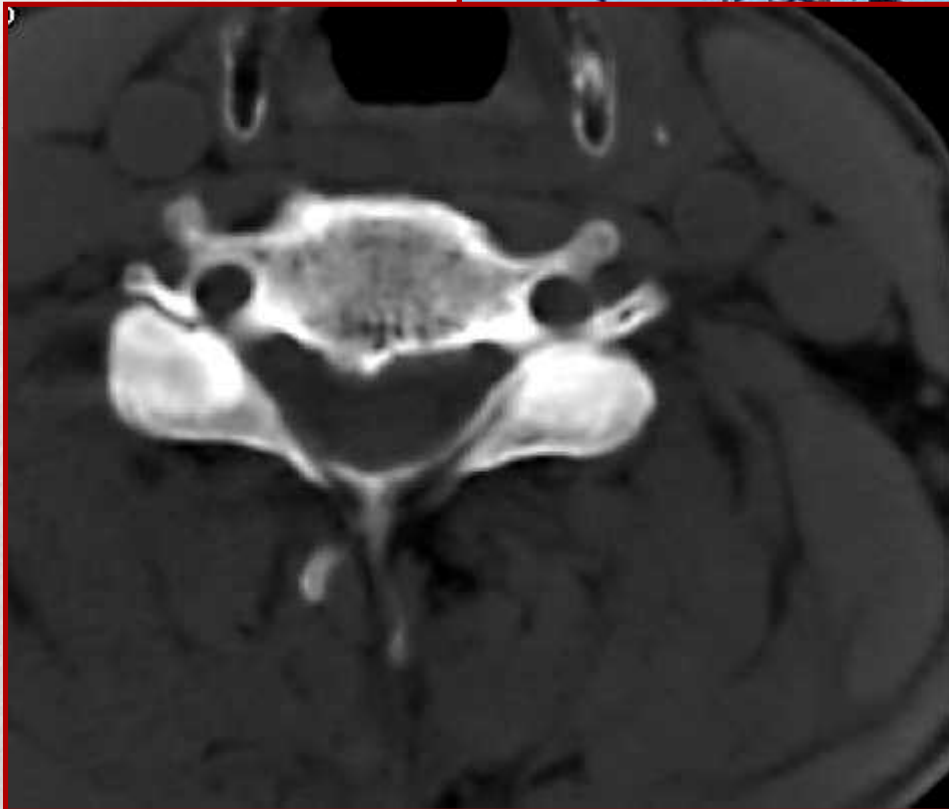


[Red bar]

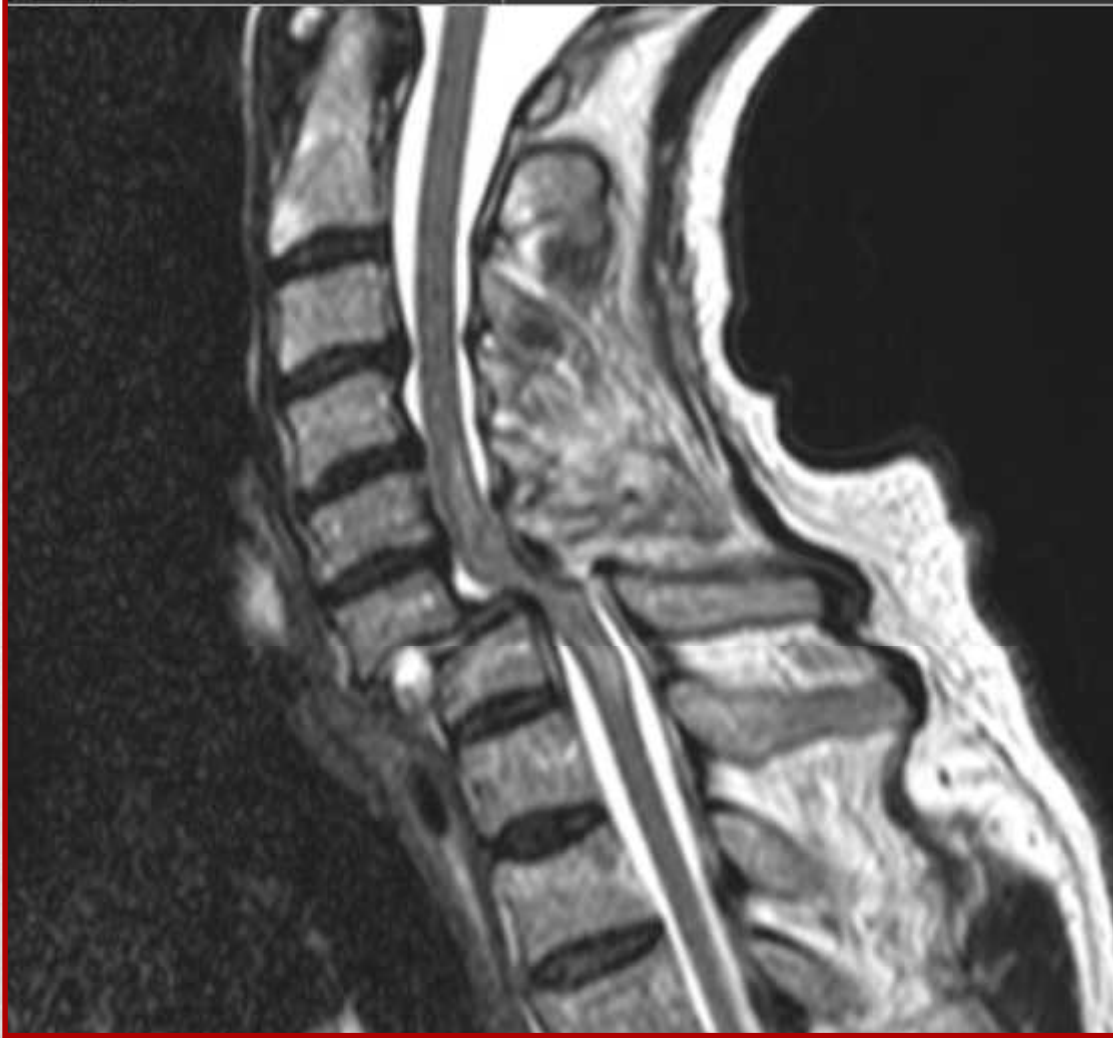
[Red line]

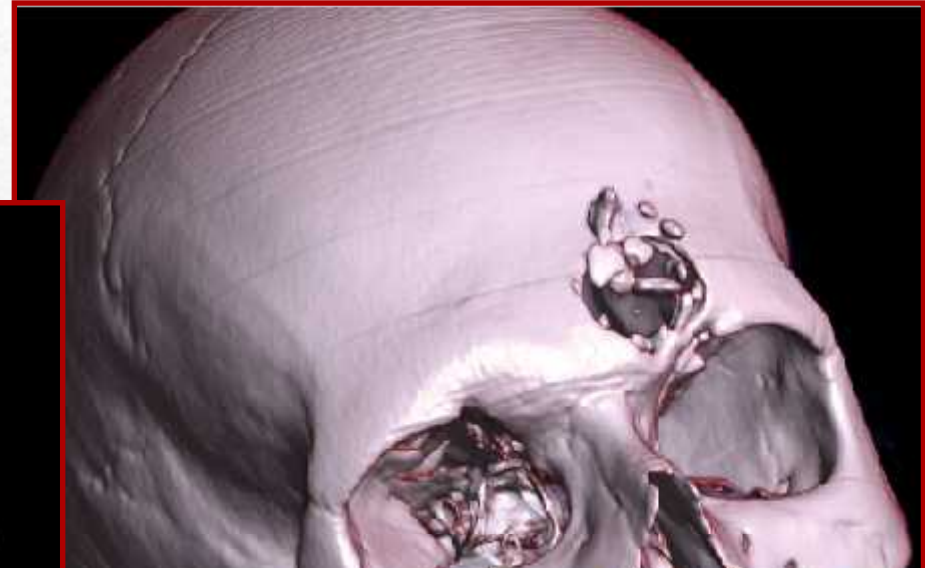
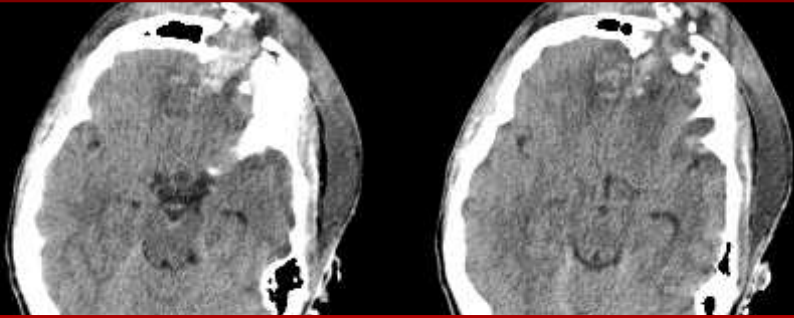
[Red bar]





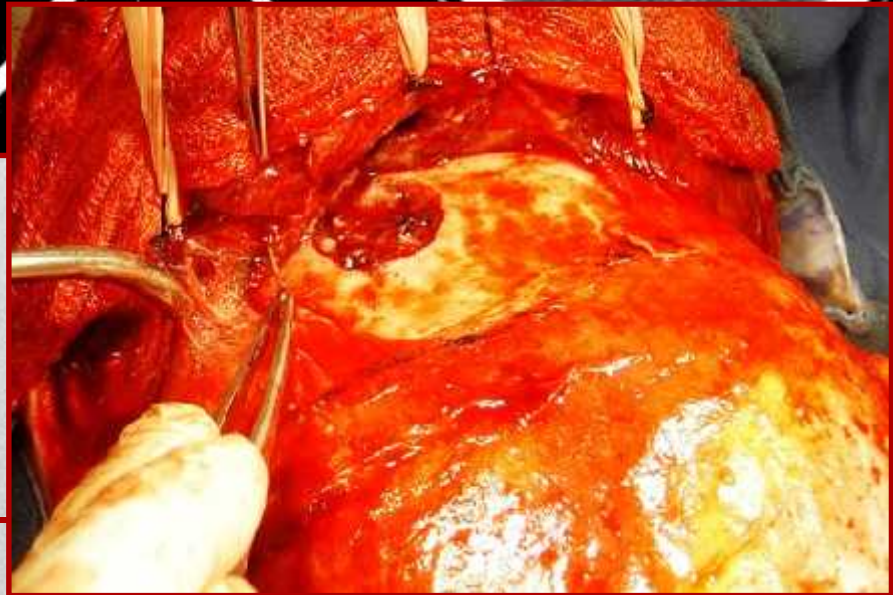
5







17

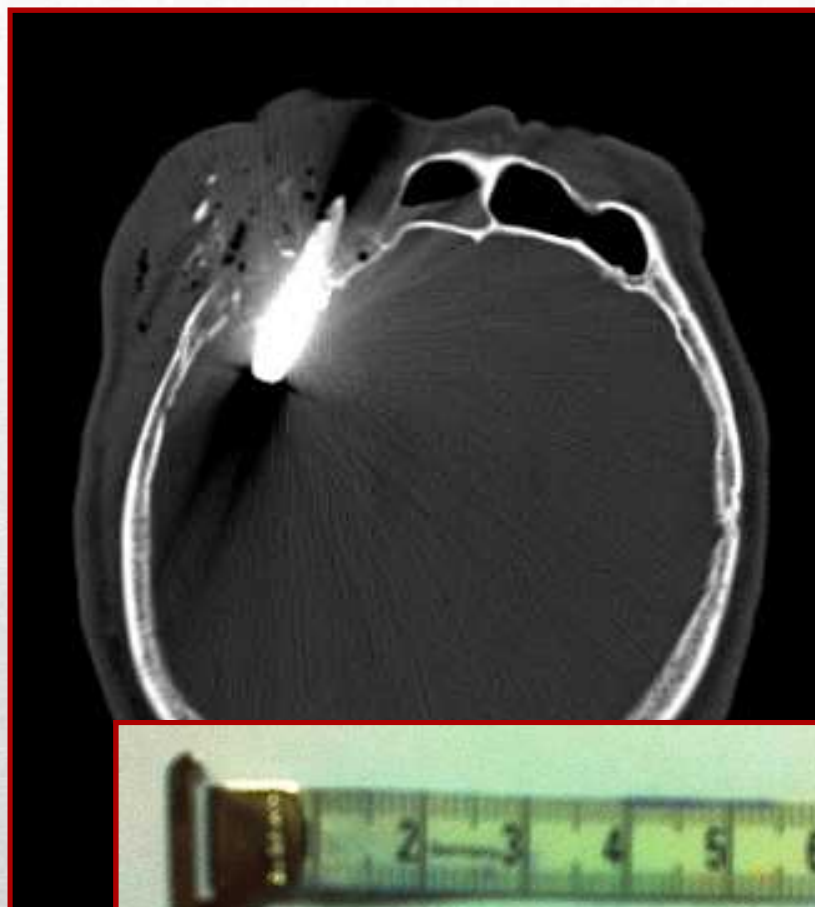




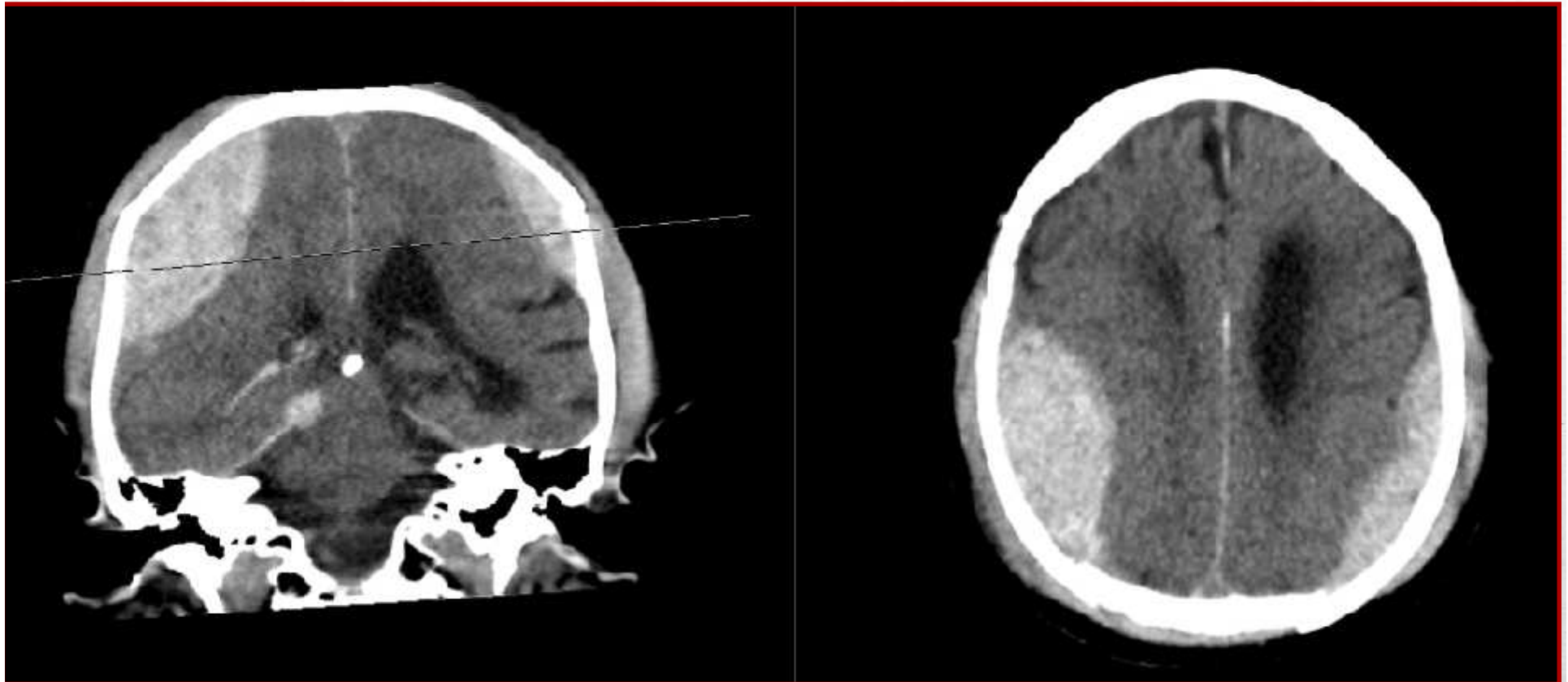


Vrták ø 6 mm

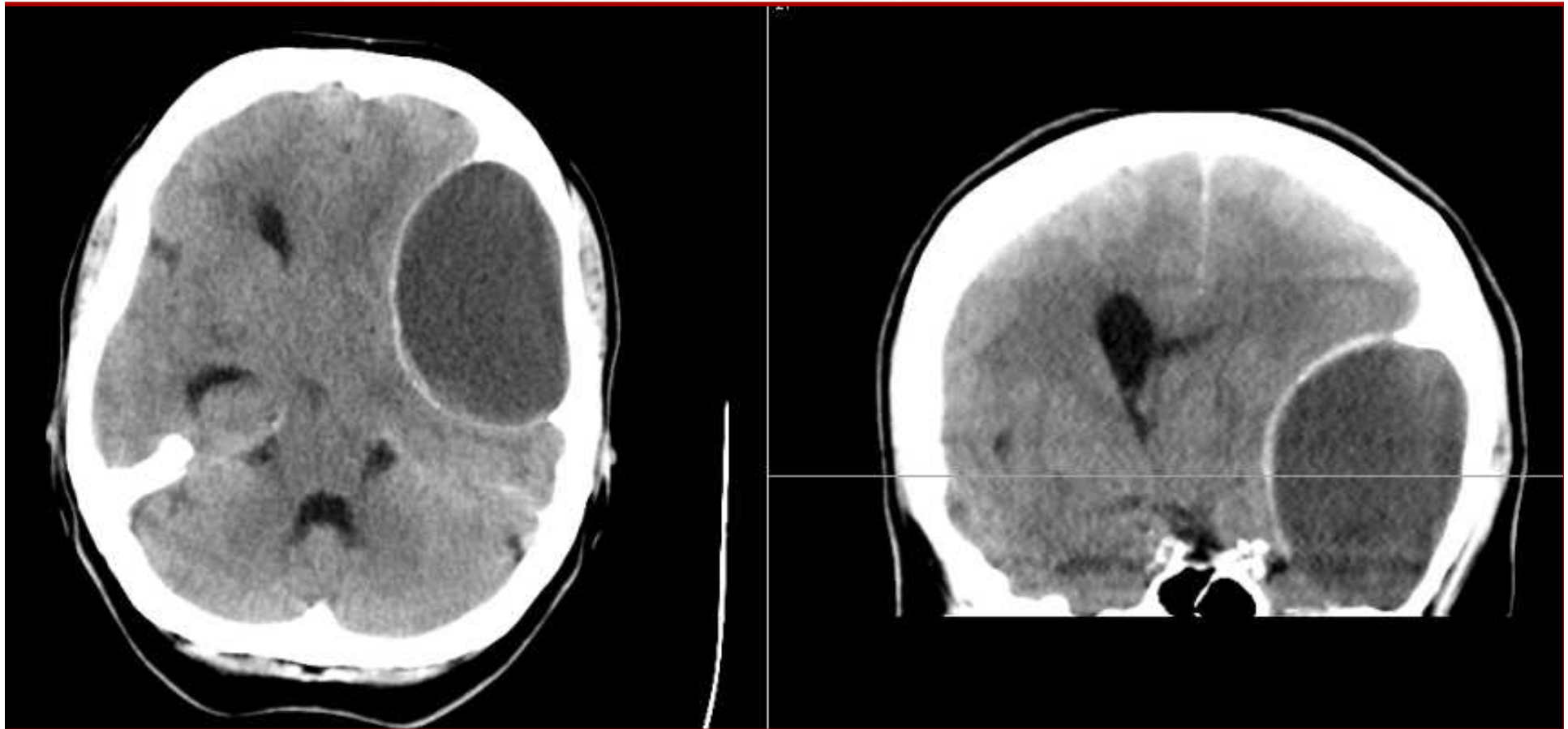




Nástražný systém



Chronický SDH s čerstvým zakrvácením



Epidurální hematom po 8 letech od úrazu



Zobrazovací
vyšetření

Popis
zobrazovacího
vyšetření

Anamnéza

Okolnosti
úrazu

Lokální nález



Komunikace

